

Tender No: IISER/PUR/0898/0899/0967/SJV/AME/AV/SC/25-26

तारीख/ Date: 23 Sep 2025

Index for Invitation for Tender (IFT) (E-Procurement mode only)

1. The Institute invites Two Cover Tenders from Class I and II local suppliers, as per DPIIT order No. P-45021/2/2017-PP (BE-II) dated 04 Jun 2020, for the following items through the eProcurement System of National Informatics Centre that enables the Tenderers to submit the bids online through Central Public Procurement Portal of Government of India (<https://eprocure.gov.in/eprocure/app>.)

क्रम सं./ SI. No	विवरण/ Description	Page No
1.	Supply, Installation and commissioning of laboratory furniture and fume hoods in labs CSB 2102, CSB 2103 and CSB 2101 at Chemical Science Block (CSB) (refer Annexure 7 Technical Specifications)	20 to 90

2. Annexures enclosed: Bidders should follow the annexures before submission of bid:-

1.	Annexure 1	Instructions To Bidder for Online Bid Submission
2.	Annexure 2	General Terms and conditions of Contract
3.	Annexure 3	Tender Acceptance Letter
4.	Annexure 4	Model bank guarantee format for EMD
5.	Annexure 5	Model bank guarantee format for performance security
6.	Annexure 6	Special conditions of tender
7.	Annexure 7	Technical specifications
8.	Annexure 8	Format for self-certification of local content
9.	Annexure 9	Declaration for not sharing land border with India
10.	Annexure 10	Certificate of not blacklisted
11.	Annexure 11	Checklist

3) All the correspondence in this regard should be done in favor of Deputy Registrar (Purchase & Stores), IISER Thiruvananthapuram referring the tender reference number. Email id – purchasestores@iisertvm.ac.in



Anwar Salath
24/9/25

A. 4) **ईएमडी/EMD: Rs. 1,14,000/- (Rupees One lakh fourteen thousand only)** स्टेट बैंक संग्रह द्वारा भुगतान करना चाहिए - निविदा संख्या और कंपनी का नाम उल्लेख किया जाना चाहिए। उद्धरण के साथ लेनदेन पर्ची / प्रिंट आउट या ईएमडी मूल्य के बराबर 90 दिनों की वैधता में बैंक गारंटी या बोलीदाता के उपक्रम जमा करना चाहिए।/ should be paid through State Bank Collect- Tender No & Company Name must be mentioned in the Remarks column. (<https://www.onlinesbi.com/sbicollect/icollecthome.htm> (State Bank Collect- Accept-Term and Conditions- Proceed-Select State **Kerala**-Select Type of Institution-**Educational Institution**- Select - **IISER Thiruvananthapuram**- Select Payment Category- **Stores and Purchase**) Quotes should accompany a copy of Transaction slip /Print out **OR** Bank guarantee equivalent **OR** Insurance Surety Bond to the EMD value with validity 90 days (should reach before tender due dates). EMD EXEMPTION: The bidder seeking EMD exemption, must submit the valid supporting document with the bid. Under MSE category, only manufacturers for goods and Service Providers for Services are eligible for exemption from EMD. Traders are excluded from the purview of this Policy.

5) Online Bid Submission: The documents to be uploaded in the e-procurement module, should be in two envelopes / covers.

6) Failure to upload the documents as per checklist will lead to rejection of bids.

7) Please quote only in Indian Rupees as per GFR 2017 amended Rule 161 (iv) and Public Procurement (Preference to make in India) order 2017, with your lowest rate and shortest delivery period as per the following terms. As per Govt of India, Ministry of Commerce and Industry, DPIIT order No. P-45021/2/2017-PP (BE-II) dated 16 Sep 2020 only Class I local Supplier (having minimum local content 50%) and Class II local supplier (having minimum local content 20% but less than 50%) are invited for this tender. Non-local supplier (having local content less than 20%) are not eligible to apply. Local Content means the amount of value added in India which shall, unless otherwise prescribed by the Nodal Ministry, be the total value of the item procured (excluding net domestic indirect taxes) minus the value of imported content in the item (including all customs duties). Class I local supplier / Class-II local supplier are required to indicate percentage of local content and provide self-certification that the item offered meets the local content requirement for 'Class-I local supplier' / 'Class-II local supplier', as the case may be. They shall also give details of the locations(s) at which the local value addition is made. Format for self-certification is given in **Annexure 8** of the tender document. Any non-compliance in this regard, the bid will not be considered in the category.

8. As per Ministry of Finance, Department of Expenditure order No. F.No./6/18/2019-PPD dated 23 Jul 2020 any bidder from a country which shares a land border with India will be eligible to bid in this tender only if the bidder is registered with the Department of Promotion of Industry and Internal Trade (DPIIT). Format for certificate for the same is given in **Annexure 9** of the tender document. 'Bidder' for the purpose of this order



Amor Zoloth
24/11/25

(including the term 'tenderer', 'consultant' 'vendor' or 'service provider' in certain contexts) means any person or firm or company, including any member of a consortium or joint venture (that is an association of several persons, or firms or companies), every artificial juridical person not falling in any of the descriptions of bidders stated hereinbefore, including any agency, branch or office controlled by such person, participating in a procurement process. Bidder from a country which shares a land boarded with India 'for the purpose of this order means:-

- i. An entity incorporated, established or registered in such a country; or
- ii. A subsidiary of an entity incorporated, established or registered in such a country; or
- iii. An entity substantially controlled through entities incorporated, established or registered in such a country; or
- iv. An entity whose beneficial owner is situated in such a country; or
- v. An Indian (or other) agent of such an entity; or
- vi. A natural person who is a citizen of such a country; or
- vii. A consortium or joint venture where any member of the consortium of joint venture falls under any of the above.

9.

<u>1st Envelope / Cover (Technical Bid)</u>		
SI No	Contents	Format
1.	Compliance sheet as per specifications	PDF
2.	Detailed brochures, data sheets, catalogues etc. supporting the compliance of specifications	PDF
3.	Clientele list and details of TWO major installations in India	PDF
4.	Any other document as mentioned in the specifications or essential as per bidder	PDF
5.	All commercial terms and conditions of the bid (except price)	PDF
6.	Tender Acceptance Letter, & EMD, Declaration as per Annexure 8,9,10 and Checklist	PDF
<u>2nd Envelope / Cover (Price Bid)</u>		
1.	Price bid: item-wise prices for the items mentioned in the Technical Bid (clearly mentioning the break Tax/ Duty / other charges etc.)	Excel (.xls)

10. Note: Please note being an Institute under Ministry of Education, Govt of India, the Institute will not entertain any type of advance payment for the equipment, AMC or any other services.

11. Detailed Specifications : Please refer Annexure 7.



Assistant Registrar (Purchase & Stores)

Invitation for Tender (E-Procurement mode only)

1	Work / Item Description	Supply, Installation and commissioning of laboratory furniture and fume hoods in labs CSB 2102, CSB 2103 and CSB 2101 at Chemical Science Block (CSB) (refer Annexure 7 Technical Specifications)
2	Quantity Required	As per the Annexure 7
3	Tender Type	Open
4	Tender Reference No	IISER/PUR/0898/0899/0967/SJV/AME/AV/SC/25-26
5	Number of covers (1/2/3/4)	2 (Technical and Financial)
6	Date of Issue/Publishing	23 Sep 2025
7	Document Download/Sale Start Date	23 Sep 2025 (1500 Hrs)
8	Document Download/Sale End Date	08 Oct 2025 (1500 Hrs)
9	Clarification End Date	30 Sep 2025 (1500 Hrs)
10	Last Date and Time for Uploading of Bids	08 Oct 2025 (1500 Hrs)
11	Date and Time of Opening of Technical Bids	09 Oct 2025 (1500 Hrs)
12	Date of Opening of Price Bid	will be intimated later
13	Tender Fee (INR)	Nil
14	EMD Amount (INR)	Rs. 1,14,000/- (Rupees One lakh ninety thousand only)
15	Detailed Specifications	As per annexure 7

1. Please note being an Institute under Ministry of Education, Govt of India, the Institute will not entertain any type of advance payment for the equipment, AMC or any other services.



Anurag Salath
24/9/25

Assistant Registrar (Purchase & Stores)

ANNEXUE: 1
Instructions for Online Bid Submission

- 1) The bidders are required to submit soft copies of their bids electronically on the CPP Portal, using valid Digital Signature Certificates. The instructions given below are meant to assist the bidders in registering on the CPP Portal, prepare their bids in accordance with the requirements and submitting their bids online on the CPP Portal.
- 2) More information useful for submitting online bids on the CPP Portal may be obtained at: <https://eprocure.gov.in/eprocure/app>.

REGISTRATION

- 1) Bidders are required to enroll on the e-Procurement module of the Central Public Procurement Portal (URL: <https://eprocure.gov.in/eprocure/app>) by clicking on the link "Online bidder Enrollment" on the CPP Portal which is free of charge.
- 2) As part of the enrolment process, the bidders will be required to choose a unique username and assign a password for their accounts.
- 3) Bidders are advised to register their valid email address and mobile numbers as part of the registration process. These would be used for any communication from the CPP Portal.
- 4) Upon enrolment, the bidders will be required to register their valid Digital Signature Certificate (Class III Certificates with signing key usage) issued by any Certifying Authority recognized by CCA India (e.g. Sify / nCode / eMudhra etc.), with their profile.
- 5) Only one valid DSC should be registered by a bidder. Please note that the bidders are responsible to ensure that they do not lend their DSC's to others which may lead to misuse.
- 6) Bidder then logs in to the site through the secured log-in by entering their user ID / password and the password of the DSC / e-Token.

SEARCHING FOR TENDER DOCUMENTS

- 1) There are various search options built in the CPP Portal, to facilitate bidders to search active tenders by several parameters. These parameters could include Tender ID, Organization Name, Location, Date, Value, etc. There is also an option of advanced search for tenders, wherein the bidders may combine a number of search parameters such as Organization Name, Form of Contract, Location, Date, Other keywords etc. to search for a tender published on the CPP Portal.
- 2) Once the bidders have selected the tenders they are interested in, they may download the required documents / tender schedules. These tenders can be moved to the respective 'My Tenders' folder. This would enable the CPP Portal to intimate the bidders through SMS / email in case there is any corrigendum issued to the tender document.
- 3) The bidder should make a note of the unique Tender ID assigned to each tender, in case they want to obtain any clarification / help from the Helpdesk.

PREPARATION OF BIDS

- 1) Bidder should take into account any corrigendum published on the tender document before submitting their bids.
- 2) Please go through the tender advertisement and the tender document carefully to understand the documents required to be submitted as part of the bid. Please note the number of covers in which the bid documents have to be submitted, the number of documents - including the names and content of each of the document that need to be submitted. Any deviations from these may lead to rejection of the bid.
- 3) Bidder, in advance, should get ready the bid documents to be submitted as indicated in the tender document / schedule and generally, they can be in PDF / XLS / RAR / DWG/JPG formats. Bid documents may be scanned with 100 dpi with black and white option which helps in reducing size of the scanned document.
- 4) To avoid the time and effort required in uploading the same set of standard documents which are required to be submitted as a part of every bid, a provision of uploading such standard documents (e.g. PAN card copy, annual reports, auditor certificates etc.) has been provided to the bidders. Bidders can use "My Space" or "Other Important Documents" area available to them to upload such documents. These documents may be directly submitted from the "My Space" area while submitting a bid, and need not be uploaded again and again. This will lead to a reduction in the time required for bid submission process.
Note: My Documents space is only a repository given to the Bidders to ease the uploading process. If Bidder has uploaded his Documents in My Documents space, this does not automatically ensure these Documents being part of Technical Bid.

SUBMISSION OF BIDS

- 1) Bidder should log into the site well in advance for bid submission so that they can upload the bid in time i.e. on or before the bid submission time. Bidder will be responsible for any delay due to other issues.
- 2) The bidder has to digitally sign and upload the required bid documents one by one as indicated in the tender document.
- 3) Bidder has to select the payment option as "offline" to pay the tender fee / EMD as applicable and enter details of the instrument.
- 4) Bidder should prepare the EMD as per the instructions specified in the tender document. The original should be posted/couriered/given in person to the concerned official, latest by the last date of bid submission or as specified in the tender documents. The details of the DD/any other accepted instrument, physically sent, should tally with the details available in the scanned copy and the data entered during bid submission time. Otherwise the uploaded bid will be rejected.
- 5) Bidders are requested to note that they should necessarily submit their financial bids in the format provided and no other format is acceptable. If the price bid has been given as a standard BoQ format with the tender document, then the same is to be downloaded and to be filled by all the bidders. Bidders are required to download the BoQ file, open it and complete the



white coloured (unprotected) cells with their respective financial quotes and other details (such as name of the bidder). No other cells should be changed. Once the details have been completed, the bidder should save it and submit it online, without changing the filename. If the BoQ file is found to be modified by the bidder, the bid will be rejected.

- 6) The server time (which is displayed on the bidders' dashboard) will be considered as the standard time for referencing the deadlines for submission of the bids by the bidders, opening of bids etc. The bidders should follow this time during bid submission.
- 7) All the documents being submitted by the bidders would be encrypted using PKI encryption techniques to ensure the secrecy of the data. The data entered cannot be viewed by unauthorized persons until the time of bid opening. The confidentiality of the bids is maintained using the secured Socket Layer 128 bit encryption technology. Data storage encryption of sensitive fields is done. Any bid document that is uploaded to the server is subjected to symmetric encryption using a system generated symmetric key. Further this key is subjected to asymmetric encryption using buyers/bid opener's public keys. Overall, the uploaded tender documents become readable only after the tender opening by the authorized bid openers.
- 8) The uploaded tender documents become readable only after the tender opening by the authorized bid openers.
- 9) Upon the successful and timely submission of bids (i.e. after Clicking "Freeze Bid Submission" in the portal), the portal will give a successful bid submission message & a bid summary will be displayed with the bid no. and the date & time of submission of the bid with all other relevant details.
- 10) The bid summary has to be printed and kept as an acknowledgement of the submission of the bid. This acknowledgement may be used as an entry pass for any bid opening meetings.

ASSISTANCE TO BIDDERS

- 1) Any queries relating to the tender document and the terms and conditions contained therein should be addressed to the Tender Inviting Authority for a tender or the relevant contact person indicated in the tender.
- 2) Any queries relating to the process of online bid submission or queries relating to CPP Portal in general may be directed to the 24x7 CPP Portal Helpdesk.

.....

The document 'Instructions To Bidder for Online Bid Submission' is downloadable from :
<https://eprocure.gov.in/eprocure/app?page=StandardBiddingDocuments&service=page>



Annexure: 2

GENERAL TERMS & CONDITIONS OF THE CONTRACT

TABLE OF CONTENTS

Sl.No.	Contents
2.1	Definitions
2.2	Contract Documents
2.3	Fraud and Corruption
2.4	Joint Venture, Consortium or Association
2.5	Scope of Supply
2.6	Suppliers' Responsibilities
2.7	Contract price
2.8	Copy Right
2.9	Application
2.10	Standards
2.11	Use of Contract Documents and Information
2.12	Patent Indemnity
2.13	Performance Security
2.14	Inspections and Tests
2.15	Packing
2.16	Delivery and Documents
2.17	Insurance
2.18	Transportation
2.19	Incidental Services
2.20	Spare Parts
2.21	Warranty
2.22	Terms of Payment
2.23	Change Orders and Contract Amendments
2.24	Assignment
2.25	Subcontracts
2.26	Extension of time
2.27	Penalty Clause
2.28	Termination for Default
2.29	Force Majeure
2.30	Termination for insolvency
2.31	Termination for Convenience
2.32	Settlement of Disputes
2.33	Governing Language
2.34	Applicable Law
2.35	Notice
2.36	Taxes and Duties
2.37	Right to use Defective Goods
2.38	Protection against Damage
2.39	Site preparation and installation

2.1 DEFINITIONS

2.1.1 The following words and expressions shall have the meanings hereby assigned to them:

- a) "Contract" means the Contract Agreement entered into between the Purchaser and the Supplier, together with the Contract Documents referred to therein, including all attachments, appendices, and all documents incorporated by reference therein.
- b) "Contract Documents" means the documents listed in the Contract Agreement, including any amendments thereto.
- c) "Contract Price" means the price payable to the Supplier as specified in the Contract Agreement, subject to such additions and adjustments thereto or deductions there from, as may be made pursuant to the Contract.
- d) "Day" means calendar day.
- e) "Completion" means the fulfilment of the Related Services by the Supplier in accordance with the terms and conditions set forth in the Contract.
- f) "GCC" means the General Conditions of Contract.
- g) "Goods" means all of the commodities, raw material, machinery and equipment, and/or other materials that the Supplier is required to supply to the Purchaser under the Contract.
- h) "Related Services" means the services incidental to the supply of the goods, such as transportation, insurance, installation, training and initial maintenance and other such obligations of the Supplier under the Contract.
- i) "SCC" means the Special Conditions of Contract.
- j) "Subcontractor" means any natural person, private or government entity, or a combination of the above, to whom any part of the Goods to be supplied or execution of any part of the Related Services is subcontracted by the Supplier.
- k) "Supplier" means the natural person, private or government entity, or a combination of the above, whose bid to perform the Contract has been accepted by the Purchaser and is named as such in the Contract Agreement.
- l) Indian Institute of Science Education and Research, Thiruvananthapuram (IISER-TVM) means a society registered under the Travancore Cochin Literary Scientific and Charitable Societies' Registration Act, 1995 (12 of 1955) on 20.02.2008 at Kerala at no. T.342/08.
- m) "The final destination," where applicable, means the place named in the SCC.

2.2 CONTRACT DOCUMENTS

2.2.1 Subject to the order of precedence set forth in the Contract Agreement, all documents forming the Contract (and all parts thereof) are intended to be correlative, complementary, and mutually explanatory. The Contract Agreement shall be read as a whole.

2.3 FRAUD AND CORRUPTION

2.3.1 The purchaser requires that bidders, suppliers, contractors and consultants, if any, observe the highest standard of ethics during the procurement and execution of such contracts. In pursuit of this policy,

- a) The terms set forth below are defined as follows:
 - i) "Corrupt practice" means the offering, giving, receiving, or soliciting, directly or indirectly, of anything of value to influence the action of a public official in the procurement process or in contract execution;



- ii) "Fraudulent practice" means a misrepresentation or omission of facts in order to influence a procurement process or the execution of a contract;
- iii) "Collusive practice" means a scheme or arrangement between two or more bidders, with or without the knowledge of the Borrower, designed to establish bid prices at artificial, noncompetitive levels; and
- iv) "Coercive practice" means harming or threatening to harm, directly or indirectly, persons or their property to influence their participation in the procurement process or affect the execution of a contract;
- b) the purchaser will reject a proposal for award if it determines that the Bidder recommended for award has, directly or through an agent, engaged in corrupt, fraudulent, collusive or coercive practices in competing for the Contract in question;

2.4 JOINT VENTURE, CONSORTIUM OR ASSOCIATION

- 2.4.1 If the Supplier is a joint venture, consortium, or association, all of the parties shall be jointly and severally liable to the Purchaser for the fulfilment of the provisions of the Contract and shall designate one party to act as a leader with authority to bind the joint venture, consortium, or association. The composition or the constitution of the joint venture, consortium, or association shall not be altered without the prior consent of the Purchaser.

2.5 SCOPE OF SUPPLY

- 2.5.1 The Goods and Related Services to be supplied shall be as specified in the Schedule of Requirements.

2.6 SUPPLIERS' RESPONSIBILITIES

- 2.6.1 The Supplier shall supply all the Goods and Related Services included in the Scope of Supply in accordance with Scope of Supply Clause of the GCC, and the Delivery and Completion Schedule, as per GCC Clause relating to delivery and document.

2.7 CONTRACT PRICE

- 2.7.1 Prices charged by the Supplier for the Goods supplied and the Related Services performed under the Contract shall not vary from the prices quoted by the Supplier in its bid.

2.8 COPYRIGHT

- 2.8.1 The copyright in all drawings, documents, and other materials containing data and information furnished to the Purchaser by the Supplier herein shall remain vested in the Supplier, or, if they are furnished to the Purchaser directly or through the Supplier by any third party, including suppliers of materials, the copyright in such materials shall remain vested in such third party.

2.9 APPLICATION

- 2.9.1 These General Conditions shall apply to the extent that they are not superseded by provisions in other parts of the Contract.

2.10 STANDARDS

- 2.10.1 The Goods supplied and services rendered under this Contract shall conform to the standards mentioned in the Technical Specifications and Schedule of Requirements, and, when no applicable standard is mentioned, to the authoritative standard appropriate to the Goods' country of origin and such standards shall be the latest issued by the concerned institution.

2.11 USE OF CONTRACT DOCUMENTS AND INFORMATION

- 2.11.1 The Supplier shall not, without the Purchaser's prior written consent, disclose the Contract, or any provision thereof, or any specification, plan, drawing, pattern, sample or information, furnished by or on behalf of the Purchaser in connection therewith, to any person other than a person employed by the Supplier in performance of the Contract.
Disclosure to any such employed person shall be made in confidence and shall extend only so far, as may be necessary for purposes of such performance.
- 2.11.2 The Supplier shall not, without the Purchaser's prior written consent, make use of any document or information enumerated above except for purposes of performing the Contract.
- 2.11.3 Any document, other than the Contract itself, enumerated above shall remain the property of the Purchaser and shall be returned (in all copies) to the Purchaser on completion of the Supplier's performance under the Contract if so required by the Purchaser.

2.12 PATENT INDEMNITY

- 2.12.1 The Supplier shall, subject to the Purchaser's compliance with GCC Sub-Clause 12.2, indemnify and hold harmless the Purchaser and its employees and officers from and against any and all suits, actions or administrative proceedings, claims, demands, losses, damages, costs, and expenses of any nature, including attorney's fees and expenses, which the Purchaser may suffer as a result of any infringement or alleged infringement of any patent, utility model, registered design, trademark, copyright, or other intellectual property right registered or otherwise existing at the date of the Contract by reason of:
- (a) the installation of the Goods by the Supplier or the use of the Goods in India; and
 - (b) the sale in any country of the products produced by the Goods.

- 2.12.2 If any proceedings are brought or any claim is made against the Purchaser, the Purchaser shall promptly give the Supplier a notice thereof, and the Supplier may at its own expense and in the Purchaser's name conduct such proceedings or claim and any negotiations for the settlement of any such proceedings or claims.

2.13 PERFORMANCE SECURITY

- 2.13.1 Within 21 days of receipt of the notification of award/PO, the Supplier shall furnish performance security in the amount specified in SCC, valid till 60 days after the warranty period. Alternatively, the PS may also be submitted at the time of release of final payment in cases where part payment is made against delivery & part on installation. The PS, where applicable, shall be submitted in advance for orders where full payment is to be made on Letter of Credit (LC) or on delivery. In this case, submission of PS at the time of negotiation of documents through Bank would be stipulated as a condition in the LC and the BS should be kept valid till such time the PS is submitted.

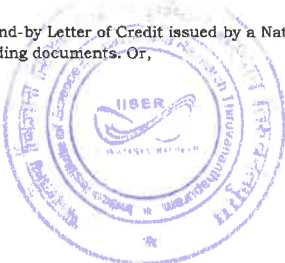
- 2.13.2 The proceeds of the performance security shall be payable to the Purchaser as compensation for any loss resulting from the Supplier's failure to complete its obligations under the Contract.

- 2.13.3 The Performance Security shall be denominated in Indian Rupees for the offers received for supplies within India and denominated in the currency of the contract in the case of offers received for supply from foreign countries.

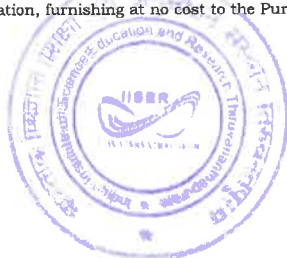
- 2.13.4 In the case of imports, the PS may be submitted either by the principal or by the Indian agent and, in the case of purchases from indigenous sources, the PS may be submitted by either the manufacturer or their authorized dealer/bidder.

- 2.13.5 The Performance security shall be in one of the following forms:

- (a) A Bank guarantee or stand-by Letter of Credit issued by a Nationalized/Scheduled bank located in India or a bank located abroad in the form provided in the bidding documents. Or,



- (b) A Banker's cheque or Account Payee demand draft in favour of the purchaser. Or,
 - (c) A Fixed Deposit Receipt pledged in favour of the Purchaser.
- 2.13.6 The performance security will be discharged by the Purchaser and returned to the Supplier not later than 60 days following the date of completion of the Supplier's performance obligations, including any warranty obligations, unless specified otherwise in SCC, without levy of any interest.
- 2.13.7 In the event of any contract amendment, the supplier shall, within 21 days of receipt of such amendment, furnish the amendment to the performance security, rendering the same valid for the duration of the contract, as amended for further period of 60 days thereafter.
- 2.13.8 The order confirmation should be received within 15 days from the date of notification of award. However, the Purchaser has the powers to extend the time frame for submission of order confirmation and submission of Performance Security (PS). Even after extension of time, if the order confirmation /PS are not received, the contract shall be cancelled and limited tenders irrespective of the value would be invited from the responding firms after forfeiting the bid security of the defaulting firm, where applicable provided there is no change in specifications. In such cases the defaulting firm would not be considered again for re-tendering in the particular case.
- 2.14. INSPECTIONS AND TESTS**
- 2.14.1 The Supplier shall at its own expense and at no cost to the Purchaser carry out all such tests and/or inspections of the Goods and Related Services as are specified in the SCC or as discussed and agreed to during the course of finalization of contract.
- 2.14.2 The Purchaser or its representative shall have the right to inspect and/or to test the Goods to confirm their conformity to the Contract specifications at no extra cost to the Purchaser. The Technical Specifications and SCC shall specify what inspections and tests the Purchaser requires and where they are to be conducted. The Purchaser shall notify the Supplier in writing in a timely manner of the identity of any representatives retained for these purposes
- 2.14.3 The inspections and tests may be conducted on the premises of the Supplier or its subcontractor(s), at the point of delivery and/or at the Goods final destination. If conducted on the premises of the Supplier or its subcontractor(s), all reasonable facilities and assistance, including access to drawings and production data - shall be furnished to the inspectors at no charge to the Purchaser.
- 2.14.4 Whenever the Supplier is ready to carry out any such test and inspection, it shall give a reasonable advance notice, including the place and time, to the Purchaser. The Supplier shall obtain from any relevant third party or manufacturer any necessary permission or consent to enable the Purchaser or its designated representative to attend the test and/or inspection
- 2.14.5 Should any inspected or tested Goods fail to conform to the specifications, the Purchaser may reject the goods and the Supplier shall either replace the rejected Goods or make alterations necessary to meet specification requirements free of cost to the Purchaser.
- 2.14.6 The Purchaser's right to inspect, test and, where necessary, reject the Goods after the Goods' arrival at final destination shall in no way be limited or waived by reason of the Goods having previously been inspected, tested and passed by the Purchaser or its representative prior to the Goods shipment.
- 2.14.7 The Supplier shall provide the Purchaser with a report of the results of any such test and/or inspection.
- 2.14.8 With a view to ensure that claims on insurance companies, if any, are lodged in time, the bidders and /or the Indian agent shall be responsible for follow up with their principals for ascertaining the dispatch details and informing the same to the Purchaser and he shall also liaise with the Purchaser to ascertain the arrival of the consignment after clearance so that immediately thereafter in his presence the consignment could be opened and the insurance claim be lodged, if required, without any loss of time. Any delay on the part of the bidder/Indian Agent would be viewed seriously and he shall be directly responsible for any loss sustained by the purchaser on the event of the delay.
- 2.15. PACKING**
- 2.15.1 The Supplier shall provide such packing of the Goods as is required to prevent their damage or deterioration during transit to their final destination as indicated in the Contract. The packing shall be sufficient to withstand, without limitation, rough handling during transit and exposure to extreme temperatures, salt and precipitation during transit and open storage. Packing case size and weights shall take into consideration, where appropriate, the remoteness of the Goods' final destination and the absence of heavy handling facilities at all points in transit.
- 2.15.2 The packing, marking and documentation within and outside the packages shall comply strictly with such special requirements as shall be provided for in the Contract including additional requirements, if any, specified in SCC and in any subsequent instructions ordered by the Purchaser
- 2.16. DELIVERY AND DOCUMENTS**
- 2.16.1 Delivery of the Goods and completion and related services shall be made by the Supplier in accordance with the terms specified by the Purchaser in the contract. The details of shipping and/or other documents to be furnished by the supplier are specified in SCC.
- 2.16.2 The terms FOB, FCA, CIF, CIP etc shall be governed by the rules prescribed in the current edition of the Incoterms published by the International Chambers of Commerce, Paris.
- 2.16.3 The mode of transportation shall be as specified in SCC
- 2.17. INSURANCE**
- 2.17.1 Should the purchaser elect to buy on CIF/CIP basis, the Goods supplied under the Contract shall be fully insured in Indian Rupees against any loss or damage incidental to manufacture or acquisition, transportation, storage and delivery in the manner specified in SCC.
- 2.17.2 Where delivery of the goods is required by the purchaser on CIF or CIP basis the supplier shall arrange and pay for Cargo Insurance, naming the purchaser as beneficiary and initiate & pursue claims till settlement, on the event of any loss or damage.
- 2.17.3 Where delivery is on FOB or FCA basis, insurance would be the responsibility of the purchaser.
- 2.17.4 With a view to ensure that claims on insurance companies, if any, are lodged in time, the bidders and /or the Indian agent shall be responsible for follow up with their principals for ascertaining the dispatch details and informing the same to the Purchaser and he shall also liaise with the Purchaser to ascertain the arrival of the consignment after clearance so that immediately thereafter in his presence the consignment could be opened and the insurance claim be lodged, if required, without any loss of time. Any delay on the part of the bidder/Indian Agent would be viewed seriously and he shall be directly responsible for any loss sustained by the purchaser on the event of the delay.
- 2.18. TRANSPORTATION**
- 2.18.1 Where the Supplier is required under the Contract to deliver the Goods FOB, transport of the Goods, up to and including the point of putting the Goods on board the vessel at the specified port of loading, shall be arranged and paid for by the Supplier, and the cost thereof shall be included in the Contract price. Where the Supplier is required under the Contract to deliver the Goods FCA, transport of the Goods and delivery into the custody of the carrier at the place named by the Purchaser or other agreed point shall be arranged and paid for by the Supplier, and the cost thereof shall be included in the Contract price.
- 2.18.2 Where the Supplier is required under the Contract to deliver the Goods CIF or CIP, transport of the Goods to the port of destination or such other named place of destination in the Purchaser's country, as shall be specified in the Contract, shall be arranged and paid for by the Supplier, and the cost thereof shall be included in the Contract Price.
- 2.18.3 In the case of supplies from within India, where the Supplier is required under the Contract to transport the Goods to a specified destination in India, defined as the Final Destination, transport to such destination, including insurance and storage, as specified in the Contract, shall be arranged by the Supplier, and the related costs shall be included in the Contract Price.
- 2.19. INCIDENTAL SERVICES**
- 2.19.1 The supplier may be required to provide any or all of the services, if any, specified in SCC
- 2.20. SPARE PARTS**
- 2.20.1 The Supplier shall be required to provide any or all of the following materials, notifications, and information pertaining to spare parts manufactured or distributed by the Supplier:
 - (a) Such spare parts as the Purchaser may elect to purchase from the Supplier, providing that this election shall not relieve the Supplier of any warranty obligations under the Contract; and
 - (b) In the event of termination of production of the spare parts:
 - (i) Advance notification to the Purchaser of the pending termination, in sufficient time to permit the Purchaser to procure needed requirements; and
 - (ii) Following such termination, furnishing at no cost to the Purchaser, the blueprints, drawings and specifications of the spare parts, if requested.
- 2.21. WARRANTY**



- 2.21.1 The Supplier warrants that all the Goods are new, unused, and of the most recent or current models, and that they incorporate all recent improvements in design and materials, unless provided otherwise in the Contract.
- 2.21.2 The Supplier further warrants that the Goods shall be free from defects arising from any act or omission of the Supplier or arising from design, materials, and workmanship, under normal use in the conditions prevailing in India.
- 2.21.3 Unless otherwise specified in the SCC, the warranty shall remain valid for twelve (12) months after the Goods, or any portion thereof as the case may be, have been delivered to and accepted at the final destination indicated in the SCC, or for eighteen (18) months after the date of shipment from the port or place of loading in the country of origin, whichever period concludes earlier.
- 2.21.4 The Purchaser shall give notice to the Supplier stating the nature of any such defects together with all available evidence thereof, promptly following the discovery thereof.
- 2.21.5 The Purchaser shall afford all reasonable opportunity for the Supplier to inspect such defects.
- 2.21.6 Upon receipt of such notice, the Supplier shall, within a reasonable period of time, expeditiously repair or replace the defective Goods or parts thereof, at no cost to the Purchaser.
- 2.21.7 If having been notified, the Supplier fails to remedy the defect within the reasonable period of time; the Purchaser may proceed to take within a reasonable period such remedial action as may be necessary, at the Supplier's risk and expense and without prejudice to any other rights which the Purchaser may have against the Supplier under the Contract.
- 2.21.7 Goods requiring warranty replacements must be replaced on free of cost basis to the purchaser.
- 2.22 TERMS OF PAYMENT**
- 2.22.1 The method and conditions of payment to be made to the Supplier under this Contract shall be as specified in the SCC.
- 2.22.2 The Supplier's request(s) for payment shall be made to the Purchaser in writing, accompanied by an invoice describing, as appropriate, the Goods delivered and the Services performed, and by documents, submitted pursuant to Delivery and document Clause of the GCC and upon fulfillment of other obligations stipulated in the contract.
- 2.22.3 Payments shall be made promptly by the Purchaser but in no case later than thirty (30) days after submission of the invoice or claim by the Supplier.
- 2.22.4 Payment shall be made in currency as indicated in the contract.
- 2.23 CHANGE ORDERS AND CONTRACT AMENDMENTS.**
- 2.23.1 The Purchaser may at any time, by written order given to the Supplier pursuant to Clause on Notices of the GCC make changes within the general scope of the Contract in any one or more of the following:
- (a) Drawings, designs, or specifications, where Goods to be furnished under the Contract are to be specifically manufactured for the Purchaser;
 - (b) The method of shipping or packing;
 - (c) The place of delivery; and/or
 - (d) The Services to be provided by the Supplier.
 - (e) The delivery schedule.
- 2.23.2 If any such change causes an increase or decrease in the cost of, or the time required for, the Supplier's performance of any provisions under the Contract, an equitable adjustment shall be made in the Contract Price or delivery schedule, or both, and the Contract shall accordingly be amended. Any claims by the Supplier for adjustment under this clause must be asserted within fifteen (15) days from the date of the Supplier's receipt of the Purchaser's change order.
- 2.23.3 No variation or modification in the terms of the contract shall be made except by written amendment signed by the parties.
- 2.24 ASSIGNMENT**
- 2.24.1 The Supplier shall not assign, in whole or in part, its obligations to perform under the Contract, except with the Purchaser's prior written consent.
- 2.25 SUBCONTRACTS**
- 2.25.1 The Supplier shall notify the Purchaser in writing of all subcontracts awarded under this Contract if not already specified in the bid. Such notification, in the original bid or later, shall not relieve the Supplier from any liability or duties or obligation under the Contract.
- 2.26 EXTENSION OF TIME.**
- 2.26.1 Delivery of the Goods and performance of the Services shall be made by the Supplier in accordance with the time schedule specified by the Purchaser.
- 2.26.2 If at any time during performance of the Contract, the Supplier or its sub-contractor(s) should encounter conditions impeding timely delivery of the Goods and performance of Services, the Supplier shall promptly notify the Purchaser in writing of the fact of the delay, its likely duration and its cause(s). As soon as practicable after receipt of the Supplier's notice, the Purchaser shall evaluate the situation and may, at its discretion, extend the Supplier's time for performance with or without penalty, in which case the extension shall be ratified by the parties by amendment of the Contract.
- 2.26.3 Except as provided under the Force Majeure clause of the GCC, a delay by the Supplier in performance of its delivery obligations shall render the Supplier liable to the imposition of penalty pursuant to Penalty Clause of the GCC unless an extension of time is agreed upon pursuant to above clause without the application of penalty clause.
- 2.27 PENALTY CLAUSE**
- 2.27.1 Subject to GCC Clause on Force Majeure, if the Supplier fails to deliver any or all of the Goods or to perform the Services within the period(s) specified in the Contract, the Purchaser shall, without prejudice to its other remedies under the Contract, deduct from the Contract Price, as penalty, a sum equivalent to the percentage specified in SCC of the delivered price of the delayed Goods or unperformed Services or contract value for each week or part thereof of delay until actual delivery or performance, up to a maximum deduction of the Percentage specified in SCC. Once the maximum is reached, the Purchaser may consider termination of the Contract pursuant to GCC. Clause on Termination for Default. The SCC shall also indicate the basis for ascertaining the value on which the penalty shall be applicable
- 2.28. TERMINATION FOR DEFAULT**
- 2.28.1 The Purchaser may, without prejudice to any other remedy for breach of contract, by written notice of default sent to the Supplier, terminate the Contract in whole or part
- (a) If the Supplier fails to deliver any or all of the Goods within the period(s) specified in the contract, or within any extension thereof granted by the Purchaser pursuant to GCC Clause on Extension of Time; or
 - (b) If the Supplier fails to perform any other obligation(s) under the Contract.
 - (c) If the Supplier, in the judgment of the Purchaser has engaged in corrupt or fraudulent or collusive or coercive practices as defined in GCC Clause on Fraud or Corruption in competing for or in executing the Contract.
- 2.28.2 In the event the purchaser terminates the contract in whole or in part, he may take recourse to any one or more of the following action:
- (a) The Performance Security is to be forfeited;
 - (b) The purchaser may procure, upon such terms and in such manner as it deems appropriate, stores similar to those undelivered, and the supplier shall be liable for all available actions against it in terms of the contract.
 - (c) However, the supplier shall continue to perform the contract to the extent not terminated.
- 2.29 FORCE MAJEURE**
- 2.29.1 Notwithstanding the provisions of GCC Clauses relating to extension of time, penalty and Termination for Default the Supplier shall not be liable for forfeiture of its performance security, liquidated damages or termination for default, if and to the extent that, its delay in performance or other failure to perform its obligations under the Contract is the result of an event of Force Majeure.
- 2.29.2 For purposes of this Clause, "Force Majeure" means an event or situation beyond the control of the Supplier that is not foreseeable, is unavoidable, and its origin is not due to negligence or lack of care on the part of the Supplier. Such events may include, but not be limited to, acts of the Purchaser in its sovereign capacity, wars or revolutions, fires, floods, epidemics, quarantine restrictions, and freight embargoes.
- 2.29.3 If a Force Majeure situation arises, the Supplier shall promptly notify the Purchaser in writing of such conditions and the cause thereof within 21 days of its occurrence. Unless otherwise directed by the Purchaser in writing, the Supplier shall continue to perform its obligations under the Contract as far as is reasonably practical, and shall seek all reasonable alternative means for performance not prevented by the Force Majeure event.
- 2.29.4 If the performance in whole or in part or any obligations under the contract is prevented or delayed by any reason of force majeure for a period exceeding 60 days, either party may at its option terminate the contract without any financial repercussions on either side.
- 2.30 TERMINATION FOR INSOLVENCY**
- 2.30.1 The Purchaser may at any time terminate the Contract by giving written notice to the Supplier, if the Supplier becomes bankrupt or otherwise insolvent. In this event, termination will be without compensation to the Supplier, provided that such termination will not prejudice or affect any right of action or remedy, which has accrued or will accrue thereafter to the Purchaser.
- 2.31 TERMINATION FOR CONVENIENCE**
- 2.31.1 The Purchaser, by written notice sent to the Supplier, may terminate the Contract, in whole or in part, at any time. The notice of termination shall specify that termination is for the Purchaser's convenience, the extent to which performance of the Supplier under the Contract is terminated, and the date upon which such termination becomes effective.
- 2.31.2 The Goods those are complete and ready for shipment within 30 days after the Supplier's receipt of notice of termination shall be accepted by the Purchaser at the Contract terms and prices. For the remaining Goods, the Purchaser may elect:
- (a) To have any portion completed and delivered at the Contract terms and prices; and/or
 - (b) To cancel the remainder and pay to the Supplier an agreed amount for partially completed Goods and for materials and parts previously procured by the Supplier.



- 2.32 SETTLEMENT OF DISPUTES**
- 2.32.1 The Purchaser and the supplier shall make every effort to resolve amicably by direct informal negotiation any disagreement or dispute arising between them under or in connection with the Contract.
- 2.32.2 If, after twenty-one (21) days, the parties have failed to resolve their dispute or difference by such mutual consultation, then either the Purchaser or the Supplier may give notice to the other party of its intention to commence arbitration, as hereinafter provided, as to the matter in dispute, and no arbitration in respect of this matter may be commenced unless such notice is given. Any dispute or difference in respect of which a notice of intention to commence arbitration has been given in accordance with this Clause shall be finally settled by arbitration. Arbitration may be commenced prior to or after delivery of the Goods under the Contract.
- 2.32.3 The dispute settlement mechanism/arbitration proceedings shall be concluded as under:
- (a) In case of Dispute or difference arising between the Purchaser and a domestic supplier relating to any matter arising out of or connected with this agreement, such disputes or difference shall be settled in accordance with the Indian Arbitration & Conciliation Act, 1996, the rules there under and any statutory modifications or re-enactments thereof shall apply to the arbitration proceedings. The dispute shall be referred to the Chairman, Board of Governors of IISER TVM and if he is unable or unwilling to act, to the sole arbitration of some other person appointed by him willing to act as such Arbitrator. The award of the arbitrator so appointed shall be final, conclusive and binding on all parties to this order.
 - (b) In the case of a dispute between the purchaser and a Foreign Supplier, the dispute shall be settled by arbitration In accordance with provision of sub-clause (a) above. But if this is not acceptable to the supplier then the dispute shall be settled in accordance with provisions of UNCITRAL (United Nations Commission on International Trade Law) Arbitration Rules.
- 2.32.4 The venue of the arbitration shall be the place from where the purchase order or contract is issued.
- 2.32.5 Notwithstanding any reference to arbitration herein,
- (a) the parties shall continue to perform their respective obligations under the Contract unless they otherwise agree; and
 - (b) the Purchaser shall pay the Supplier any monies due the Supplier.
- 2.33 GOVERNING LANGUAGE**
- 2.33.1 The contract shall be written in English language which shall govern its interpretation. All correspondence and other documents pertaining to the Contract, which are exchanged by the parties, shall be written in the English language only.
- 2.34 APPLICABLE LAW**
- 2.34.1 The Contract shall be interpreted in accordance with the laws of the Union of India and all disputes shall be subject to place of jurisdiction as specified in SCC.
- 2.35 NOTICES**
- 2.35.1 Any notice given by one party to the other pursuant to this contract/order shall be sent to the other party in writing or by cable, telex, FAX, e-mail or and confirmed in writing to the other party's address specified in the SCC.
- 2.35.2 A notice shall be effective when delivered or on the notice's effective date, whichever is later.
- 2.36 TAXES AND DUTIES**
- 2.36.1 For goods manufactured outside India, the Supplier shall be entirely responsible for all taxes, stamp duties, license fees, and other such levies imposed outside India.
- 2.36.2 For goods Manufactured within India, the Supplier shall be entirely responsible for all taxes, duties, license fees, etc., incurred till its final manufacture/production.
- 2.36.3 If any tax exemptions, reductions, allowances or privileges may be available to the Supplier in India, the Purchaser shall make its best efforts to enable the Supplier to benefit from any such tax savings to the maximum allowable extent.
- 2.37 RIGHT TO USE DEFECTIVE GOODS**
- 2.37.1 If after delivery, acceptance and installation and within the guarantee and warranty period, the operation or use of the goods proves to be unsatisfactory, the Purchaser shall have the right to continue to operate or use such goods until rectifications of defects, errors or omissions by repair or by partial or complete replacement is made without interfering with the Purchaser's operation.
- 2.38 PROTECTION AGAINST DAMAGE**
- 2.38.1 The system shall not be prone to damage during power failures and trip outs.
- The normal voltage and frequency conditions available at site as under:
- (a) Voltage 230 volts – Single phase/ 415 V 3 phase (+_ 10%)
 - (b) Frequency 50 Hz.
- 2.39. SITE PREPARATION AND INSTALLATION**
- The Purchaser is solely responsible for the construction of the equipment sites in compliance with the technical and environmental specifications defined by the Supplier. The Purchaser will designate the installation sites before the scheduled installation date to allow the Supplier to perform a site inspection to verify the appropriateness of the sites before the installation of the Equipment, if required. The supplier shall inform the purchaser about the site preparation, if any, needed for installation, of the goods at the purchasers' site immediately after notification of award/contract.



Anwar Sadath
29/9/25
ASSISTANT REGISTRAR
[PURCHASE & STORES]
IISERTVM

ANNEXURE: 3
TENDER ACCEPTANCE LETTER (To be given on Company Letter Head)

To, Date:
The Director, Indian Institute of Science Education and Research – Thiruvananthapuram,
Maruthamala P.O, Vithura, Thiruvananthapuram, Kerala -695551, India.

Sub: Acceptance of Terms & Conditions of Tender.

Tender Reference No: _____

Name of Tender / Work: - _____

Dear Sir,

1. I / We have downloaded / obtained the tender document(s) for the above mentioned 'Tender/Work' from the web site(s) namely: _____ as per your advertisement, given in the above mentioned website(s).
2. I / We hereby certify that I / we have read the entire terms and conditions of the tender documents from Page No. _____ to _____ (including all documents like annexure(s), schedule(s), etc .), which form part of the contract agreement and I / we shall abide hereby by the terms / conditions / clauses contained therein.
3. The corrigendum(s) issued from time to time by your department/ organization too have also been taken into consideration, while submitting this acceptance letter.
4. I / We hereby unconditionally accept the tender conditions of above mentioned tender document(s) / corrigendum(s) in its totality / entirety.
5. I / We do hereby declare that our Firm has not been blacklisted/ debarred by any Govt. Department/Public sector undertaking.
6. I / We certify that all information furnished by the our Firm is true & correct and in the event that the information is found to be incorrect/untrue or found violated, then your department/ organization shall without giving any notice or reason therefore or summarily reject the bid or terminate the contract, without giving any notice or reason therefore or summarily reject the bid or terminate the contract, without prejudice to any other rights or remedy including the forfeiture of the full said earnest money deposit absolutely.
7. I / We declare the following information provided are correct to the best of my knowledge:

1.	Name and Address of the bidder	
2.	Manufacturer / Dealer / Agent	
3.	Contact Person	
4.	Phone	
5.	Email	
6.	Mobile Number	
7.	GST No	
8.	PAN No	
9.	UTR No / DU No (in case of online transfer of Tender Fee) (if any)	
10.	UTR No / DU No (in case of online transfer of EMD)	
11.	Warranty, if any	
12.	Delivery period	
13.	Payment terms	
14.	PO to be placed in favour of	
15.	Local content category(Class I/II/III)	

Yours Faithfully,



(Signature of the Bidder, with Official Seal)

Annexure 4

MODEL BANK GUARANTEE FORMAT FOR FURNISHING BID SECURITY (BS)

Whereas (hereinafter called the "tenderer")
has submitted their offer dated.....for the supply of.....
..... (hereinafter called the
"tender") against the Purchaser's tender enquiry No.....
.....KNOW ALL MEN by these presents that WE.....
.....of having our registered office at.....
.....are bound unto (hereinafter called the "Purchaser") in
the sum offor which
payment will and truly to be made to the said Purchaser, the Bank binds itself, its
successors and assigns by these presents. Sealed with the Common Seal of the
said Bank this..... day of20.....

THE CONDITIONS OF THIS OBLIGATION ARE:

- 1) If the tenderer withdraws or amends, impairs or derogates from the tender in any respect within the period of validity of this tender.
- 2) If the tenderer having been notified of the acceptance of his tender by the Purchaser during the period of its validity:-
 - a) If the tenderer fails to furnish the performance security for the due performance of the contract.
 - b) Fails or refuses to accept/execute the contract.

We undertake to pay the Purchaser up to the above amount upon receipt of its first written demand, without the purchaser (IISER-TVM) having to substantiate its demand, provided that in its demand the purchaser will note that the amount claimed by it is due to it owing the occurrence of one or both the two conditions, specifying the occurred condition or conditions. This guarantee will remain in force up to and including 45 days after the period of tender validity and any demand in respect thereof should reach the bank not later than the above date.

Signature of the authorized officer of the bank

Name and designation of the officer

Seal, name and address of the Bank and address of the Branch.



Annexure 5

SPECIMEN

**PERFORMANCE SECURITY FORM
MODEL BANK GUARANTEE FORMAT FOR PERFORMANCE SECURITY**

To,

WHEREAS

(name and address of the supplier) (hereinafter called "the supplier") has undertaken, in pursuance of contract no. dated to supply (.....description of goods and services) (herein after called "the contract").

AND WHEREAS it has been stipulated by you in the said contract that the supplier shall furnish you with a bank guarantee by a scheduled commercial bank recognized by you for the sum specified therein as security for compliance with its obligations in accordance with the contract;

AND WHEREAS we have agreed to give the supplier such a bank guarantee;

NOW THEREFORE we hereby affirm that we are guarantors and responsible to you, on behalf of the supplier, up to a total of (amount of the guarantee in words and figures), and we undertake to pay you, upon your first written demand declaring the supplier to be in default under the contract and without cavil or argument, any sum or sums within the limits of (amount of guarantee) as aforesaid, without your needing to prove or to show grounds or reasons for your demand or the sum specified therein.

We hereby waive the necessity of your demanding the said debt from the supplier before presenting us with the demand.

We further agree that no change or addition to or other modification of the terms of the contract to be performed there under or of any of the contract documents which may be made between you and the supplier shall in any way release us from any liability under this guarantee and we hereby waive notice of any such change, addition or modification.

This guarantee shall be valid until the day of 20.....

(Signature of the authorized officer of the Bank)

.....
Name and designation of the officer

.....
Seal, name & address of the Bank and address of the Branch



Annexure 6: SPECIAL CONDITIONS OF CONTRACT

1.1. ELIGIBLE BIDDERS.

1.1.1 This Invitation for Bids is open to all suppliers.

1.1.2 Bidders should not be associated, or have been associated in the past, directly or indirectly, with a firm or any of its affiliates which have been engaged by the Purchaser to provide consulting services for the preparation of the design, specifications, and other documents to be used for the procurement of the goods to be purchased under this Invitation of Bids.

1.2. COST OF BIDDING

1.2.1 The Bidder shall bear all costs associated with the preparation and submission of its bid, and "the Purchaser", will in no case be responsible or liable for these costs, regardless of the conduct or outcome of the bidding process.

1.3. FRAUD AND CORRUPTION:

1.3.1 The purchaser requires that the bidders/suppliers and contractors observe the highest standard of ethics during the procurement and execution of such contracts.

1.3.2 The purchaser will reject a proposal for award if it determines that the Bidder recommended for award has, directly or through an agent, engaged in corrupt, fraudulent, collusive or coercive practices in competing for the Contract in question;
The Bidding Documents

1.4. COST OF BIDDING DOCUMENTS

1.4.1 Interested eligible bidders may download the document from our Website.

1.5. CONTENT OF BIDDING DOCUMENTS

1.5.1 The goods required, bidding procedures and contract terms are prescribed in the bidding documents which should be read in conjunction.

1.5.2 The Bidder is expected to examine all instructions, forms, terms, and specifications in the bidding documents. **Failure to furnish all information required by the bidding documents or submission of a bid not substantially responsive to the bidding documents in every respect will be at the Bidder's risk and may result in rejection of its bid.**

1.6. CLARIFICATION OF BIDDING DOCUMENTS

1.6.1 A prospective Bidder requiring any clarification of the Bidding Documents shall contact the Purchaser in writing via fax/email. The Purchaser will respond in writing to any request for clarification, provided that such request is received not later than ten (10) days prior to the deadline for submission of bids. The Purchaser shall forward copies of its response to all those who have acquired the Bidding Documents directly from it, including a description of the inquiry but without identifying its source. Should the Purchaser deem it necessary to amend the Bidding Documents as a result of a clarification, it shall do so following the procedure under clause relating to amendment of Bidding documents and Clause relating to Deadline for Submission of Bids. The clarifications and amendments issued would also be hosted on the website of the purchaser for the benefit of the other prospective bidders.

1.7. AMENDMENT OF BIDDING DOCUMENTS

1.7.1 At any time prior to the deadline for submission of bids, the Purchaser may, for any reason, whether at its own initiative or in response to a clarification requested by a prospective bidder, modify the bidding documents by amendment.

1.7.2 All prospective bidders who have received the bidding documents will be notified of the amendment in writing or by e-mail and will be binding on them. The same would also be hosted on the website of the purchaser and all prospective bidders are expected to surf the website before submitting their bids to take cognizance of the amendments.

1.7.3 In order to allow prospective bidders reasonable time to take the amendment into account, while in preparing their bids, the Purchaser, at its discretion, may extend the deadline for the submission of bids and host the changes on the website of the purchaser.

1.7.4 In case of any amendment to the bid, it will be done at least 7 days before due date and will be published in website. Bidders are required to keep this in view before submission. Normally extension of due date will not be entertained. However in special cases if due date is extended, it will be notified under the same tender notice before 3 days of due date.

PREPARATION OF BIDS

1.8. LANGUAGE OF BID

1.8.1 The bid prepared by the Bidder, as well as all correspondence and documents relating to the bid exchanged by the Bidder and the Purchaser, shall be written in English language only especially when the details are technical.

However of GOI makes it mandatory under Rajbhasha Abhniyam in that case views of Rajbhasha unit of IISER-TVM may be sought.

1.8.2 The Supplier shall bear all costs of translation, if any, to the English language and all risks of the accuracy of such translation, for documents provided by the Supplier.

1.9. DOCUMENTS COMPRISING THE BID

1.9.1 The bid prepared by the Bidder shall include:



- a) Bidder Information
- b) Bid security declaration as specified in the Invitation to Bids.
- c) Service support details
- d) Deviation Statement if any.
- e) Performance Statement.
- f) Manufacturer's Authorization.
- g) Documentary evidence establishing that the bidder is eligible to bid and is qualified to perform the contract if its bid is accepted.
- h) Bid form.
- i) Documents establishing goods eligibility and conformity to bidding documents.
- j) Applicable Price Schedule Form.
- k) DGS&D Registration certificate in case the items under procurement falls under the restricted category of the current export-import policy of the Govt. of India.

1.10. BID FORM AND PRICE SCHEDULE

1.10.1 The bidder shall complete the Bid with the appropriate price schedule.

1.11. BID PRICES

1.11.1 The Bidder shall indicate on the appropriate price schedule, the unit prices and total bid prices of the goods it proposes to supply under the contract.

1.11.2 Prices indicated on the price-schedule form shall be entered separately in the following manner:

(A) FOR GOODS MANUFACTURED WITHIN INDIA

(i) The price of the goods quoted Ex-works including taxes already paid.

(ii) VAT and other taxes like excise duty etc [shall be shown extra] which will be payable on the goods if the contract is awarded.

a. The charges for inland transportation, insurance and other local services required for delivering the goods at the desired destination as specified in the price schedule.

b. The installation, commissioning and training charges including any incidental services, if any.

(B) FOR GOODS MANUFACTURED ABROAD

Bidders are required to show break-up of Ex-works [which should include packing and handling charges], FOB/FCA and CIF/CIP price in the quotation. IISERTVM has a mechanism for consolidation and customs clearance. The consolidators will be nominated for this purpose at the time of awarding the contract if desires so.

(i) The price of the goods, quoted on FCA (named place of delivery abroad) or FOB (named port of shipment), as specified in the price schedule.

(ii) The charges for insurance and transportation of the goods to the port/place of destination.

(iii) The agency commission charges should be shown, if any.

(iv) The installation, commissioning and training charges including any incidental services, if any

1.11.3 **The terms FOB, FCA, CIF, CIP etc shall be governed by the rules prescribed in the current edition of the Incoterms published by the International Chambers of Commerce, Paris.**

1.11.4 Where there is no mention of packing, forwarding, freight, insurance charges, taxes etc. such offer shall be rejected as incomplete.

1.11.5 The price quoted shall remain fixed during the contract period and shall not vary on any account

1.11.6 All lots and items must be listed and priced separately in the Price Schedules. If a Price Schedule shows items listed but not priced their prices shall be assumed to be included in the prices of other items. Lots or items not listed in the Price Schedule shall be assumed to be not included in the bid.

1.11.7 **Taxes & Duties: At actuals. The purchases made by the purchaser for scientific purpose are exempt from Custom Duty under notification 51/96.**

1.12. BID CURRENCIES

1.12.1 Prices shall be quoted in Indian Rupees for offers received for supply within India and in freely convertible foreign currency in case of offers received for supply from foreign countries.

1.13. DOCUMENTS ESTABLISHING BIDDER'S ELIGIBILITY AND QUALIFICATIONS

1.13.1 The bidder shall furnish, as part of its bid, documents establishing the bidders' eligibility to bid and its qualification to perform the contract if its bid is accepted.

1.13.2 The documentary evidence of the bidders qualification to perform the contract if the bid is accepted shall establish to the purchasers satisfaction that;

(a) The bidder meets the qualification criteria listed in bidding documents, if any.

(b) Bidder that doesn't manufacture the goods it offers to supply shall submit to Manufacturers' Authorization Form (MAF) to demonstrate that it has been duly authorized by the manufacturer of the goods to quote and/or supply the goods.

(c) In case a bidder not doing business within India, it shall furnish the certificate to the effect that the bidder is or will be represented by an agent in India equipped and able to carry out the supply, maintenance, repair obligations etc. during the warranty and post warranty period or ensure a mechanism at place for carrying out the supply, maintenance, repair obligations etc. during the warranty and post-warranty period.

1.13.3 Conditional tenders shall not be accepted

1.14. DOCUMENTS ESTABLISHING GOODS' ELIGIBILITY AND CONFORMITY TO BIDDING DOCUMENTS

1.14.1 To establish the goods' eligibility, the documentary evidence of the goods and services eligibility shall consist of a statement on the country of origin of the goods and services offered which shall be confirmed by a certificate of origin at the time of shipment.



- 1.14.2 To establish the conformity of the goods and services to the specifications and schedule of requirements of the bidding document, the documentary evidence of conformity of the goods and services to the bidding documents may be in the form of literature, drawings and data, and shall consist of:
 (a) A detailed description of the essential technical and performance characteristics of the goods;
 (b) A list giving full particulars, including available sources and current prices, of spare parts, special tools, etc., necessary for the proper and continuing functioning of the goods during the warranty period following commencement of the use of the goods by the Purchaser in the Priced bid; and
 (c) An item-by-item commentary on the Purchaser's Technical Specifications demonstrating substantial responsiveness of the goods and services to those specifications or a statement of deviations and exceptions to the provisions of the Technical Specifications.
- 1.14.3 For purposes of the commentary to be furnished pursuant to above, the Bidder shall note that standards for workmanship, material and equipment, designated by the Purchaser in its Technical Specifications are intended to be descriptive only and not restrictive. The Bidder may substitute these in its bid, provided that it demonstrates to the Purchaser's satisfaction that the substitutions ensure substantial equivalence to those designated in the Technical Specifications.
- 1.15. BID SECURITY**
- 1.15.1 The Bidder shall furnish, as part of its bid, a bid security (BS) for an amount as specified in the Invitation for Bids. In the case of foreign bidders, the BS shall be submitted either by the principal or by the Indian agent and in the case of indigenous bidders; the BS shall be submitted by the manufacturer or their specifically authorized dealer/bidder.
- 1.15.2 The bid security shall be in Indian Rupees for offers received for supply within India and denominated in the currency of the bid or in any freely convertible foreign exchange in the case of offers received for supplies from foreign countries in equivalent Indian Rupees. The bid security shall be in one of the following forms at the bidders' option:
 (a) A bank guarantee issued by a Nationalized/Scheduled bank/Foreign Bank operating in India in the form provided in the bidding documents and valid for 45 days beyond the validity of the bid. In case a bidder desires to submit a BG issued from a foreign bank, then the same should be confirmed by a Nationalized/Scheduled Indian bank; or
 (b) Fixed Deposit receipt pledged in favour of the IISER-TVM.
 (c) A Banker's cheque or demand draft in favour of IISERTVM issued by any Nationalised/Scheduled Indian bank.
- 1.15.3 The bid security shall be payable promptly upon written demand by the purchaser in case the conditions listed in the ITB clause 15.11 are invoked.
- 1.15.4 The bid security should be submitted in its original form. Copies shall not be accepted.
- 1.15.5 While Bid security (EMD) is a requirement, the Director IISER-TVM may grant exemption of Bid security to some specific parties having sound credentials and are of national/international repute.
- 1.15.6 The bid security of unsuccessful bidder will be discharged /returned as promptly as possible positively within a period of 15 days after the expiration of the period of bid validity or placement of order whichever is later, without any interest.
- 1.15.7 The successful Bidder's bid security will be discharged upon the Bidder furnishing the performance security, without any interest. Alternatively, the BS could also be adjusted against PS, if it is paid through DD/BC.
- 1.15.8 **The firms registered with DGS&D, NSIC if any, are exempted from payment of bid security (BS) provided such registration includes the item they are offering which are manufactured by them and not for selling products manufactured by other companies.**
- 1.15.9 In case a bidder intimates at the time of tender opening in writing that the bid security is kept inside the financial bid, then in such cases, the technical bid of the party would be accepted provisionally till opening of the financial bids with which the party has attached the bid security.
- 1.15.10 The bid security may be forfeited:
 (a) If a Bidder withdraws or amends or impairs or derogates its bid during the period of bid validity specified by the Bidder on the Bid Form; or
 (b) **In case of a successful Bidder, if the Bidder fails to furnish order acceptance within 15 days of the order or fails to sign the contract and/or fails to furnish Performance Security within 21 days from the date of contract/ order.**
- 1.16. PERIOD OF VALIDITY OF BIDS**
- 1.16.1 Bids shall remain valid for minimum of 90 days after the date of bid opening prescribed by the Purchaser. **A bid valid for a shorter period shall be rejected by the Purchaser as non-responsive.**
- 1.16.2 In exceptional circumstances, the Purchaser may solicit the Bidder's consent to an extension of the period of validity. The request and the responses thereto shall be made in writing (or by cable, telex, fax or e-mail). The bid security provided shall also be suitably extended. A Bidder may refuse the request without forfeiting its bid security. A Bidder granting the request will not be required nor permitted to modify its bid.
- 1.16.3 Bid evaluation will be based on the bid prices without taking into consideration the above corrections.
- 1.17. CONFIDENTIALITY**
- 1.17.1 Information relating to the examination, evaluation, comparison, and post qualification of bids, and recommendation of contract award, shall not be disclosed to bidders or any other persons not officially concerned with such process until publication of the Contract Award.



- 1.17.2 Any effort by a Bidder to influence the Purchaser in the examination, evaluation, comparison, and post qualification of the bids or contract award decisions may result in the rejection of its Bid.
- 1.18. CLARIFICATION OF BIDS**
- 1.18.1 To assist in the examination, evaluation, comparison and post qualification of the bids, the Purchaser may, at its discretion, ask the Bidder for a clarification of its bid. The request for clarification and the response shall be in writing and no change in prices or substance of the bid shall be sought, offered or permitted. However, no negotiation shall be held except with the lowest bidder, at the discretion of the purchaser. Any clarification submitted by a bidder in respect to its bid which is not in response to a request by the purchaser shall not be considered.
- 1.19. CONVERSION TO SINGLE CURRENCY**
- 1.19.1 To facilitate evaluation and comparison, the Purchaser will convert all bid prices expressed in the amounts in various currencies in which the bid prices are payable to Indian Rupees at the selling exchange rate established by any bank in India on the date of bid opening in the case of single part bidding and the rates prevalent on the date of opening of the Priced bids in the case of two-part bidding. For this purpose, exchange rate notified in www.xe.com or www.rbi.org or any other website could also be used by the purchaser.
- 1.20. CONTACTING THE PURCHASER**
- 1.20.1 Subject to ITB Clause 1.24, no Bidder shall contact the Purchaser on any matter relating to its bid, from the time of the bid opening to the time the Contract is awarded.
- 1.20.2 Any effort by a Bidder to influence the Purchaser in its decisions on bid evaluation, bid comparison or contract award may result in rejection of the Bidder's bid.
- 1.21. POST QUALIFICATION**
- 1.21.1 In the absence of pre-qualification, the Purchaser will determine to its satisfaction whether the Bidder that is selected as having submitted the lowest evaluated responsive bid is qualified to perform the contract satisfactorily, in accordance with the criteria listed in ITB Clause 13.
- 1.21.2 The determination will take into account the eligibility criteria listed in the bidding documents and will be based upon an examination of the documentary evidence of the Bidder's qualifications submitted by the Bidder, as well as such other information as the Purchaser deems necessary and appropriate.
- 1.21.3 An affirmative determination will be a prerequisite for award of the contract to the Bidder.
- A negative determination will result in rejection of the Bidder's bid.
- 1.22. PURCHASER'S RIGHT TO ACCEPT ANY BID AND TO REJECT ANY OR ALL BIDS**
- 1.22.1 The Purchaser reserves the right to accept or reject any bid, and to annul the bidding process and reject all bids at any time prior to award of Contract, without thereby incurring any liability to the affected Bidder or Bidders.
- 1.23. WARRANTY**
- 1.23.1 The Supplier warrants that all the Goods are new, unused, and of the most recent or current models, and that they incorporate all recent improvements in design and materials, unless provided otherwise in the Contract.
- 1.23.2 The Supplier further warrants that the Goods shall be free from defects arising from any act or omission of the Supplier or arising from design, materials, and workmanship, under normal use in the conditions prevailing in India.
- 1.23.3 Unless otherwise specified, the warranty shall remain valid for twelve (12) months after the Goods, or any portion thereof as the case may be, have been delivered to and accepted at the final destination indicated, or for eighteen (18) months after the date of shipment from the port or place of loading in the country of origin, whichever period concludes earlier.
- 1.23.4 The Purchaser shall give notice to the Supplier stating the nature of any such defects together with all available evidence thereof, promptly following the discovery thereof.
- The Purchaser shall afford all reasonable opportunity for the Supplier to inspect such defects.
- 1.23.5 Upon receipt of such notice, the Supplier shall, within a reasonable period of time, expeditiously repair or replace the defective Goods or parts thereof, at no cost to the Purchaser.
- 1.23.6 If having been notified, the Supplier fails to remedy the defect within the reasonable period of time; the Purchaser may proceed to take within a reasonable period such remedial action as may be necessary, at the Supplier's risk and expense and without prejudice to any other rights which the Purchaser may have against the Supplier under the Contract.
- 1.23.7 Goods requiring warranty replacements must be replaced on free of cost basis to the purchaser.
- 1.23.8 **Performance Guarantee:**
The successful bidder is required to submit a performance Guarantee of 3% of Purchase Order value valid during warranty period, plus two months grace period.
- 1.24. PENALTY CLAUSE**
- 1.24.1 Subject to GCC Clause on Force Majeure, if the Supplier fails to deliver any or all of the Goods or to perform the Services within the period(s) specified in the Contract, the Purchaser shall, without prejudice to its other remedies under the Contract, deduct from the Contract Price, as penalty, a sum equivalent to the percentage specified in contract of the delivered price of the delayed Goods or unperformed Services or contract value for each week or part thereof of delay until actual delivery or performance, up to a maximum deduction of the Percentage specified in contract. Once the maximum is reached, the Purchaser may consider termination of the Contract pursuant to GCC. Clause on Termination for Default. The SCC shall also indicate the basis for ascertaining the value on which the penalty shall be applicable.
- 1.25. INSURANCE**



- 1.25.1 Should the purchaser elect to buy on CIF/CIP basis, the Goods supplied under the Contract shall be fully insured in Indian Rupees against any loss or damage incidental to manufacture or acquisition, transportation, storage and delivery in the manner specified in contract.
- 1.25.2 Where delivery of the goods is required by the purchaser on CIF or CIP basis the supplier shall arrange and pay for Cargo Insurance, naming the purchaser as beneficiary and initiate & pursue claims till settlement, on the event of any loss or damage.
- 1.25.3 Where delivery is on FOB or FCA basis, insurance would be the responsibility of the purchaser.
- 1.25.4 With a view to ensure that claims on insurance companies, if any, are lodged in time, the bidders and /or the Indian agent shall be responsible for follow up with their principals for ascertaining the dispatch details and informing the same to the Purchaser and he shall also liaise with the Purchaser to ascertain the arrival of the consignment after clearance so that immediately thereafter in his presence the consignment could be opened and the insurance claim be lodged, if required, without any loss of time. Any delay on the part of the bidder/Indian Agent would be viewed seriously and he shall be directly responsible for any loss sustained by the purchaser on the event of the delay.
- 1.26 TRANSPORTATION**
- 1.26.1 Where the Supplier is required under the Contract to deliver the Goods FOB, transport of the Goods, up to and including the point of putting the Goods on board the vessel at the specified port of loading, shall be arranged and paid for by the Supplier, and the cost thereof shall be included in the Contract price. Where the Supplier is required under the Contract to deliver the Goods FCA, transport of the Goods and delivery into the custody of the carrier at the place named by the Purchaser or other agreed point shall be arranged and paid for by the Supplier, and the cost thereof shall be included in the Contract price.
- 1.26.2 Where the Supplier is required under the Contract to deliver the Goods CIF or CIP, transport of the Goods to the port of destination or such other named place of destination in the Purchaser's country, as shall be specified in the Contract, shall be arranged and paid for by the Supplier, and the cost thereof shall be included in the Contract Price.
- 1.26.3 In the case of supplies from within India, where the Supplier is required under the Contract to transport the Goods to a specified destination in India, defined as the Final Destination, transport to such destination, including insurance and storage, as specified in the Contract, shall be arranged by the Supplier, and the related costs shall be included in the Contract Price.
- 1.27 PACKING**
- Should be as per standards prescribed for international trade and movement of the goods.
- 1.38 STANDARDS**
- The Goods supplied and services rendered under this Contract shall conform to the standards mentioned in the Technical Specifications and Schedule of Requirements, and, when no applicable standard is mentioned, to the authoritative standard appropriate to the Goods' country of origin and such standards shall be the latest issued by the concerned institution.
- 1.39 PERFORMANCE SECURITY**
- 1.39.1 Within 21 days of receipt of the notification of award/PO, the Supplier shall furnish performance security of 3% of Contract/ Purchase Order value in the amount specified in the Contract, valid till 60 days beyond the completion of contractual obligations.
- 1.39.2 The proceeds of the performance security shall be payable to the Purchaser as compensation for any loss resulting from the Supplier's failure to complete its obligations under the Contract.
- 1.39.3 The Performance Security shall be denominated in Indian Rupees for the offers received for supplies within India and denominated in the currency of the contract in the case of offers received for supply from foreign countries.
- 1.39.4 In the case of imports, the PS may be submitted either by the principal or by the Indian agent and, in the case of purchases from indigenous sources, the PS may be submitted by either the manufacturer or their authorized dealer/bidder.
- 1.39.5 The Performance security shall be in one of the following forms:
- (d) A Bank guarantee or stand-by Letter of Credit issued by a Nationalized/Scheduled bank located in India or a bank located abroad in the form provided in the bidding documents. Or,
- (e) A Banker's cheque or Account Payee demand draft in favour of the purchaser. Or,
- (f) A Fixed Deposit Receipt pledged in favour of the Purchaser.
- 1.40 DELIVERY SCHEDULE :** Delivery schedule should be specified clearly
- 1.41 PAYMENT TERMS**
- For Indigenous supplies payment will be made within 30 days from the date of supply, installation & commissioning and on submission of Performance Bank Guarantee for 3% of Purchase Order value which should be valid during warranty period. However the advance payment to the vendors is not encouraged.**



Anwar Sadiq
24/9/25
Assistant Registrar (Purchase & Stores)

Annexure 7

Technical Specification and Additional T&C for this tender

INDIAN INSTITUTE OF SCIENCE EDUCATION AND RESEARCH
THIRUVANANTHAPURAM (IISER TVM)
(An Autonomous Institute under MHRD, Govt. of India)



TECHNICAL SPECIFICATIONS

Common Research Lab

Furniture and Equipment

Amun Zollet
21/9/25



SECTION 1: Requirements

For the LAB 2101 (refer Section 2):

1. Wall Bench (WB - 1) Size: L 7150 mm x W 750 mm x H 900 mm

- C-Frame Structure in 60 x 30 x 2 mm thick hollow pipe construction
- Work top in 18 ± 1 mm thick White Nano-Glass (grade 7) construction
- L 750 mm x W 500 mm x H 700±50 mm storage module with one drawer two shutters - 6 Nos.
- Knee space - 4 Nos.
- Worktop mounted electrical raceway in GI/CRCA powder coated construction
- 6/16 Amp electrical sockets and 16 Amp one way switch – 16 Nos.
- Filler Panel in GI construction - 2 Nos.

Quantity: 1 Nos

2. ISLAND Bench (IB - 1 to 3) Size: L 3525 mm x W 1300 mm x H 900 mm

- C-Frame Structure in 60 x 30 x 2 mm thick hollow pipe construction
- Work top in 18 ± 1 mm thick White Nano-Glass (grade 7) construction
- L 750 mm x W 500 mm x H 700±50 mm storage module with two shutters - 1 Nos.
- L 500 mm x W 500 mm x H 700±50 mm storage module with one drawer one shutter - 6 Nos.
- Single piece moulded PP sink (L 600 x W 450 x D 315 mm) - 1 Nos.
- Worktop mounted three way water tap with swan neck spout - 1 Nos.
- PP Adjustable Pegboard with 46 nos. PP Pegs. (Size: 600 x 600 mm) - 1 Nos.
- Worktop mounted, double outlet eye wash with SS braided flexible hose - 1 Nos.
- Knee space - 4 Nos.
- Double sided double tier reagent rack with electrical raceway
- 6/16 Amp electrical sockets and 16 Amp one way switch - 16 Nos.
- Close Panel in G. I. Construction - 2 Nos.
- Filler Panel in G.I. Construction - 2 Nos.

Quantity: 3 Nos.

3. Constant Bypass type Bench Fume Hood, for Non - AC Labs (Size: L 1800 x D 915 x H 2300 mm) consisting of following (As specified in Section 5):



Amar Sadash
24/9/25

- Fume Hood Superstructure
- Fume Hood Worktop
- Service Valves
- Electrical Fittings
- Controls
- Fume Hood Understructure
- Fume Hood Under-Cabinet (Chemical Storage Purpose)
- Accessories

Quantity: 2 Nos.

4. Exhaust Fan (PP) - one fan for 2 Nos. 1800 mm wide Fume Hoods

- Single piece moulded UV treated chemical resistant SISW direct driven centrifugal fan in PP construction with suitable stand in MS powder coated construction, CFM 1900 to 2300
- Corrosive resistant PP impeller with extra strength, high efficiency, properties which produces lower noise and power consumption.
- Drive - 5 HP, 2800 RPM, 415V, 50Hz., TEFC Class B insulation Induction motor with IP55 enclosure, in Non- FLP const.
- 16A, 3Ph MCB for Fan - Legrand or eq. Make
- Electrical Panel with necessary internals and VFD for fan.

Quantity: 1 Nos.

5. Supply of Exhaust ducting in PP + FRP (Round Shape) construction (3+2mm)

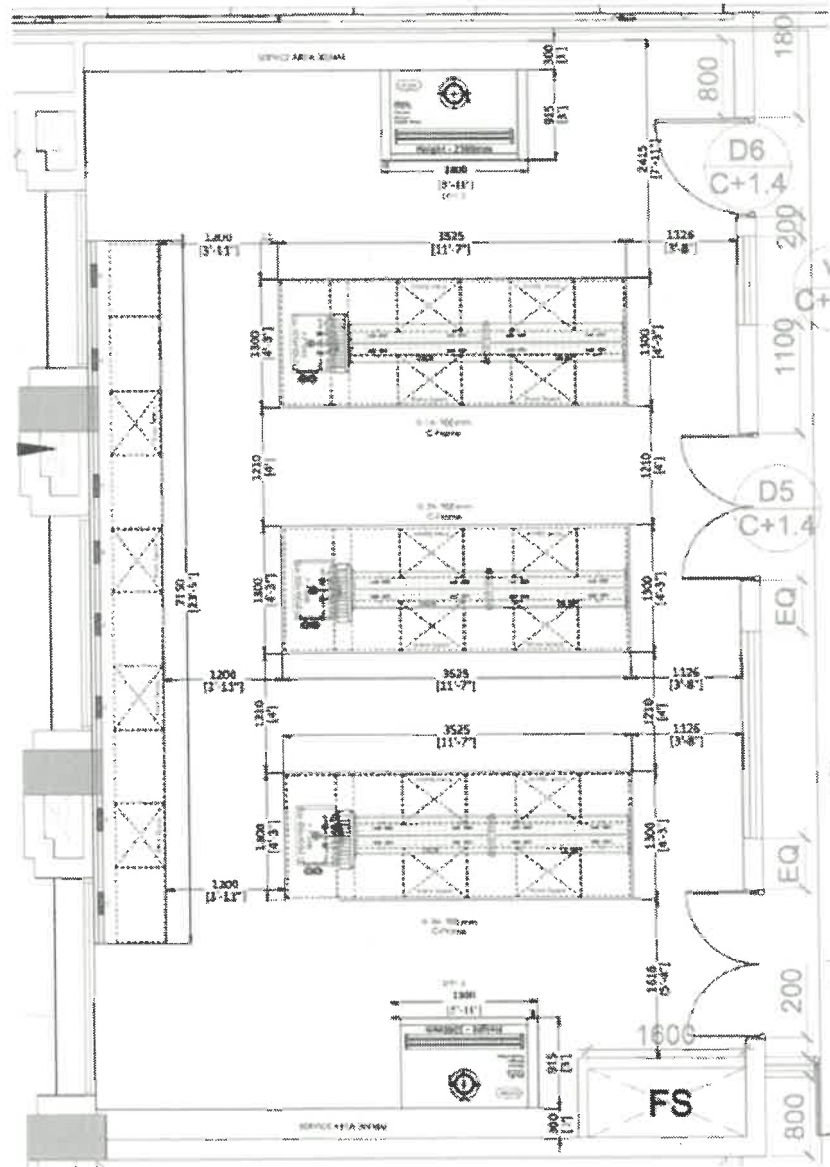
- Exhaust ducting in PP + FRP (Round Shape) construction (3mm + 2mm) complete with necessary bends, reducers, T-connections, supports, flanges, gaskets, nut-bolts etc.
- Amount for ducting work shall be payable as per actual measurement.

Quantity: 37 Sq. m

Amar Salath
24/9/25



SECTION 2: Plans



Amr Salath
24/9/25



SECTION 5: FUME HOOD SPECIFICATIONS

Sr. No.	DESCRIPTION		Qty (Nos.)
1	Type of Hood: Constant Bypass type Bench Fume Hood		
2	Overall Dimension: Width 1800 x Depth 915 x Height 2300 mm		
3	Inner Dimension: Width 1600 x Depth 645 x Height 1200 mm		
4	<p>Fume Hood Superstructure consisting of:</p> <ul style="list-style-type: none">- Structure frame in 2.0 mm thick GI construction- Inner lining, rear baffles and top baffles in 6 mm thk. Phenolic resin construction- Outer panels in 1.2 mm thick GI construction.- Aerodynamic Shape front posts, in GI construction- Flip-on type Airfoil in 1.6 mm thick SS construction- Streamlined shaped exhaust duct collar in PP const.- Combination type, frameless design sash in toughened glass const. with full length sash handle in anodized Al const.- Sash movement mechanism with counter weight.- Twin LED tube type light with fittings		1
5	<p>Fume Hood Worktop</p> <p>In telephone black natural granite construction, having raised rails on all four sides, with 1 No. oval shaped cup sink, in PP const., on left rear side.</p>		1
6	<p>Service Valves</p> <p>Having body in forged brass const., extended spindle in Aluminum construction, color coded knobs in plastic const. angular shaped serrated nozzles, in epoxy coated forged brass const. 1.5mt. long flexible tubing with end fittings for following services:</p>		
7	Services	Tube Construction	
8	Compressed Air	PU-4	1
9	Vacuum	SS braided Teflon Hose	1
10	Nitrogen	PU-4	1
11	Potable Water	Nylon braided PVC Hose	1
12	Electrical Services with internal wiring (all in non-FLP const.)		
13	Controller for Blower & light (Touch Pad)		1
14	16A, 2 Pole MCB - Legrand or eq. Make		1
15	5/15A 3-pin Socket with switch/ MCB - Legrand or eq. Make		4



Anurag Sarda
24/1/25

16	Controls Air velocity Monitor with low air alarm, Model AFA/1000 TEL - UK Make	1
17	Fume Hood Understructure Fabricated out of heavy gauge rectangular shape hollow pipes in MS construction, duly finished with corrosion resistant specialty coatings.	1
18	Fume Hood Under-Cabinet (Chemical Storage Purpose) Detachable design Chemical purpose twin cabinets fabricated out of GI sheet, consisting of: - Special arrangement for air ventilation inside the cabinet - Twin doors in double wall const. - Flushed type recessed handle. - Heavy duty knuckle-barrier special design door hinges. - 1 No. removable shelf. - Recessed base frame in heavy duty GI const. - FRP Lining inside the chemical storage cabinet - PP Tray for chemical storage - Twin castors for easy removal of the cabinet.	1
19	Accessories	
20	300 mm dia. Duct damper in PP const. complete with pre drilled flanges on both sides, manual operation handle and extended spindle, suitable for motorized drive.	1
21	Scaffold Grill (1630 x 750 mm) in Vertical rod design, fabricated out of 12.0 mm dia.	1
22	Epoxy rods, having 150mm pitch between two rods.	1 Set



Anwar Sadeeth
24/9/25

SECTION 6: Compliance Sheet

(A) Technical requirements

SL#	Item / Specification	RESPONSE (Yes/No)
1	Wall Bench (WB-1) — Size: L 7150 mm x W 750 mm x H 900 mm (1 Nos.)	
2	C-Frame structure: 60 x 30 x 2 mm hollow pipe	
3	Worktop: 18 ± 1 mm white Nano glass (G7 grade)	
4	L 750 mm x W 500 mm x H 700±50 mm storage module: one drawer + two shutters (3 Nos.)	
5	Knee space (4 Nos.)	
6	Worktop-mounted electrical raceway: GI powder coated	
7	6/16 A electrical sockets and 16 A one-way switch (16 Nos.)	
8	Filler panel: GI construction (2 Nos.)	
9	Constant Bypass Type Bench Fume Hood (Non-AC) — Size: L 1800 x D 915 x H 2300 mm (2 Nos.)	
10	Conform Specifications and quantities in Annexure I	
11	Superstructure: Phenolic resin panels & LED light	
12	Worktop: Black granite construction	
13	Service valves: as per Annexure	
14	Electrical fittings	
15	Controls	
16	Understructure	
17	Under-cabinet: chemical storage	
18	Accessories	
19	Exhaust Fan (PP) — Serves 2 Fume Hoods (1800 mm) (1 Nos.)	
20	Fan: Single-piece moulded UV-treated chemical-resistant SISW direct driven centrifugal, PP construction, stand in MS powder-coated, CFM 1900–2300	
21	Impeller: Corrosion-resistant PP, high efficiency, low noise/power consumption	
22	Drive: 5 HP, 2800 RPM, 415V, 50Hz, TEFC Class B, IP55 enclosure, Non-FLP	
23	Protection: 16A, 3-Phase MCB for fan (Legrand or equivalent)	
24	Electrical panel with necessary internals and VFD for fan	
25	Island Bench (IB-1 to 3) — Size: L 3525 mm x W 1300 mm x H 900 mm (3 Nos.)	



Anwar Zaidi
24/9/25

INDIAN INSTITUTE OF SCIENCE EDUCATION AND RESEARCH
THIRUVANANTHAPURAM (IISER TVM)
(An Autonomous Institute under MHRD, Govt. of India)



TECHNICAL SPECIFICATIONS

Dr. Sreejith Jayasree Varma's Lab

Furniture and Equipment

Anurag Sathya
24/9/25



SECTION 1: Requirements

For the LAB 2102 C (Biolab 1, refer Section 2 Plans 1 & 2):

1. Wall Bench (WB - 1) Size: L 2900 mm x W 750 mm x H 900 mm

- C-Frame Structure in 60 x 30 x 2 mm thick hollow pipe construction
- Work top in 18 ± 1 mm thick White Nano-Glass (grade 7) construction
- L 750 mm x W 500 mm x H 700±50 mm storage module with one drawer two shutters 3 Nos.
- Knee space 1 Nos.
- Worktop mounted electrical raceway in GI/CRCA powder coated construction
- 6/16 Amp electrical sockets and 16 Amp one way switch – 10 Nos.
- Filler Panel in GI construction - 2 Nos.

Quantity: 1 Nos

2. Wall Bench (WB - 2) Size: L 4550 mm x W 750 mm x H 900 mm

- C-Frame Structure in 60 x 30 x 2 mm thick hollow pipe construction
- Work top in 18 ± 1 mm thick White Nano-Glass (grade 7) construction
- L 750 mm x W 500 mm x H 700±50 mm storage module with one drawer two shutters - 4 Nos.
- Knee space - 1 Nos.
- Worktop mounted electrical raceway in GI/CRCA powder coated construction
- 6/16 Amp electrical sockets and 16 Amp one way switch - 12 Nos.
- Close Panel in G. I. Construction - 1 Nos.
- Filler Panel in GI construction - 2 Nos.

Quantity: 1 Nos

3. Over Head Cabinet (OHC) Size: L 1000 mm x D 450 mm x H 700 mm (MOC: GI Const.)

- 1000 mm wide storage module with two shutter

Quantity: 2 Nos

For the LAB 2102 B (Biolab 2, refer Section 2 Plans 1 & 3):

4. Wall Bench (WB - 3) Size: L 4550 mm x W 750 mm x H 900 mm



Amun Sadath
24/9/25

- C-Frame Structure in 60 x 30 x 2 mm thick hollow pipe construction
- Work top in 18 ± 1 mm thick White Nano-Glass (grade 7) construction
- L 750 mm x W 500 mm x H 700±50 mm storage module with one drawer two shutters - 3 Nos.
- L 750 mm x W 500 mm x H 700±50 mm storage module with two shutters - 1 Nos.
- Single piece folded PP sink (L 600 x W 450 x D 315 mm) - 1 Nos.
- Worktop mounted three way water tap with swan neck spout - 1 Nos.
- PP Adjustable Pegboard with 46 nos. PP Pegs. (Size: 600 x 600 mm) - 1 Nos.
- Worktop mounted, double outlet eye wash with SS braided flexible hose - 1 Nos.
- Knee space - 1 Nos.
- Worktop mounted electrical raceway in GI/CRCA powder coated construction
- 6/16 Amp electrical sockets and 16 Amp one way switch - 10 Nos.
- Close Panel in G. I. Construction - 1 Nos.
- Granite support structure - 1 Nos.
- Filler Panel in GI construction - 2 Nos.

Quantity: 1 Nos

5. Wall Bench (WB - 4) Size: L 3000 mm x W 750 mm x H 900 mm

- C-Frame Structure in 60 x 30 x 2 mm thick hollow pipe construction
- Work top in 18 ± 1 mm thick White Nano-Glass (grade 7) construction
- L 750 mm x W 500 mm x H 700±50 mm storage module with one drawer two shutters - 3 Nos.
- Knee space - 1 Nos.
- Worktop mounted electrical raceway in GI/CRCA powder coated construction
- 6/16 Amp electrical sockets and 16 Amp one way switch - 10 Nos.
- Filler Panel in GI construction - 2 Nos.

Quantity: 1 Nos

6. Over Head Cabinet (OHC) Size: L 1000 mm x D 450 mm x H 700 mm (MOC: GI Const.)

- 1000 mm wide storage module with two shutter

Quantity: 5 Nos

Aman Sachth
24/12/25



For the LAB 2102 B (Chemistry Lab, refer Section 2 Plans 1 & 4):

7. Constant Bypass type Bench Fume Hood, for Non - AC Labs (Size: L 1800 x D 915 x H 2300 mm) consisting of following (As specified in Section 5):

- Fume Hood Superstructure
- Fume Hood Worktop
- Service Valves
- Electrical Fittings
- Controls
- Fume Hood Understructure
- Fume Hood Under-Cabinet (Chemical Storage Purpose)
- Accessories

Quantity: 2 Nos.

8. Chemical Storage Cabinet (CSC) Size: L 1000 mm x D 450 mm x H 1830 mm

- Outer body in GI epoxy powder coated construction
- Inner Skin / Baffles in 5 mm thick. PP construction sheet on shelves.
- Special arrangement for ventilation from each shelf,
- Double skin metallic doors with Lock, Butt Hinges, Positive Catche and SS handles
- 100 mm dia. Duct damper in PP construction

Quantity: 1 Nos.

9. Exhaust Fan (PP) - one fan for 2 Nos. 1800 mm wide Fume Hoods and 1 Nos. of Chemical Storage Cabinet

- Single piece moulded UV treated chemical resistant SISW direct driven centrifugal fan in PP construction with suitable stand in MS powder coated construction, CFM 1900 to 2300
- Corrosive resistant PP Impeller with extra strength, high efficiency, properties which produces lower noise and power consumption.
- Drive - 5 HP, 2800 RPM, 415V, 50Hz., TEFC Class B Insulation Induction motor with IP55 enclosure, in Non- FLP const.
- 16A, 3Ph MCB for Fan - Legrand or eq. Make
- Electrical Panel with necessary internals and VFD for fan.

Quantity: 1 Nos.

Anwar Sadath
24/9/25



10. GENERAL PURPOSE SOLVENT STORAGE CABINET Size: L 1200 mm x D 500 mm x H 1800 mm

- Outer body in GI epoxy powder coated construction
- Inner Skin / Baffles in 3 mm FRP lining on shelves.
- Minimum 4±1 nos. shelves in 1 mm GI epoxy powder coated construction with stiffer and adjustable positioning.
- Double skin metallic doors with Lock, SS Butt Hinges, Positive Catche and SS handles
- Front door ventilation
- Lowest platform capable of bearing a load of at least 200 kg.

Quantity: 1 Nos.

11. ISLAND Bench (IB - 1) Size: L 4000 mm x W 1500 mm x H 900 mm

- C-Frame Structure in 60 x 30 x 2 mm thick hollow pipe construction
- Work top in 18 ± 1 mm thick White Nano-Glass (grade 7) construction
- L 500 mm x W 500 mm x H 700±50 mm storage module with one drawer one shutter - 8 Nos.
- Knee space - 6 Nos.
- Double sided double tier reagent rack with electrical raceway
- 6/16 Amp electrical sockets and 16 Amp one way switch - 24 Nos.
- Filler Panel in G.I. Construction - 2 Nos.

Quantity: 1 Nos.

12. Wall Bench (WB - 5) Size: L 4550 mm x W 750 mm x H 900 mm

- C-Frame Structure in 60 x 30 x 2 mm thick hollow pipe construction
- Work top in 18 ± 1 mm thick White Nano-Glass (grade 7) construction
- L 750 mm x W 500 mm x H 700±50 mm storage module with one drawer two shutters - 5 Nos.
- L 750 mm x W 500 mm x H 700±50 mm storage module with two shutters - 1 Nos.
- Single piece moulded PP sink (L 600 x W 450 x D 315 mm) - 1 Nos.
- Worktop mounted three way water tap with swan neck spout - 1 Nos.
- PP Adjustable Pegboard with 46 nos. PP Pegs. (Size: 600 x 600 mm) - 1 Nos.
- Worktop-mounted, double outlet eye wash with SS braided flexible hose, - 1 Nos.
- Worktop mounted electrical raceway in GI powder coated construction
- 6/16 Amp electrical sockets and 16 Amp one way switch - 14 Nos.
- Filler Panel in G.I. Construction - 2 Nos.



Anura Sachith
29/9/24

Quantity: 1 Nos.

13. Over Head Cabinet (OHC) L 1000 mm x D 450 mm x H 700 mm (MOC: GI Const.)
- 1000 mm wide storage module with two shutter

Quantity: 2 Nos

14. Supply of Exhaust ducting in PP + FRP (Round Shape) construction (3+2mm)
- Exhaust ducting in PP + FRP (Round Shape) construction (3mm + 2mm) complete with necessary bends, reducers, T-connections, supports, flanges, gaskets, nut-bolts etc.
 - Amount for ducting work shall be payable as per actual measurement.

Quantity: 32 Sq. m

15. Laboratory stools (regular size)

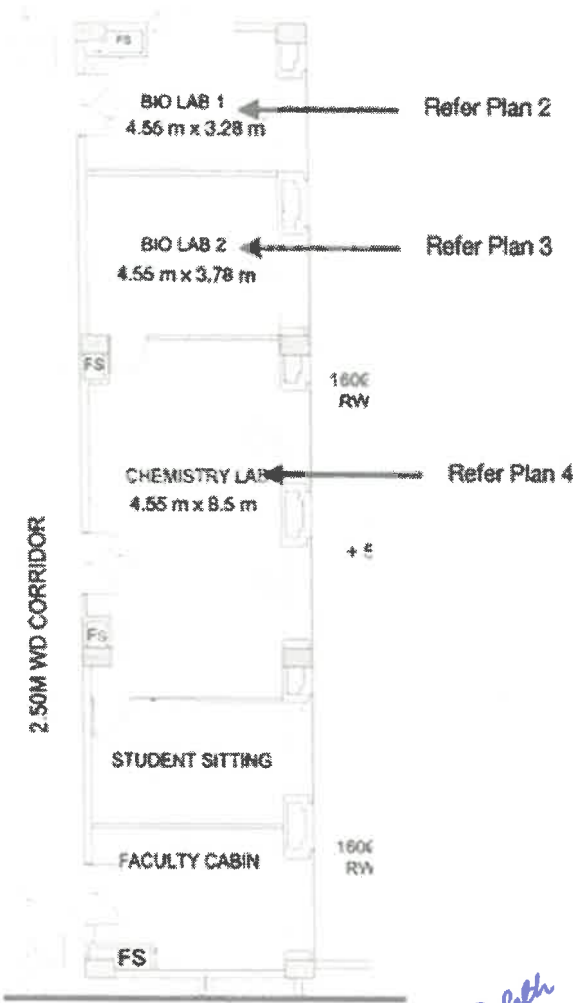
Quantity: 10 Nos.

Anwar Zaidi
24/9/25



SECTION 2: Plans

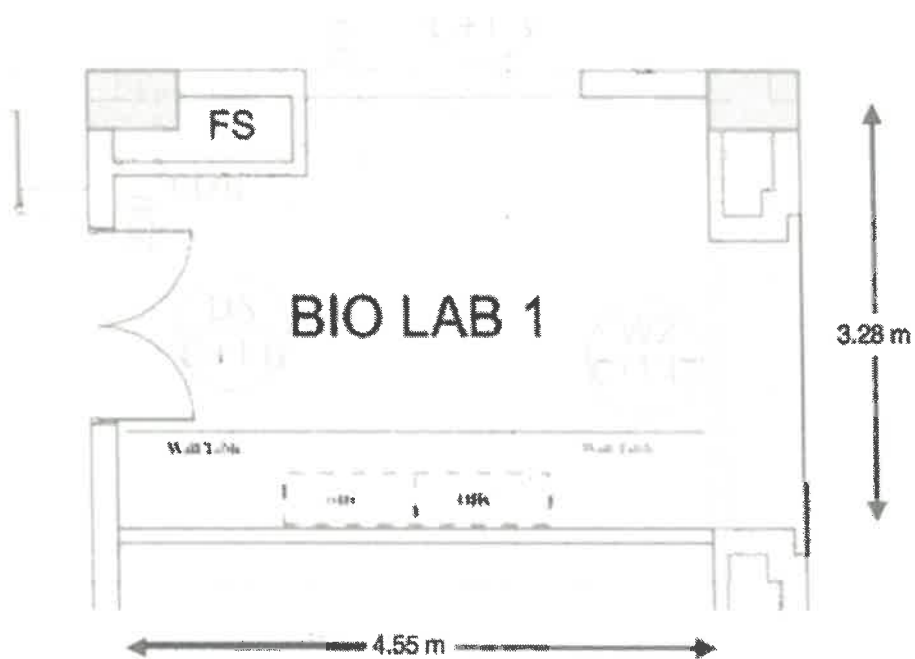
PLAN 1



Aman Sodath
24/9/25



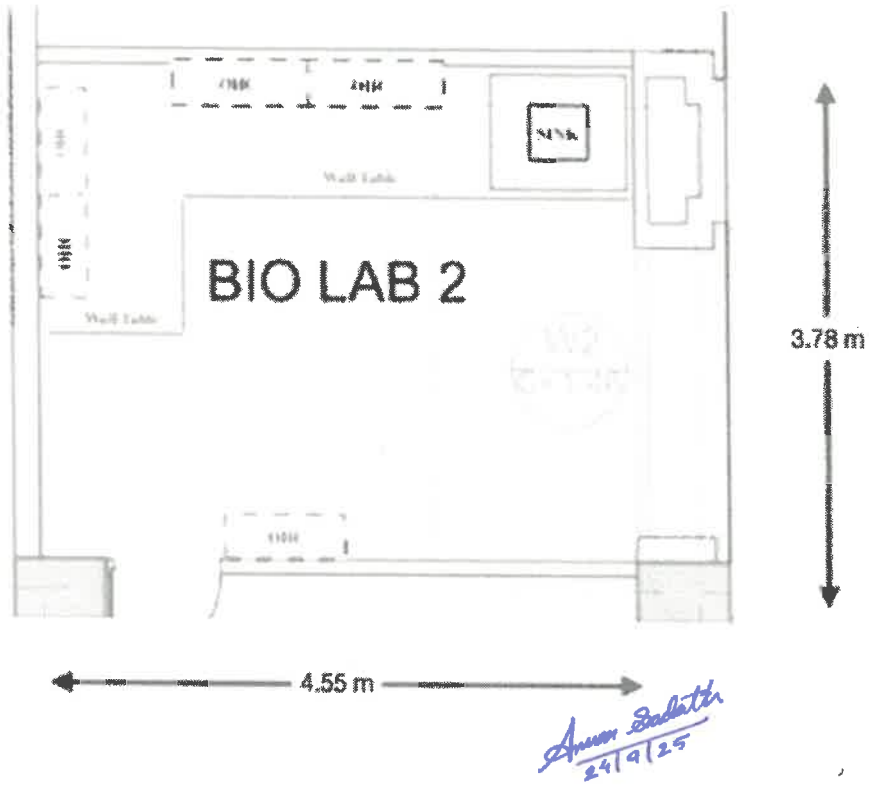
Plan 2



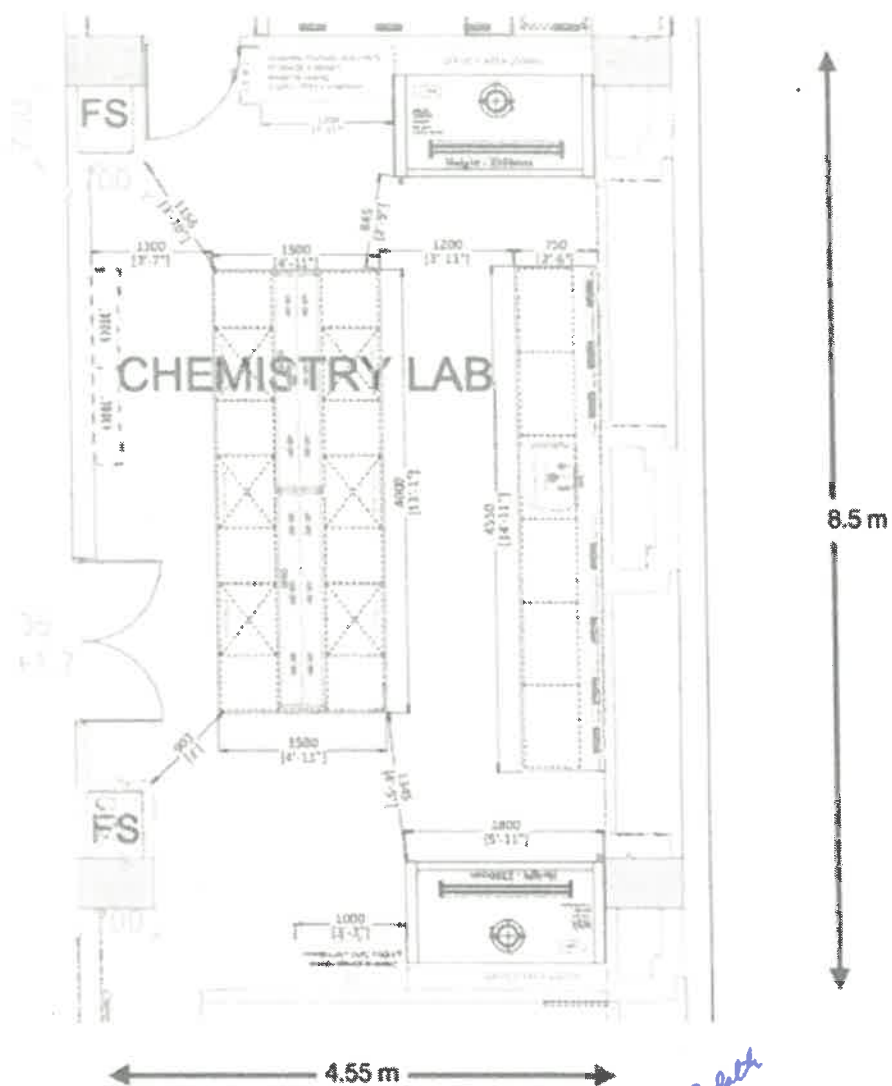
Amey Sadash
24/9/25



Plan 3



Plan 4



Anwar Sadiq
24/9/25



SECTION 5: FUME HOOD SPECIFICATIONS

Sr. No.	DESCRIPTION	Qty (Nos.)
1	Type of Hood: Constant Bypass type Bench Fume Hood	
2	Overall Dimension: Width 1800 x Depth 915 x Height 2300 mm	
3	Inner Dimension: Width 1600 x Depth 645 x Height 1200 mm	
4	<p>Fume Hood Superstructure consisting of:</p> <ul style="list-style-type: none"> - Structure frame in 2.0 mm thick GI construction - Inner lining, rear baffles and top baffles in 8 mm thk. Phenolic resin construction - Outer panels in 1.2 mm thick GI construction. - Aerodynamic Shape front posts, in GI construction - Flip-on type Airfoil in 1.6 mm thick SS construction - Streamlined shaped exhaust duct collar in PP const. - Combination type, frameless design sash in toughened glass const. with full length sash handle in anodized Al const. - Sash movement mechanism with counter weight. - Twin LED tube type light with fittings 	1
5	<p>Fume Hood Worktop</p> <p>In telephone black natural granite construction, having raised rails on all four-sides, with 1 No. oval shaped cup sink, in PP const., on left rear side.</p>	1
6	<p>Service Valves</p> <p>Having body in forged brass const., extended spindle in Aluminum construction, color coded knobs in plastic const. angular shaped serrated nozzles, in epoxy coated forged brass const. 1.5mt. long flexible tubing with end fittings for following services:</p>	
7	<p>Services</p> <p>Tube Construction</p>	
8	Compressed Air	PU-4
9	Vacuum	SS braided Teflon Hose
10	Nitrogen	PU-4
11	Potable Water	Nylon braided PVC Hose
12	Electrical Services with internal wiring (all in non-FLP const.)	
13	Controller for Blower & light (Touch Pad)	1
14	16A, 2 Pole MCB - Legrand or eq. Make	1
15	5/15A 3-pin Socket with switch/ MCB - Legrand or eq. Make	4



Amun Sadath
24/9/25

16	Controls Air velocity Monitor with low air alarm, Model AFA/1000 TEL - UK Make	1
17	Fume Hood Understructure Fabricated out of heavy gauge rectangular shape hollow pipes in MS construction, duly finished with corrosion resistant specialty coatings.	1
18	Fume Hood Under-Cabinet (Chemical Storage Purpose) Detachable design Chemical purpose twin cabinets fabricated out of GI sheet, consisting of: <ul style="list-style-type: none"> - Special arrangement for air ventilation inside the cabinet - Twin doors in double wall const. - Flushed type recessed handle. - Heavy duty knuckle-barrier special design door hinges. - 1 No. removable shelf. - Recessed base frame in heavy duty GI const. - FRP Lining inside the chemical storage cabinet - PP Tray for chemical storage - Twin castors for easy removal of the cabinet. 	1
19	Accessories	
20	300 mm dia. Duct damper in PP const. complete with pre drilled flanges on both sides, manual operation handle and extended spindle, suitable for motorized drive.	1
21	Scaffold Grill (1630 x 750 mm) in Vertical rod design, fabricated out of 12.0 mm dia.,	1
22	Epoxy rods, having 150mm pitch between two rods.	1 Set



Amar Singh
24/9/25

SECTION 6: Compliance Sheet

(A) Technical requirements

SL#	Item / Specification	RESPONSE (Yes/No)
1	Wall Bench (WB-1) — Size: L 2900 mm x W 750 mm x H 900 mm (1 Nos.)	
2	C-Frame structure: 60 x 30 x 2 mm hollow pipe	
3	Worktop: 18 ± 1 mm white Nano glass (G7 grade)	
4	L 750 mm x W 500 mm x H 700±50 mm storage module: one drawer + two shutters (3 Nos.)	
5	Knee space (1 Nos.)	
6	Worktop-mounted electrical raceway: GI powder coated	
7	6/16 A electrical sockets and 16 A one-way switch (10 Nos.)	
8	Filler panel: GI construction (2 Nos.)	
9	Wall Bench (WB-2) — Size: L 4550 mm x W 750 mm x H 900 mm (1 Nos.)	
10	C-Frame structure: 60 x 30 x 2 mm hollow pipe	
11	Worktop: 18 ± 1 mm white Nano glass (G7 grade)	
12	L 750 mm x W 500 mm x H 700±50 mm storage module: one drawer + two shutters (4 Nos.)	
13	Knee space (1 Nos.)	
14	Worktop-mounted electrical raceway: GI powder coated	
15	6/16 A electrical sockets and 16 A one-way switch (12 Nos.)	
16	Close panel: GI construction (1 Nos.)	
17	Granite support structure (1 Nos.)	
18	Filler panel: GI construction (2 Nos.)	
19	Wall Bench (WB-3) — Size: L 4550 mm x W 750 mm x H 900 mm (1 Nos.)	
20	C-Frame structure: 60 x 30 x 2 mm hollow pipe	
21	Worktop: 18 ± 1 mm white Nano glass (G7 grade)	
22	L 750 mm x W 500 mm x H 700±50 mm storage module: one drawer + two shutters (3 Nos.)	
23	L 750 mm x W 500 mm x H 700±50 mm storage module with two shutters (1 Nos.)	
24	Single piece moulded PP sink (L600 x W 450 x D 315 mm) (1 Nos.)	
25	Water tap: worktop-mounted three-way with swan neck spout (1 Nos.)	
26	PP Adjustable Pegboard with 46 nos. PP Pegs. (Size: 600 x 600 mm) (1 Nos.)	



Amar Sodhi
24/9/25

- 27 Worktop mounted, double outlet eye wash with SS braided flexible hose (1 Nos.)
- 28 Knee space (1 Nos.)
- 29 Worktop-mounted electrical raceway: GI powder coated
- 30 6/16 A electrical sockets and 16 A one-way switch (10 Nos.)
- 31 Close panel: GI construction (1 Nos.)
- 32 Granite support structure (1 Nos.)
- 33 Filler panel: GI construction (2 Nos.)
- 34 **Wall Bench (WB-4) — Size: L 3000 mm x W 750 mm x H 900 mm (1 Nos.)**
- 35 C-Frame structure: 60 x 30 x 2 mm hollow pipe
- 36 Worktop: 18 ± 1 mm white Neno glass (grade G7)
- 37 L 750 mm x W 500 mm x H 700±50 mm storage module: one drawer + two shutters (3 Nos.)
- 38 Knee space (1 Nos.)
- 39 Worktop-mounted electrical raceway: GI powder coated
- 40 6/16 A electrical sockets and 16 A one-way switch (10 Nos.)
- 41 Filler panel: GI construction (2 Nos.)
- 42 **Constant Bypass Type Bench Fume Hood (Non-AC) — Size: L 1800 x D 915 x H 2300 mm (2 Nos.)**
- 43 Conform Specifications and quantities in Annexure I
- 44 Superstructure: Phenolic resin panels & LED light
- 45 Worktop: Black granite construction
- 46 Service valves: as per Annexure
- 47 Electrical fittings
- 48 Controls
- 49 Understructure
- 50 Under-cabinet chemical storage
- 51 Accessories
- 52 **Chemical Storage Cabinet (CSC) — Size: L 1000 x D 450 x H 1830 mm (1 Nos.)**
- 53 Outer body: GI epoxy powder coated
- 54 Inner skin/baffles: 5 mm PP sheets on shelves
- 55 Special arrangement for ventilation from each shelf
- 56 Double-skin metallic doors with lock, butt hinges, positive catch, SS handles
- 57 100 mm dia PP duct damper



Amar Sanketh
24/11/25

- 58 Exhaust Fan (PP) — Serves 2 Fume Hoods (1800 mm) + 1 Chemical Storage Cabinet (1 Nos.)
- 59 Fan: Single-piece molded UV-treated chemical-resistant SISW direct driven centrifugal, PP construction, stand in MS powder-coated, CFM 1900–2300
- 60 Impeller: Corrosion-resistant PP, high efficiency, low noise/power consumption
- 61 Drive: 5 HP, 2800 RPM, 415V, 50Hz, TEFC Class B, IP55 enclosure, Non-FLP
- 62 Protection: 16A, 3-Phase MCB for fan (Legrand or equivalent)
- 63 Electrical panel with necessary internals and VFD for fan
- 64 General Purpose Solvent Storage Cabinet — Size: L 1200 x D 500 x H 1800 mm (1 Nos.)
- 65 Outer body in 1mm GI epoxy powder coated construction
- 66 Inner Skin / Baffles in 3 mm FRP lining.
- 67 Frame 30x30x1.2mm hollow tube
- 68 Adjustable shelf in 1 mm GI epoxy powder coated construction with stiffer (Minimum 4 Nos.)
- 69 SS butt hinges
- 70 Double skin 1 mm metallic door
- 71 Lowest platform with a minimum capacity to bear a load of at least 200 kg
- 72 Front door ventilation
- 73 Island Bench (IB-1) — Size: L 4000 mm x W 1500 mm x H 900 mm (1 Nos.)
- 74 C-Frame structure: 60 x 30 x 2 mm hollow pipe
- 75 Worktop: 18 ± 1 mm white Nano glass (grade G7)
- 76 L 500 mm x W 500 mm x H 700±50 mm storage module: one drawer + one shutter (8 Nos.)
- 77 Knee space (6 Nos.)
- 78 Double-sided double-tier reagent rack with electrical raceway
- 79 6/16 A electrical sockets and 16 A one-way switch (24 Nos.)
- 80 Filler panel: GI construction (2 Nos.)
- 81 Wall Bench (WB-5) — Size: L 4550 mm x W 750 mm x H 900 mm (1 Nos.)
- 82 C-Frame structure: 60 x 30 x 2 mm hollow pipe
- 83 Worktop: 18 ± 1 mm white Nano glass (G7 grade)
- 84 L 750 mm x W 500 mm x H 700±50 mm storage module: one drawer + two shutters (5 Nos.)
- 85 L 750 mm x W 500 mm x H 700±50 mm storage module with two shutters (1 Nos.)



Amar Sanketh
24/9/25

- 86 Single piece moulded PP sink (L600 x W 450 x D 315 mm) (1 Nos.)
- 87 Water tap: worktop-mounted three-way with swan neck spout (1 Nos.)
- 88 PP Adjustable Pegboard with 46 nos. PP Pegs. (Size: 600 x 600 mm) (1 Nos.)
- 89 Worktop mounted, double outlet eye wash with SS braided flexible hose (1 Nos.)
- 90 Worktop-mounted electrical raceway: GI powder coated
- 91 6/16 A electrical sockets and 16 A one-way switch (14 Nos.)
- 92 Filler panel: GI construction (2 Nos.)
- 93 **Wall-Mounted Storage Cabinet — Size: L 1000 mm x W 350 mm x H 800 mm (each) (9 Nos.)**
- 94 GI construction, epoxy powder coated; 1 adjustable shelf; double-skin glass doors with locks
- 95 Exhaust Ducting — PP + FRP round (3 mm + 2 mm)
- 96 Includes bends, reducers, T-connections, supports, flanges, gaskets, nut-bolts, etc.
- 97 Payment as per actual measurement
- 98 Quantity: Length ~37.00 square meters
- 99 Regular size laboratory stools (10 Nos.)
- 100 **The bidder shall produce all the necessary certifications:**
- 101 SEFA membership certificate
- 102 Third party testing certificate of SEFA 8M-2016 compliance
- 103 Third party testing certificate of SEFA-10-2016 compliance Adaptable Laboratory Furniture Systems
- 104 ASHRAE membership certificate
- 105 Third party testing certificate of of type testing in accordance with ASHRAE 110 & SEFA 1
- 106 Third party testing certificate of of type testing in accordance with EN 14175, Part 3
- 107 ISO - 9001:2015 certificate
- 108 ISO - 14001:2015 certificate
- 109 ISO - 45001:2018 certificate
- 110 IGBC membership certificate
- 111 BIFMA membership certificate



Anwar Sabitha
24/9/25

(B) Other requirements

S/N Description

RESPONSE
(Yes/No)

- 1 The bidder must visit the site and prepare and submit the sketch/drawing for the proposed work within the stipulated time.
- 2 The entire work shall be done with all necessary scaffoldings, working platforms, ladders, safety measures etc. The rates quoted shall include all such arrangements and no extra claims shall be entertained in this regard. Hence the exact site conditions, height and working areas shall be clearly assessed by the agency before quoting the tender.
- 3 Sample for all the makes shall be produced by the bidder upon request from the client.
- 4 Factory site visit (online/offline) as per the convenience of the client shall be arranged by the bidder to demonstrate the capacity of the firm to carryout the work.

CHECK LIST OF DOCUMENT REQUIRED

S/N	List of Documents	Enclosed (Yes/No)
1	Brochures/ Catalogues/ Datasheets	
2	BoQ	
3	Statutory Registration Certificates	
4	Three purchase orders of works of value 70 lakhs or more carried out at public sector institutes in the previous two years	
5	Photos of previous work involving mounting grade G7 Nano glass on a C-frame carried out at a public sector establishment along with purchase order.	
6	Tender document duly signed on all pages along with bidders seal.	
7	Technical Compliance sheet	
8	Other documents pertaining to technical aspects	
9	Any other document as provided in the Section 1: Requirements	

Amun Sadath
24/9/25



INDIAN INSTITUTE OF SCIENCE EDUCATION AND RESEARCH
THIRUVANANTHAPURAM (IISER TVM)
(An Autonomous Institute under MHRD, Govt. of India)



TECHNICAL SPECIFICATIONS

Dr. Ayan Mukherjee's Lab
LAB 2103
Furniture and Equipment

Ayan Sarkar
24/9/25



For the Dust Free room :

1. Wall Bench (WB - 1) Size: L 2450 mm x W 900 mm x H 900 mm

- C-Frame Structure in 60 x 30 x 2 mm thick hollow pipe construction
- Work top in 18 ± 1 mm thick **White Nano-Glass (grade 7)** construction
- 750 mm wide 500 mm depth 700±50 mm height storage module with one drawer two shutters-2 Nos.
- Knee space-1Nos
- Worktop mounted electrical raceway in GI powder coated construction
- 6/16 Amp electrical sockets and 16 Amp one way switch -8 Nos
- Close Panel in G.I. Construction-1Nos
- Modesty Panel in G.I. Construction-1Nos
- Filler Panel in G.I. Construction – 2 Nos

Quantity: 1 Nos

2. Wall Bench (WB - 2) Size: L 2950 mm x W 900 mm x H 900 mm

- C-Frame Structure in 60 x 30 x 2 mm thick hollow pipe construction
- Work top in 18 ± 1 mm thick **white Nano- glass (grade 7)** construction
- 750 mm wide 500 mm depth 700±50 mm height storage module with one drawer two shutters-1 Nos.
- 500 mm wide 500 mm depth 700±50 mm height storage module with one drawer two shutters-1 Nos.
- Knee space- 1 Nos
- Worktop mounted electrical raceway in GI powder coated construction
- 6/16 Amp electrical sockets and 16 Amp one way switch- 14 Nos
- Close Panel in G.I. Construction- 1Nos
- Modesty Panel in G.I. Construction- 1Nos
- Filler Panel in G.I. Construction- 2 Nos

Quantity: 1 Nos

Chemistry Lab 2103

3. Contant Bypass type Bench Fume Hood (Size: L 1800 x D 915 x H 2300 mm) (For Non - AC Labs)

Anwar Zadeh
24/12/25



Consisting of following : (As specified in Annexure - I)

- -Fume hood Superstructure
- -Fume hood Worktop
- -Service Valves
- -Electrical Fittings
- -Controls
- -Fume hood understructure
- -Fume hood under-cabinet – (Chemical storage purpose)
- -Accessories

Quantity: 2 Nos

4. Chemical Storage Cabinet (CSC) Size: L 1000 x D 450 x H 1830mm

- Outer body in GI epoxy powder coated construction
- Inner Skin / Baffles in 5mm Thk. PP construction sheet on shelves.
- Special arrangement for ventilation from each shelf.
- Double skin metallic doors with Lock, Butt Hinges, Positive Catche and SS handles
- 100mm dia. Duct damper in PP construction

Quantity: 1 Nos

5. Exhaust Fan (PP) - one fan for 2 Nos. 1800 mm wide Fume Hood and 1 Nos. of chemical storage cabinet

- Single piece molded UV treated chemical resistant SISW direct driven centrifugal fan in PP constuction with suitable stand in MS powder coated construction. CFM 1900 to 2300
- Corrosive resistant PP Impeller with extra strength, high efficiency, properties which produces lower noise and power consumption.
- Drive - 5 HP, 2800 RPM, 415V, 50Hz., TEFC Class B insulation induction motor with IP55 enclosure, in Non- FLP const.
- 16A, 3Ph MCB for Fan - Legrand or eq. Make
Electrical Panel with necessary internals and VFD for fan

6. General purpose solvent storage cabinet Size: L 1200 x D 500 x H 1800 mm

- Outer body in GI epoxy powder coated construction
- Inner Skin / Baffles in 3 mm FRP lining on shelves.
- Minimum 4±1 nos. shelves in 1 mm GI epoxy powder coated construction with stiffer and adjustable positioning.

Amar Singh
24/9/25



- Double skin metallic doors with Lock, SS Butt Hinges, Positive Catche and SS handles
- Front door ventilation
- Lowest platform capable of bearing a load of at least 200 kg.

Quantity: 1 Nos

7. ISLAND Bench (IB - 1) Size: L 3500 mm x W 1500 mm x H 900 mm

- C-Frame Structure in 60 x 30 x 2 mm thick hollow pipe construction
- Work top in 18 ± 1 mm thick **White Nano-Glass (grade 7)** construction
- 500 mm wide 500 mm depth 700±50 mm height storage module with one drawer one shutter - 6 Nos.
- Knee space- 6 Nos.
- Double sided double tier reagent rack with electrical raceway
- 6/16 Amp electrical sockets and 16 Amp one way switch- 24 Nos.
- Modesty Panel in G.I. Construction- 2 Nos
- Filler Panel in G.I. Construction- 2 Nos

Quantity: 1 Nos

8. Wall Bench (WB - 3) Size: L 3350 mm x W 750 mm x H 900 mm

- C-Frame Structure in 60 x 30 x 2 mm thick hollow pipe construction
- Work top in 18 ± 1 mm thick **White Nano-Glass (grade 7)** construction
- 750 mm wide 500 mm depth 700±50 mm height storage module with one drawer two shutters- 2 Nos.
- 500 mm wide 500 mm depth 700±50 mm height storage module with one drawer one shutter - 1 Nos.
- Knee space - 2 Nos.
- Worktop mounted electrical raceway in GI powder coated construction
- 6/16 Amp electrical sockets and 16 Amp one way switch -12 Nos.
- Filler Panel in G.I. Construction -2 Nos.

Quantity: 1 Nos

9. Wall Bench (WB - 4) Size: L 3900 mm x W 750 mm x H 900 mm

- C-Frame Structure in 60 x 30 x 2 mm thick hollow pipe construction
- Work top in 18 ± 1 mm thick **White Nano-Glass (grade 7)** construction
- 750 mm wide 500 mm depth 700±50 mm height storage module with one drawer two shutters- 2 Nos
- 750 mm wide 500 mm depth 700±50 mm height storage module with two shutters- 1 Nos

4



Amar Sadath
24/2/25

- Single piece molded PP sink (L 600 × W 450 × D 315)- 1 Nos
- Worktop mounted three way water tap with swan neck spout- 1 Nos
- PP Adjustable Pegboard with 46 nos. PP Pegs. (Size: 600 × 600 mm) - 1 Nos
- Worktop mounted. double outlet eye wash with SS braided flexible hose- 1 Nos
- Knee space- 1 Nos
- Worktop mounted electrical raceway in GI powder coated construction
- 6/16 Amp electrical sockets and 16 Amp one way switch- 6 Nos
- Close Panel in G.I. Construction- 1 Nos
- Modesty Panel in G.I. Construction- 1 Nos
- Filler Panel in G.I. Construction- 2 Nos

Quantity: 1 Nos

10. Wall Bench (WB - 5) Size: L 2501 mm x W 750 mm x H 900 mm

- C-Frame Structure in 60 × 30 × 2 mm thick hollow pipe construction
- Work top in 18 ± 1 mm thick **White Nano-Glass (grade 7)** construction
- 750 mm wide 500 mm depth 700±50 mm height storage module with one drawer two shutters- 1 Nos.
- 500 mm wide 500 mm depth 700±50 mm height storage module with one drawer one shutter - 2 Nos.
- Knee space- 1 Nos.
- Worktop mounted electrical raceway in GI powder coated construction
- 6/16 Amp electrical sockets and 16 Amp one way switch- 12 Nos.
- Filler Panel in G.I. Construction- 2 Nos

Quantity: 1 Nos

11. Wall Bench (WB - 6) Size: L 1500 mm x W 750 mm x H 900 mm

- C-Frame Structure in 60 × 30 × 2 mm thick hollow pipe construction
- Work top in 18 ± 1 mm thick **White Nano-Glass (grade 7)** construction
- 750 mm wide 500 mm depth 700±50 mm height storage module with one drawer two shutters- 2 Nos.
- Worktop mounted electrical raceway in GI powder coated construction
- 6/16 Amp electrical sockets and 16 Amp one way switch- 6 Nos.
- Back Panel in G.I. Construction- 1 Nos.
- Filler Panel in G.I. Construction- 2 Nos.
- **Quantity: 1 Nos**

12. Wall Mounted Storage Cabinet Size: L 1000 mm x W 350 mm x H 600 mm



Amar Sadath
24/2/25

- Wall mounted cabinets in G.I. construction with epoxy powder coated one no. adjustable self with double skin Glass doors and Locks
Quantity: 2 Nos

13. Supply of Exhaust ducting in PP + FRP (Round Shape) construction (3+2mm)
Exhaust ducting in PP+FRP Round Shape construction 3mm+2mm complete with necessary bends, reducers, T-connections, supports, flanges, gaskets, nutbolts etc. Note
- Amount for ducting work shall be payable as per actual measurement.

Quantity: ~37.00 Square Mtr.

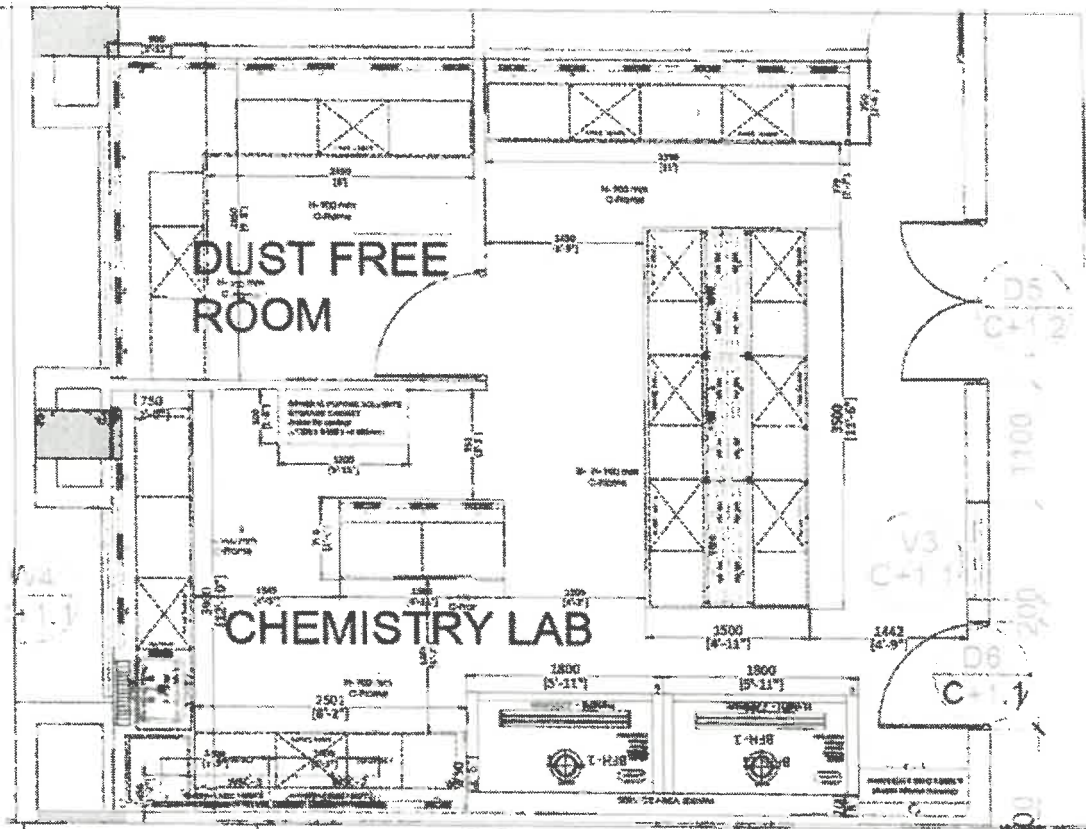
14. Laboratory stools (regular size)
Quantity: 10 Nos

15. The bidder must visit the site and prepare and submit the sketch/drawing for the proposed work within the stipulated time.
16. The bidder shall furnish the Brochures/Catalogues/Datasheets of all the components that are stated.
17. The entire work shall be done with all necessary scaffoldings, working platforms, ladders, safety measures etc. The rates quoted shall include all such arrangements and no extra claims shall be entertained in this regard. Hence the exact site conditions, height and working areas shall be clearly assessed by the agency before quoting the tender.
18. Sample for all the makes shall be produced by the bidder upon request from the client.
19. The bidder should have experience working with Nano glass (grade G7) mounted on C Frame. The bidder shall furnish photos of previous work carried out at a public sector establishment along with Purchase order.
20. Factory site visit (online/offline) as per the convenience of the client shall be arranged by the bidder to demonstrate the capacity of the firm to carry out the work.
21. The bidder shall furnish purchase order of three works carried out in the previous two years at public sector institutes of value over ₹ 70 00 000 or more.



Aman Salath
24/9/25

SECTION 2: Plan



Ammon Gadath
24/9/25

SECTION 5: FUME HOOD SPECIFICATIONS

Sr. No.	DESCRIPTION	Qty (Nos.)
1	Type of Hood: Constant Bypass type Bench Fume Hood	2
2	Overall Dimension: Width 1800 x Depth 915 x Height 2300 mm	
3	Inner Dimension: Width 1600 x Depth 645 x Height 1200 mm	
4	<p>Fume Hood Superstructure consisting of:</p> <ul style="list-style-type: none"> • Structure frame in 2.0 mm thick GI construction • Inner lining, rear baffles and top baffles in 6 mm thk. Phenolic resin construction • Outer panels in 1.2 mm thick GI construction. • Aerodynamic Shape front posts, in GI construction • Flip-on type Airfoil in 1.6 mm thick SS construction • Streamlined shaped exhaust duct collar in PP const. • Combination type, frameless design sash in toughened glass const. with full length sash handle in anodized Al const. • Sash movement mechanism with counter weight. • Twin LED tube type light with fittings 	1
5	<p>Fume Hood Worktop</p> <p>In telephone black natural granite construction, having raised rails on all four sides, with 1 No. oval shaped cup sink, in PP const., on left rear side.</p>	1
6	<p>Service Valves</p> <p>Having body in forged brass const., extended spindle in Aluminum construction, color coded knobs in plastic const., angular shaped serrated nozzles, in epoxy coated forged brass const. 1.5mt. long flexible tubing with end fittings for following services:</p>	
7	<p>Services</p> <p>Tube Construction</p>	
8	<p>Compressed Air</p> <p>PU-4</p>	1
9	<p>Vacuum</p> <p>SS braided Teflon Hose</p>	1
10	<p>Nitrogen</p> <p>PU-4</p>	1



Amrinder Sodhi
24/9/25

11	Potable Water	Nylon braided PVC Hose	1
12	Electrical Services with internal wiring (all in non-FLP const.)		
13	Controller for Blower & light (Touch Pad)		1
14	16A. 2 Pole MCB - Legrand or eq. Make		1
15	5:15A 3-pin Socket with switch/ MCB - Legrand or eq. Make		4
16	Controls		1
	Air velocity Monitor with low air alarm, Model AFA 1000 TEL - UK Make		
17	Fume Hood Understructure		1
	Fabricated out of heavy gauge rectangular shape hollow pipes in MS construction, duly finished with corrosion resistant specialty coatings.		
18	<p>Fume Hood Under-Cabinet (Chemical Storage Purpose)</p> <p>Detachable design Chemical purpose twin cabinets fabricated out of GI sheet, consisting of:</p> <ul style="list-style-type: none"> - Special arrangement for air ventilation inside the cabinet • Twin doors in double wall const. • Flushed type recessed handle. • Heavy duty knuckle-bartler special design door hinges. • 1 No. removable shelf. • Recessed base frame in heavy duty GI const. • FRP Lining inside the chemical storage cabinet • PP Tray for chemical storage • Twin castors for easy removal of the cabinet. 		
19	Accessories		
20	300 mm dia. Duct damper in PP const. complete with pre drilled flanges on both sides, manual operation handle and extended spindle, suitable for motorized drive.		
21	Scaffold Grill (1630 x 750 mm) in Vertical rod design, fabricated out of 12.0 mm dia.,		
22	Epoxy rods, having 150mm pitch between two rods.		
			1 Set



Aman Sadath
29/9/25

SECTION 6: Technical Compliance Sheet

Part A

Item / Specification	Whether (Yes/No)
1) Wall Bench (WB-1) — Size: L 2450 mm x W 900 mm x H 900 mm	
C-Frame structure: 60 x 30 x 2 mm hollow pipe	
Work top in 18 ± 1 mm thick White Nano-Glass (grade 7) construction	
750 mm wide 500 mm depth 700±50 mm height storage module with one drawer two shutters-2 Nos.	
Knee space-1Nos	
Worktop-mounted electrical raceway: GI powder coated	
6/16 Amp electrical sockets and 16 Amp one way switch -8 Nos	
Close Panel in G.I. Construction-1Nos	
Modesty Panel in G.I. Construction-1Nos	
Filler Panel in G.I. Construction — 2 Nos	
Quantity: 1 No.	
2) Wall Bench (WB-2) — Size: L 2950 mm x W 900 mm x H 900 mm	
C-Frame structure: 60 x 30 x 2 mm hollow pipe	
Work top in 18 ± 1 mm thick white Nano-glass (grade 7) construction	
750 mm wide 500 mm depth 700±50 mm height storage module with one drawer two shutters-1 Nos.	
500 mm wide 500 mm depth 700±50 mm height storage module with one drawer two shutters-1 Nos.	
Knee space- 1 Nos	
Worktop-mounted electrical raceway: GI powder coated	
6/16 Amp electrical sockets and 16 Amp one way switch- 14 Nos	
Close Panel in G.I. Construction- 1Nos	
Modesty Panel in G.I. Construction- 1Nos	
Filler Panel in G.I. Construction- 2 Nos	
Quantity: 1 No.	
3) Contant Bypass type Bench Fume Hood (Non-AC) — Size: L 1800 x D 915 x H 2300 mm as specified in Annexure - I	
Fume hood Superstructure	
Fume hood Worktop	
Service Valves	
Electrical Fittings	
Controls	
Fume hood understructure	
Fume hood under-cabinet — (Chemical storage purpose)	
Accessories	
Quantity: 2 Nos.	
4) Chemical Storage Cabinet (CSC) — Size: L 1000 x D 450 x H 1830 mm	
Outer body: GI epoxy powder coated	
Inner skin/baffles: 5 mm PP sheets on shelves	
Ventilation from each shelf special arrangement 39	



Anwar Sadath
24/9/25

Double-skin metallic doors with lock, butt hinges, positive catch, SS handles	
100 mm dia PP duct damper	
Quantity: 1 No.	
5) Exhaust Fan (PP) — Serves 2 Fume Hoods (1800 mm) + 1 Chemical Storage Cabinet	
Single-piece molded UV-treated chemical-resistant SISW direct driven centrifugal, PP construction, stand in MS powder-coated, CFM 1900–2300	
Corrosive resistant PP Impeller with extra strength, high efficiency, properties which produces lower noise and power consumption.	
Drive - 5 HP, 2800 RPM, 415V, 50Hz., TEFC Class B insulation induction motor with IP55 enclosure, in Non- FLP const.	
16A, 3Ph MCB for Fan - Legrand or eq. Make	
Electrical Panel with necessary internals and VFD for fan	
6) General Purpose Solvent Storage Cabinet — Size: L 1200 x D 500 x H 1800 mm	
Outer body in GI epoxy powder coated construction	
Inner Skin / Baffles in 3 mm FRP lining on shelves.	
Minimum 4±1 nos. shelves in 1 mm GI epoxy powder coated construction with stiffer and adjustable positioning.	
Double skin metallic doors with lock, SS Butt Hinges, Positive Catche and SS handles	
Front door ventilation	
Lowest platform capable of bearing a load of at least 200 kg.	
Quantity: 1 No.	
7) Island Bench (IB-1) — Size: L 3500 mm x W 1500 mm x H 900 mm	
C-Frame Structure in 60 x 30 x 2 mm thick hollow pipe construction	
Work top in 18 ± 1 mm thick White Nano-Glass (grade 7) construction	
500 mm wide 500 mm depth 700±50 mm height storage module with one drawer one shutter - 6 Nos.	
Knee space- 6 Nos.	
Double-sided double-tier reagent rack with electrical raceway	
6/16 Amp electrical sockets and 16 Amp one way switch- 24 Nos.	
Modesty Panel in G.I. Construction- 2 Nos	
Filler Panel in G.I. Construction- 2 Nos	
Quantity: 1 No.	
8) Wall Bench (WB-3) — Size: L 3350 mm x W 750 mm x H 900 mm	
C-Frame Structure in 60 x 30 x 2 mm thick hollow pipe construction	
Work top in 18 ± 1 mm thick White Nano-Glass (grade 7) construction	
750 mm wide 500 mm depth 700±50 mm height storage module with one drawer two shutters- 2 Nos.	
500 mm wide 500 mm depth 700±50 mm height storage module with one drawer one shutter - 1 Nos.	
Knee space - 2 Nos	
Worktop mounted electrical raceway in GI powder coated construction	
6/16 Amp electrical sockets and 16 Amp one way switch -12 Nos.	
Filler Panel in G.I. Construction -2 Nos.	



Aman Salath
24/9/25

Quantity: 1 No.	
9) Wall Bench (WB-4) — Size: L 3500 mm x W 750 mm x H 900 mm	
C-Frame Structure in 60 x 30 x 2 mm thick hollow pipe construction	
Work top in 18 ± 1 mm thick White Nano-Glass (grade 7) construction	
750 mm wide 500 mm depth 700±50 mm height storage module with one drawer two shutters- 2 Nos	
750 mm wide 500 mm depth 700±50 mm height storage module with two shutters- 1 Nos	
Worktop mounted three way water tap with swan neck spout- 1 Nos	
PP Adjustable Pegboard with 46 nos. PP Pegs. (Size: 600 x 600 mm) - 1 Nos	
Worktop mounted, double outlet eye wash with SS braided flexible hose- 1 Nos	
Knee space- 1 Nos	
Worktop mounted electrical raceway in GI powder coated construction	
Knee space	
Worktop-mounted electrical raceway: GI powder coated	
5/16 Amp electrical sockets and 16 Amp one way switch- 6 Nos	
Close Panel in G.I. Construction- 1 Nos	
Modesty Panel in G.I. Construction- 1 Nos	
Filler Panel in G.I. Construction- 2 Nos	
Quantity: 1 No.	
10) Wall Bench (WB-5) — Size: L 2501 mm x W 750 mm x H 900 mm	
C-Frame Structure in 60 x 30 x 2 mm thick hollow pipe construction	
Work top in 18 ± 1 mm thick White Nano-Glass (grade 7) construction	
750 mm wide 500 mm depth 700±50 mm height storage module with one drawer two shutters- 1 Nos.	
500 mm wide 500 mm depth 700±50 mm height storage module with one drawer one shutter - 2 Nos.	
Knee space- 1 Nos.	
Worktop mounted electrical raceway in GI powder coated construction	
6/16 Amp electrical sockets and 16 Amp one way switch- 12 Nos	
Filler Panel in G.I. Construction- 2 Nos	
Quantity: 1 No.	
11) Wall Bench (WB-6) — Size: L 1500 mm x W 750 mm x H 900 mm	
C-Frame Structure in 60 x 30 x 2 mm thick hollow pipe construction	
Work top in 18 ± 1 mm thick White Nano-Glass (grade 7) construction	
750 mm wide 500 mm depth 700±50 mm height storage module with one drawer two shutters- 2 Nos.	
Worktop mounted electrical raceway in GI powder coated construction	
6/16 Amp electrical sockets and 16 Amp one way switch- 6 Nos.	
Back Panel in G.I. Construction- 1 Nos.	
Filler Panel in G.I. Construction- 2 Nos.	
Quantity: 1 No.	
12) Wall-Mounted Storage Cabinet — Size: L 1000 mm x W 350 mm x H 600 mm (each)	



Amritha Sridhar
24/9/25

GI construction, epoxy powder coated; 1 adjustable shelf; double-skin glass doors with locks	
Quantity: 2 Nos.	
13) Exhaust Ducting — PP + FRP round (3 mm + 2 mm)	
Includes bends, reducers, T-connections, supports, flanges, gaskets, nut-bolts, etc.	
Payment as per actual measurement	
Quantity: Length ~37.00 square meters	
14) Laboratory stools (regular size)	
Quantity: 10 Nos	
15) The bidder shall produce all the necessary certifications:	
16) SEFA membership certificate	
17) Third party testing certificate of SEFA 8M-2016 compliance	
18) Third party testing certificate of SEFA-10-2016 compliance Adaptable Laboratory Furniture Systems	
19) ASHRAE membership certificate	
20) Third party testing certificate of type testing in accordance with ASHRAE 110 & SEFA 1	
21) Third party testing certificate of type testing in accordance with EN 14175, Part 3	
22) ISO - 9001:2015 certificate	
23) ISO - 14001:2015 certificate	
24) ISO - 45001:2018 certificate	
25) IGBC membership certificate	
26) BIFMA membership certificate	

Part B
General consideration

Item	remarks
1)The bidder must visit the site and prepare and submit the sketch/drawing for the proposed work within the stipulated time.	
2)The bidder shall furnish the Brochures/Catalogues/Datasheets of all the components that are stated.	
3)The entire work shall be done with all necessary scaffoldings, working platforms, ladders, safety measures etc. The rates quoted shall include all such arrangements and no extra claims shall be entertained in this regard. Hence the exact site conditions, height and working areas shall be clearly assessed by the agency before quoting the tender.	
4)Sample for all the makes shall be produced by the bidder upon request from the client.	
5)The bidder should have experience working with Nano glass (grade G7) mounted on C Frame. The bidder shall furnish photos of previous work carried out at a public sector establishment along with Purchase order.	



Amar Sadeth
24/9/25

6) Factory site visit (online/offline) as per the convenience of the client shall be arranged by the bidder to demonstrate the capacity of the firm to carry out the work.	
7) The bidder shall furnish purchase order of three works carried out in the previous two years at public sector institutes of value over ₹ 70 00 000 or more.	

CHECK LIST OF DOCUMENT REQUIRED

Sr	List of Documents	Enclosed (Yes/No)
1	Brochures/ Catalogues/ Datasheets	
2	BoQ	
3	Statutory Registration Certificates	
4	Tender document duly signed on all pages along with bidders seal	
5	Technical Compliance sheet	
6	Other documents pertaining to technical aspects	
7	Any other document as provided in the Section I: Requirements	

Aman Sodhi
24/9/25



SECTION 3: Specification for Furnishing Laboratory Fume Hoods and chemical storage cabinets at various labs at Chemical Science Block, IISER Thiruvananthapuram, Vithura, Trivandrum

Contents

- I. General
- II. Scope of Work
- III. Technical Specification
- IV. Supply and Installation of Standalone Chemical Storage Cabinets
- V. Instructions for Installation
- VI. Functional Performance Test
- VII. List of Approved Makes

Anura Dabhi
24/9/25



I. GENERAL

1. Summary

This Section specifies requirements for the selection, installation, and testing of laboratory fume hoods. The scope of work includes, but is not limited to, the following:

- A. The installation of all specified accessories such as monitor, cup sinks, petcocks, lighting, electrical, base cabinets, work surfaces, and filler panels.
- B. Internal hoods plumbing and wiring.
- C. The Contractor shall provide all miscellaneous parts and labor required to provide a complete and functioning fume hood.

2. Relevant codes and standards

The following are the primary organizations and standards regarding fume hoods:

- A. OSHA Part 1910.1450. OSHA stands for Occupational Safety and Health Administration. The agency regulations regarding fume hood operation are listed in the Code of Federal Regulations Volume 29 Part 1910.1450. This code addresses several aspects of laboratory design and operation. Regarding hoods, it is primarily concerned with airflow at the face of the hood, monitoring, maintenance and exhaust.
- B. ANSI/ASHRAE 110-1995. Method of Testing Performance of Laboratory Fume Hoods. This standard is published by the American National Standards Institute and the American Society of heating, Refrigerating and Air Conditioning Engineers, Inc. It concerns itself primarily with methods of testing fume hoods to check their operation.
- C. ANSI/AIHA Z9.5. Titled "The American National Standard for Laboratory Ventilation" this standard is published by ANSI and the American Industrial Hygiene Association. It covers a variety of lab ventilation issues including hood monitoring, face velocities and exhaust.
- D. IS 4209, Indian Standard code for Chemical Laboratories- Code of Safety. It generally deals with the factors involving safety, laboratory design for safety, etc.

Amar Sadath
24/9/25



E. NFPA 45. This standard is prepared by the National Fire Protection Association. It recommends hood construction, location, fire protection, specialty hoods, identification, inspection, testing and maintenance and exhaust.

F. SEFA 1.2-1996. SEFA is the Scientific Equipment & Furniture Association. Its publication "Laboratory Fume Hoods Recommended Practices" covers design requirements of hoods, face velocities and testing.

3. Installer qualifications

Fume hoods shall be installed by skilled electricians and mechanics, all of whom are properly trained and qualified for this work. As a minimum, the system must conform to all codes and manufacturers' instructions and recommendations.

4. Submittals

A. CAD Shop Drawings and product data should be furnished including:

- i) Plans, elevations, sections, and details illustrating shop fabrication, field assembly, and installation.
- ii) Size and location of all cutouts.

B. Fume hood data including all components and accessories

- i) Identify all manufacturer standard components with catalog numbers and identify all materials of custom-fabricated items.

C. Monitor manual with calibration instructions

D. Manufacturer's test and certification data

E. Manufacturer's installation manual

F. Owner's Final Inspection: Fume hood FPT documentation to be furnished.

G. Substantial Completion: O&M Manual information to be furnished.

II. SCOPE OF WORK

1. Supply and Installation of fume hoods (both superstructure and under structure cabinets) including worktops based on the specified Make List based on ASHRAE



Amman Badath
24/9/25

110 (American Society of Heating, Refrigeration and Air Conditioning Engineers)
- American Standards for Laboratory fume hood testing and European Standards for fume hood testing.

2. Supply and Installation of fume hood accessories like service outlets/fittings, electrical switches as per the specified make list. Fittings attached to the fume hood superstructure shall be mounted on the front fascia of the hood.
3. Plumbing fixtures mounted on the fume hood super structures shall be pre – plumbed and electrical fixtures shall be pre – wired. All fume hoods to be fitted with electrical control box with motor starter and all the required electronic circuits.
4. Removal of all debris, dirt and rubbish accumulated as a result of installation of the fume hoods leaving the premises clean and orderly.
5. Manufactures should provide data indicating compliance with ASHRAE 110 or BS EN-14175 standards, at least one of the two.

III. SPECIFICATIONS

1. Fume Hood

Standard Fume Hood Performance Requirements: Fume hoods shall be of complete airfoil design to ensure maximum operating efficiency. Foil sections at the front facials of the hood shall minimize eddying of air currents at the hood face and the rear baffle system shall minimize turbulence in the upper portion of the hood interior. All the fume hoods shall be designed for an approximate face velocity of 80 to 100 fpm.

- A. **Type of Fume Hood:** Constant Bypass type Bench Fume Hood
- B. **Overall Dimension:** width ≥ 1800 mm x Depth ≥ 915 mm x Height ≥ 2300 mm
- C. **Inner Dimension:** Width ≥ 1600 mm x Depth ≥ 645 mm x Height ≥ 1200 mm
- D. **Outer Construction/ Super structure:** The super structure shall be double walled construction housing, concealed steel angle frame members of size 45x45x2mm, attaching brackets and remote service fixture valves, constructed using high quality, cold rolled, mild and degreased steel (conforming to IS: 513/ASTM A366).



Amman Sathth
24/9/25

E. Fume hood superstructure consisting of:

- i. Structure frame in 2.0 mm thick GI construction
- ii. Outer panels in 1.2 mm thick GI construction
- iii. The exterior of the structure shall be pre-treated with 8 tank chemical processes and powder coated with highly chemical resistant epoxy Colors having dry film thickness of 70 to 80 microns for chemical resistance, scratch resistance and to prevent rusting.
- iv. The rear part of the fume hood shall have service access for maintenance.
- v. **Inner lining and worktop:** Internal side wall panels shall be fabricated using minimum 6 mm thick liner of high-pressure laminate made by compressing impregnated paper or wood fibre and epoxy, phenolic resin with an opening that provides access to the service piping and valves to facilitate installation and maintenance. The work top shall be made of minimum 20 mm thick Black Natural Granite with a PP cup drain flush with the recessed work surface.
- vi. **Sash:** The sash shall be made of 5 mm thick transparent toughened glass having a breaking stress value of 24,000 psi with a clear openable height of 750 mm and heat resistant. Combination sashes shall be provided. The sash handle should be of type anodized Al construction and should not generate eddies in the plane of the sash opening. It should be thin enough in profile to minimize interference with the line of sight of the fume hood user. The counterbalance mechanism should use a single counterweight, stainless steel wires on ball bearing pulley assemblies. A cable-retaining device should be provided, assembled to prevent tilting of the sash during operation. Spring counterbalance mechanisms are not acceptable. The sash should move easily and quietly and remain in place wherever it is stopped. The sash should open and close against rubber bumper stops, installed so that the user can readily adjust the sash opening when moving the sash from either end. The design should ensure that, in the event of a failure of the counterbalance mechanism, the sash cannot fall within 50 mm of the bottom airfoil. This is in order to avoid the potential for serious injury to the fume hood user.
- vii. **Airfoil:** A streamlined “flip-on” type airfoil shall be integral at the bottom of the hood opening on bench hoods. The horizontal airfoil should be of 1.6 mm stainless steel, type 316 L with Teflon coated, typically

Aman Singh
24/9/25



installed approximately 25 mm above the raised portion of the work surface. It should be designed and installed for eddy-free entry of air into the fume hood. The air should sweep across the work surface, minimizing eddies and lessening the possibility of fumes generated near the front of the fume hood from escaping. Airfoil width should project into the fume hood beyond the plane of the sash. The airfoil should be designed to eliminate reverse flow within 75 mm of the plane of the sash.

- viii. **Baffle:** The baffles shall be fabricated using minimum 6 mm thick liner of high-pressure laminate and should have excellent chemical and heat resistant and fire retardant. At least three slots shall be provided for effective distribution of flow of air which shall be placed at a distance of approximately 5 cm from the back liner and shall be removable for cleaning.
- ix. **Scaffold/Lattice:** A 4x4 height and width adjustable scaffold made of Epoxy rods (minimum 12 mm diameter) shall be provided on to the internal liner clamped with the PP clamps to hold the test samples and rotors within the fume hood.
- x. **Cup Sink:** There shall be provision for water supply with a single valve tap in each fume hood with a high density polypropylene (approx. dimension 80x160 mm) oval shaped cup sink directly below the tap and shall be connected to the existing water inlet as well as drain outlet respectively.
- xi. **Electrical Services:** Lighting fixtures shall be of twin LED type light which are sealed, vapor tight and protected by a transparent, scratch-resistant, shatter-resistant and flame-resistant material. All the electrical switches and sockets (GI construction) shall be positioned outside the fume hood just below the work top. Each fume hood shall necessarily possess minimum six 3-pin electrical sockets (220-240V, 6-16A) and a shunt tripper for the safety control of all the electrical points.
- xii. **Service Valves and Plumbing:** The shut-off valve or cock for the water supply shall be provided outside the fume hood. All the fittings shall be of approved makes. Utility services like Nitrogen, Compressed Air & Potable water shall consist of remote control valves as selected located within the end panels, controlled by in and out facility with flexible hose passing through the side panels of the hood, with color coded PP handles. All gas valves for regular lab gases to have standard needle valve and push and turn type arrangement for all gases to be supplied. All supplied valves to



Aman Sodath
25/9/25

clear the following pressure test conditions: Gas Fittings – 7 bar, Water fittings – 10 bar. Interior fitting for gases and water shall be with polypropylene/epoxy coated forged brass construction 2.0 m long flexible tubing with end fittings for following services:

- xiii. **Digital Face Velocity Monitor:** Fume hoods shall be provided with an alarm system to detect low and high hood face velocities. The alarm system shall indicate the actual face velocity of the hood regardless of sash position. The system shall have an air velocity sensor mounted on the interior side liner of the hood. The velocity monitor shall have a digital display of the air velocity through the hood face in feet per minute. The alarm signals shall activate any time the face velocity falls below the low velocity alarm set point or rises above the high velocity alarm set point. There shall be both visual and audible alarm signals. The audible alarm shall have a mute provision.
- a. Provide fume hood manufacturer's recommended face velocity monitor with a local audible and visual alarm, capable of detecting a drop or rise in airflow (not static pressure) through the hood.
 - b. The monitor shall be digital with a LCD screen.
 - c. All parts of the system which are apt to be in contact with vapors or gases in the fume hood shall be chemically resistant, such as the controller, sensing device, and wiring.
 - d. Provide a means to mute the audible alarm. The silence device shall not turn off the warning light.
 - e. Provide a means for setting the alarm set point to the exhaust level desired. This adjustment shall be "internal" so that it is not readily adjustable by operating personnel.
 - f. The low-level alarm point is 80 feet per minute (fpm) for conventional fume hoods and 56 fpm for low flow fume hoods.
- xiv. **Duct Collar:** A 8"-10" diameter polypropylene duct collar shall be located in the top of the hood plenum chamber.
- xv. **Volume Control Dampers:** Damper sets in PP construction complete with pre drilled flanges on both sides, manual operation handle and extended spindle, suitable for motorized drive.



Amar Zaidi
24/9/25

xvi. **Under Hood Cabinets (General Storage Purpose):** Under hood cabinets of approved makes shall be of double wall construction having an air space of 1 1/2 "throughout using 18-gauge GI/CRCA sheet epoxy coated for chemical resistance, scratch resistance and to prevent rusting. The cabinets shall be provided with leak proof sills to prevent leakage in case of accidental spills. The doors shall be of self-latching mechanism for complete closure with flush mounted locking handles and secured on full length heavy duty piano hinges. Suitable air ducts ready for connection to main exhaust system of the fume hood shall be provided. Adjustable levelling legs shall be provided to place the cabinet on uneven surface. Cabinets should be provided with large illuminating warning label to identify the type of material stored within the unit.

xvii. No fumes leak point should be present when the fume hood is in closed condition.

2. Centrifugal Blower

Silent high efficiency single piece moulded PP blower consisting of continuous rating motor and chemical resistant impeller.

Specifications:

- A. The blower is designed to give a face velocity at safe working height as per the international safe velocity norms. (ANSI/AIHA Z9.5).
- B. The blower body is polypropylene UV treated high density and chemical (corrosion) resistant and is mounted on a metallic stand.
- C. Centrifugal Blower shall meet the following specifications:
 - i. CFM 1900-2300
 - ii. 40 mm WC
 - iii. Drive – 5.0 HP, 2800 RPM
 - iv. 415V, 50 Hz.
 - v. TEFC class B insulation induction motor with IP55 enclosure, in Non-FLP construction.



Anwar Sadath
24/1/25

- D. The exhaust fans supplied and installed shall be of 'Centrifugal Corrosion Resistant' type and shall be capable of delivering the design flow rate against all duct losses.
- E. The fans shall be robust in construction and suitable for continuous duty operation.
- F. The fans shall be mounted with ease of maintenance and shall be installed with proper vibration isolators to minimize vibration transmission to ductwork and support structure. Fans selected shall be silent and vibration free when running and suitable for outdoor use.
- i. **Housings:** PP- Single block strong high-density UV treated with no welded joint. Reversible and rotatable to any 8 standard discharge positions by 45-degree increments. All fan mounting hardware in stainless steel.
 - ii. **Wheels:** PP - Forward curved centrifugal type impeller made, of injection moulded PPH. Fan wheel supplied with hub cap constructed of PPH. Wheels electronically and dynamically balanced to ISO 1940.
 - iii. **Motors** – Direct drive, asynchronous, three phases, IP55. Single speed: three phase 230/400 V-50/60 Hz. Motor is outside the airstream. Three phase motors speed adjustable by variable frequency inverter drive.
 - iv. **Motor Support** – Several options: no stand, metal stand constructed of epoxy coated sheet metal, polypropylene motor pedestal or roof unit kit.
 - v. **Temperature Resistance** – PPH casing and wheel recommended up to 80 °C.
 - vi. **Performance** – Fan performance based on tests conducted in accordance with AMCA 210-85 and ISO 5801.
 - vii. **Warranty** – Equipment to be free from defects in workmanship and material under normal use and service for one year after shipment.
- G. **Exhaust System:** Technical Specifications for PP/FRP Ducting:
- i. **PP means PPGL:** One side smooth & glossy finish and other side is matt finish.
 - ii. The smooth surface should be the inner surface of the duct.

he duct.

- iii. On mat side, FRP lining to be done.
- iv. 25 mm x 25 mm Stitch welding is done on inner surface and continuous welding on outer surface with 5 mm welding thickness.
- v. FRP Lining to be done on the outer surface of PPGL i.e., on mat side.
- vi. One-layer FRP is one mm.
- vii. The final layer should be with fine mat to have smooth and good finish.
- viii. While making the lining, there should not be any air pockets or any sort of uneven finish.

3. Ducting

Rigid Ducting (Round Shape) of PP (Polypropylene) + FRP (Fiber Reinforced Polyester) and flexible ducting complete with necessary flanges, reducers, T-connections, supports, gaskets, bends, damper transitions, clamps, nut bolts etc.

- A. Flexible joint is provided in the ducting in order to avoid transmitting the blower vibrations to the hood.
- B. A weather proof rain cowl is provided at the outlet of blower.
- C. All PP/FRP to be 3+2 mm thick.
- D. In addition, the following points should be also taken into account while fabrication of ducts:
 - i. All ducts of size larger than 450 mm shall be cross broken.
 - ii. All ducts shall be supported from the ceiling / slab by means of MS rods of dia 8mm with MS angle of size 40 x 40 x 5 mm at the bottom with neoprene pad in between the duct & MS angle. The ducts shall be suspended from the ceiling with the help of dash fasteners. Provision for necessary ancillary materials required for hanging the ducts shall be arranged by the contractor.
 - iii. The vanes shall be provided wherever required and shall be securely fastened to prevent noise & vibration.



Anwar Sadath
24/9/25

- iv. The rubber gasket shall be installed between duct flanges in all connections and joints.
- v. All flanges and supports should be primer coated.
- vi. The ducting work can be modified if deemed necessary in consultation with the Engineer in Charge to suit actual site conditions in the building

4. Terms and conditions

- A. Mechanical, electrical, and associated systems shall be safe, reliable, efficient, durable, easily, and safely operable, maintainable, and accessible.
- B. All equipment must be compatible with Indian electrical standards and codes.
- C. **Standard Products:** Material and equipment shall be the standard products of a manufacturer regularly engaged in the manufacture of the products for at least 3 years. Digital electronics devices, software, and systems such as controls, instruments, shall be the current generation of technology and basic design that has a proven satisfactory service record of at least three years.
- D. All items furnished shall be free from defects that would adversely affect the performance, maintainability and appearance of individual components and overall assembly.
- E. Vendor must provide a list of satisfied Indian users and their contact details for using offered items.
- F. Electrical Components and Devices: UL listed and labeled for intended use.

5. Test and Submittals

A. **Manufacturer's Literature and Data:** Include the following:

- i. Illustrations and descriptions of laboratory fume hoods and factory-installed devices for fume hoods.
- ii. Catalog or model numbers for each item incorporated into the work.
- iii. Results of testing according to ASHRAE 110.



Aman Sadath
29/9/25

B. Field Test Reports: Indicate dates and times of tests and certify test results.

C. Factory Test Reports: Provide manufacturer's QC checklist or other reports that indicate comprehensive factory testing has been performed, and the results of these tests have been certified.

6. Testing equipment

Testing equipment must be maintained and calibrated in accordance with manufacturer's specifications and have been calibrated within the past year. Indicate calibration dates and equipment type on test data form.

IV. Supply and Installation of Standalone Chemical Storage Cabinets:

1. Chemical Storage Cabinet

A. **Size WxDxH (mm):** 1000x450x1830

B. Outer body in GI epoxy powder coated construction

C. Inner Skin / Baffles in 5 mm thick PP construction sheet on shelves.

D. Special arrangement for ventilation from each shelf

E. Double skin metallic doors with Lock, Butt Hinges, Positive Catche and SS handles

F. 100 mm diameter. Duct damper in PP construction

2. General Purpose Solvent Storage Cabinet

A. **Size:** L 1200 x D 500 x H 1800 mm

B. Frame 30x30x1.2mm hollow tube

C. Outer body in 1mm GI epoxy powder coated construction

D. Adjustable shelf in 1 mm GI epoxy powder coated construction with stiffer. Minimum 4±1 to be provided.

E. Hinges: SS butt hinges (as per sample approved)

F. Inner Skin / Baffles in 3 mm FRP lining.



Anurag Sadash
24/2/25

H. Lowest platform should have a minimum capacity to bear a load of at least 200 kg

V. INSTRUCTIONS FOR INSTALLATION

Deliver fume hoods to the jobsite, clearly identified in plain view by specifying fume hood manufacturer, size and type of fume hood, sash type and any special features included.

- A. Make all field measurements and verify all dimensions and that required utilities are roughed-in and ready for hook-up prior to installation.
- B. Install fume hood base cabinets plumb and level and parallel to walls and in accordance with manufacturer's instructions.
- C. Install monitors in accordance with manufacturer's instructions.
- D. Adjust sash, fixtures, accessories and other moving or operating parts to function smoothly.
- E. Fume hood Installation shall meet seismic support and anchorage requirements. Coordinate the installation of all supplementary framing and backing plates.

Amara Sadath
24/9/25



- F. Repair or remove defective work upon completion of installation. Touch up as required.

SERVICE	LETTER CODING	COLOUR CODING	Tube construction
Water	DIW	White	PU-4
Compressed Air	AIR	Orange	PU-4
Argon/Nitrogen	A/N	Blue	PU-4

- G. Remove all packing materials, tags, tape, and shipping materials.

3. CLEANING AND PROTECTION

Clean all exposed interior and exterior surfaces and protect from damage by work of other trades.

VI. CONTRACTOR FUNCTIONAL PERFORMANCE TESTING (FPT)

- 1. Pre-test meeting:** The Contractor shall coordinate its FPT activities of fume hoods, including test procedures and FPT documentation, with the Client's confirmation testing activities. This meeting shall include a face velocity test of at least one fume hood by third party with a representative of the department present.
- 2. Contractor face velocity testing shall not start until the following is complete:**
 - A. Pre-test meeting**
 - B. Verification that all specified fume hood components and accessories are provided.**
 - C. Start-up and functional performance testing of all fume hood accessories and utilities is complete and in accordance with manufacturer's specifications.**
 - D. Ceiling tiles are in place and laboratory doors are closed (the space is contained).**

Anwar Sadath
24/9/25



E. For each fume hood, the Contractor shall perform and document the following FPT requirements:

i. **Face velocity**

- a. For conventional flow fume hoods, the target air velocity with the sash height at 18 inches is 100 feet per minute (fpm) \pm 10%.
- b. Face velocity shall be tested using a VelGrid probe by Shortridge instruments, or an anemometer.

ii. **Sound level**

- a. Sound level must be at or below 50 dB measured with the sash height at 18" and the sound level meter located 3 feet from the sash and 5 feet above the floor.
- b. Sound level shall be tested using a Type 2 sound level meter manufactured to meet the American National Standards Institute (ANSI) S1.4 "Standard for Sound Level Meters" capable of measuring decibels in dBA.

iii. **Monitor functionality**

- a. The fume hood monitor is verified to be functioning and properly calibrated.
- b. Verify that the face velocity is displayed.
- c. Raise the sash to reduce the face velocity. Confirm that both the visible and audible alarm signal's function when the velocity drops below 80 fpm.
- d. Test the monitor's mute function and the reset button.
- e. This test fails if the monitor: does not alarm, is more than 10 fpm out of calibration, or if it fails any functional test or is damaged.

F. **Fume Hood FPT Documentation**

Record all test data on FPT data field forms for each fume hood.

3. **FINAL INSPECTION REQUIREMENTS**

Anwar Sadath
24/9/25



- A. The Contractor shall provide EIC ten (10) working days advance notice to schedule Client's fume hood confirmation testing. Include:
- Complete fume hood FPT documentation.
 - For each fume hood type, the manufacturer's installation and operation manual.
 - For each monitor type, the manufacturer's manual with calibration instructions.
- B. The EIC, will review the Contractor's FPT documentation. If the documentation meets the performance requirements of these specifications, then the EIC will conduct confirmation testing of each fume hood in accordance with the Scientific Equipment and Furniture Association (SEFA) standard 1 for face velocity, sound level, monitor functionality. Also, the under hood cabinetry shall be tested in accordance with SEFA 8 standards.
- C. The EIC will notify the Contractor if any fume hoods fail confirmation testing. Any fume hoods that do not meet the performance requirements shall be repaired and re-tested by the Contractor. The Contractor shall submit new FPT documentation for review and additional confirmation testing until each fume hood passes the Departments confirmation testing.
- D. Once the final testing is accepted and complete, the EIC will place appropriate labels on the fume hoods allowing use and this Work shall be substantially complete.

VII. LIST OF APPROVED MAKES:

1. Below mentioned makes to be used unless/otherwise defined in technical Specifications details

STEEL ANGLES:	SAIL, TATA, VIZAG, JINDAL, JSW
GI SHEET:	SAIL, TATA, VIZAG, JSW
LABORATORY FITTINGS:	WATER SAVER, BROEN, BROWNALL LABTAP, PRIMER

Amar Saheli
24/9/25



LABORATORY SINKS/DRIP CUPS:	KLLAB, WATER SAVER, BROEN, PRIMER
ELECTRICAL SOCKET, MCBS:	Highly reputed brands such as LEGRAND, NORTHWEST, MK, NORISYS
EYEWASH/SHOWER:	WATER SAVER, BROEN
HINGES:	Highly reputed brands such as HETTICH, HAFFLE OR EQUIVALENT MAKE FOR APPROVAL
LEGS:	HETTICH, HAFFLE
LOCKS:	Highly reputed brands such as HETTICH, HAFFLE
TELESCOPIC CHANNEL	HETTICH, HAFFLE
WORKTOP	NANO WHITE MARBLE (GRADE G7)
CABLES AND WIRES:	POLYCAB, RR KABLE, FINOLEX
VERIABLE FREQUENCY DRIVES (VFD)	SIEMENS, DANFOSS
ALL OTHER ITEMS NOT COVERED ABOVE	AS PER SAMPLE APPROVED

2. APPROVED MAKE OF MATERIALS FOR FUME HOOD

FUME HOOD SERVICE FIXTURES:	WATER SAVER, BROEN
ELECTRICAL SOCKETS/MCB/RCBO/SUBDISTRIBUTION , BOARDS:	Highly reputed brands such as LEGRAND, NORTHWEST, MK, NORISYS
FACE VELOCITY AND CONTROLS:	TEL, TROX, PHOENIX
CENTRIFUGAL BLOWERS:	SEAT, PRIMER, MK PLASTICS
MOTORS	BHARAT BIJEE, SIEMENS, CROMPTON GREAVES
WORK TOP:	BLACK GRANITE CONST.
VOLUME CONTROL DAMPERS	M K PLASTIC , PRIMER
INNER LINING:	6 MM PHENOLIC RESIN CONST.



Aman Singh
24/9/25

TOUGHENED GLASS:	SAINT GOBAIN, MODI, ASAHI INDIA, GSC, ATUL
LIGHT FITTINGS, LAMPS	PHILIPS, WIPRO, CROMPTON OR EQUIVALENT
CABLES AND WIRES	POLYCAB, RR KABLE, FINOLEX
CABLE MANAGEMENT SYSTEM	LEGRAND, MK, LK, CENTAUR
ALL OTHER ITEMS NOT COVERED ABOVE	AS PER SAMPLE APPROVED

3. General Standards to be followed for Fume hood:

A. Air Flow: Proper air flow at the face of the hood is probably the most common cause of confusion regarding fume hood operation. Here are what the codes and standards say:

OSHA: "General air flow should not be turbulent and should be relatively uniform throughout the laboratory, with no high velocity or static areas; air flow into and within the hood should not be excessively turbulent; hood face velocity should be adequate. (Typically, 60-110 fpm.)"

ANSI/AIHA Z9.5: "Each hood shall maintain an average face velocity of 80-120 fpm with no face velocity measurement more than plus or minus 20% of average."

SEFA: "Face velocities of laboratory fume hoods may be established on the basis of the toxicity or hazard of the materials used or the operations conducted within the fume hood. Note: Governmental codes rules and regulation may require specific face velocities. A fume hood face velocity of 100 fpm is considered acceptable in standard practice. In certain situations, face velocity of up to 125 fpm or as low as 75 fpm may be acceptable to meet required capture velocities of the fume hood."

B. Monitoring/Alarms

OSHA: "each hood should have a continuous monitoring device to allow convenient confirmation of adequate hood performance before use. If this is not possible, work with substances of unknown toxicity should be avoided or other types of local ventilation devices should be provided."

Anush Sabath
24/9/25



ANSI/AIHA Z9.5: "New and remodeled hoods shall be equipped with a flow-measuring device."

NFPA 45: "New and remodelled hoods shall be equipped with a flow-measuring device."

C. Maintenance/Inspection

As with all equipment maintenance is important to proper operation.

OSHA: "Quality and quantity of ventilation should be evaluated on installation, regularly monitored (at least every 3 months), and re-evaluated whenever a change in local ventilation devices is made."

ANSI/AIHA Z9.5: "A routing performance test shall be conducted on every fume hood at least annually or whenever a significant change has been made to the operational characteristics of the system"

NFPA 45: "When installed or modified and as at least annually thereafter, laboratory hoods, laboratory hood exhaust systems, and laboratory special exhaust systems shall be inspected and tested."

NFPA 45: "Special use laboratory hoods and special use local exhaust systems shall be identified to indicate their intended use." "A sign shall be affixed to each hood containing the following information from the last inspection: Inspection interval, Last inspection date, Average face velocity, location of fan that serves hood, Inspector's name. Exception: In lieu of a sign, a properly maintained log of all hoods giving the above information shall be deemed acceptable."

D. Exhaust

ANSI/AIHA Z9.5: "Discharged in manner and location to avoid re-entry into the laboratory building or adjacent buildings at concentrations above 20% of the allowable concentrations inside the laboratory under any wind or atmospheric conditions." Exhaust stack: "Be in a vertical up direction at a minimum of 10 feet above the adjacent roof line as so located with respect to opening and air intakes of the laboratory or adjacent buildings to avoid re-entry."

Anur Zoloth
24/9/25



NFPA 45: "Air exhausted from laboratory hoods and other special local exhaust systems shall not be re-circulated." "Air from laboratory units and laboratory work areas in which chemicals are present shall be continuously discharged throughout systems maintained at a negative pressure relative to the pressure of normally occupied areas of the building."

Amar Zoloth
24/9/25



SECTION 4: Specification for Furnishing Laboratory Fume Hoods and chemical storage cabinets at various labs at Chemical Science Block, IISER Thiruvananthapuram, Vithura, Trivandrum

Contents

- I. General Conditions
- II. Construction Requirements
- III. Specifications
- IV. Quality Assurance and Testing
- V. List of Approved Makes

Amar Sadath
24/9/25



I. GENERAL CONDITIONS

1. Furnishing and installation of laboratory cabinets and furniture for use in laboratory and research facilities including:

E. Side tables, under table cabinets, counter tops, overhead cabinets, and standards in laboratories.

F. Service fixtures and wall plates, sinks, cylinder strap holders.

G. Filler panels, knee space panels, and other items of trim and enclosure.

H. Other miscellaneous items of laboratory cabinets/racks and furniture as listed in these specifications and as shown on drawings and as directed by EIC.

I. Delivery to the building, unpacking, setting in place, levelling, and scribing to walls and floors as required.

2. Reference Standards:

A. IS 4209, Chemical Laboratories- Code of Safety

B. IS 1161, Steel Tubes for Structural Purpose-Specification

C. IS 7138, Specification for Steel Tubes for Furniture Purpose

D. IS 13871, Powder Coating- Specification

E. IS 822, Code of Procedure for Inspection of Welds

F. IS 303, Plywood For General Purpose- Specification

G. IS 5509, Fire Retardant Plywood- Specification

H. Scientific Equipment & Furniture Association (SEFA)

i. SEFA 2.3 Scientific Laboratory Furniture And Equipment

ii. SEFA 3 Work surfaces

iii. SEFA 7 Laboratory and Hospital Fixtures

iv. SEFA 8 for wooden furniture

I. Builders Hardware Manufacturers Association (BHMA)

Aman Sadath
29/9/25



J. National Electrical Manufacturers Association (NEMA) DESIGN REQUIREMENTS

3. **Submittals:** Submit shop drawings showing each assembly, identifying each item, details of construction, thickness of materials, and adjacent construction. Clearly identify any deviations in dimension, material, detail, etc. from conditions shown on the contract documents. Any deviation not clearly identified will be considered disapproved, even if not specifically noted by the EIC.
4. Contractor shall verify field dimensions, and that products of this section will fit through entryways, corridors and door openings enabling a smooth flow of equipment to its proper location in the building.
5. H-frame/angle or any other sections shall be of high quality mild and degreased steel conforming to relevant IS Codes. The H-frame steel section shall be of epoxy powder coated (minimum 60 microns) (conforming to IS-13871) for chemical resistance, scratch resistance and to prevent rusting and having a minimum size as specified in the SOQ/drawings and shall be joined by bead welds (conforming to IS: 822-1970) grinded smooth.
6. Plywood and metal finishes be smooth, hard, chemically resistant, and specifically intended for use in the laboratory environment. Finishes shall show no noticeable affect when subjected to brief exposure by common reagents such as sulphuric acid, hydrochloric acid and acetone.
7. Laboratory cabinets/racks shall have heavy-duty double extension drawer ball slides, stainless steel 304 grade hinges of 180-degree openable, Aluminium anodized grade pulls, removable back panels at base cabinet cupboard units.
8. The work top shall be White Nano-Glass (grade 7) of approved make with/without drain boards of same material on to the space provided in side/island tables and suitable connections shall be made to the already provided drains by means of SW PVC-U pipes schedule 40, totally leak free complete as shown in the drawings and as directed by the EIC.
9. Materials used in the construction of laboratory cabinets/racks and equipment shall be the best of their respective kinds and shall be selected for their specific applications. Methods of construction shall be of proven designs and conform to the latest and best practices for production of durable laboratory cabinets/racks and equipment.

Amar Singh
24/9/25



10. L.H. & R.H. side panel, bottom panel, top panel, back panel, front panel & drawer separator made out of 1 mm thick GI/CRCA sheet epoxy coated for chemical resistance, scratch resistance and to prevent rusting.
11. Toughened glass of minimum thickness 10 mm shall be used for reagent racks supported on frame work of epoxy powder coated steel sections.
12. **Fillers:** Provide where ever required, Factory fabricate fillers of same material and finish as cabinets. Exposed edges shall be lipped/hemmed.
13. Provide access space, cut-outs, and holes for pipes, conduits, and fittings in cabinet bodies to accommodate services and supports.
14. The Contractor shall furnish and deliver all utility service outlet accessory fittings, electrical sockets and switches identified on drawings as mounted on the laboratory furniture.
15. 100 mm high toe space shall be provided.
16. Use concealed fasteners wherever possible. Obtain prior approval for exposed fasteners.
17. Provide access to electrical junction boxes and plumbing valves. Coordinate client and indicate locations and means of access on shop drawings.
18. Provide concealed continuous stiffeners to the underside of any countertop spanning 1.0 m or more.
19. **Built-ins:** Cut/drill openings for fixtures, specialties, accessories, and other built-ins per template/instructions furnished by the manufacturer. Cut/drill openings necessary to accommodate conduit, cable, wiring, and wiring devices. Provide wire access grommets for wire holes in exposed surfaces.
20. **Reagent rack:** Worktop mounted reagent rack in double tier design. Vertical upright and main bracket of the reagent rack shall be in GI/CRCA construction epoxy coated for excellent corrosion resistance. Rack platform shall be in wire reinforced glass / phenolic resin construction. Shelf height shall be adjustable as per requirement.
21. **Electrical fittings:** Such as sockets and switches complete with internal wiring. Fittings shall be mounted on electrical trunk. Electrical Trunking shall be in GI/CRCA construction epoxy coated for excellent corrosion resistance.



Anwar Sadath
25/9/25

22. **Service Fixtures:** Heavy-duty, specially designed and manufactured for laboratory use with provisions for index coding according to EN 13792 shall be used. Fixtures for liquids and gaseous mixtures shall have lettered and colored indexes for each service.
23. Plumbing fixtures, except for drain fixtures and fittings, shall be with PP handles and brass with surface protected by Epoxy Powder Coating, of approved colour and shall have a water flow capacity of around 30 L/min at 3 kg/sq. cm pressure & working temperature range of 0-70°C with test pressure 9 kg/sq. cm & max working pressure of 10 kg/sq. cm.
24. Fixtures are to be supplied with necessary hardware to attach to counter top, curb or panel.
25. Counter top sink of technical ceramic of approved make with or without drain boards of same material shall be provided.

II. CONSTRUCTION REQUIREMENTS

1. Under table cabinet installation: Cabinets shall be located in designated positions, levelled, and plumbed. Each leg assembly shall include minimum two wide base foot screw of 50 mm diameter, adjustable to a range of +23/-5 mm.
2. Install filler panels as required for a continuous tight and accurate fit, without gaps or spaces between cabinets or counters and adjoining surfaces if any.
3. Adjust hardware so that doors and drawers operate smoothly without warp or binding. Lubricate operating hardware as recommend by manufacturer.
4. Install work to plumb, level and true to line and plane as measured from established lines and levels.
5. Counter top lengths shall be finished with beveled as specified and indicated on the drawings. The horizontal surface shall be smooth and level at the joints.
6. Provide holes and cut outs in countertops as required for service fittings and fixtures. Verify actual size of item to be used prior to making openings. After cutting, rout and file cutouts to ensure smooth, crack-free edges. Seal exposed edges/wherever required after cutting with a chemical resistant sealer.
7. Adjusting, Cleaning and Protection:

Anwar Sadath
24/9/25

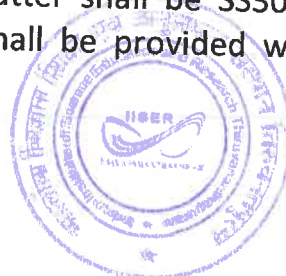


- A. Repair or remove and replace defective or damaged work as acceptable to the EIC at no change in contract amount.
- B. Clean units, including wiping out of drawers and cabinet shelves.
- C. Clean counter tops with diluted dishwashing liquid and water, leaving tops free of grease and streaks. Use no wax or oils.
- D. Protect laboratory cabinets against soiling and deterioration during construction period.

III. SPECIFICATIONS

1. **Island Tables:** Island tables shall be of width & height as per SOQ with H-frame design of high quality mild and degreased steel conforming to relevant IS Codes. The H-frame steel section shall be of epoxy coated (minimum 60 microns) (conforming to IS-13871) for chemical resistance, scratch resistance and to prevent rusting and having a minimum size of 60×40×2.9mm and shall be joined by bead welds (conforming to IS: 822-1970) grinded smooth. Provisions shall be provided for inserting under table storage cabinets and drawers. The work top shall be White Nano-Glass (grade 7) of approved make. Suitable provisions for sink, cup sink, services, pipe lines, etc. shall be provided wherever necessary. The whole work shall satisfy SEFA standards.
2. **Side Tables:** Side tables shall be on frames of high quality, mild and degreased steel conforming to relevant IS Codes. The steel section shall be of epoxy powder coated (minimum 60 microns) (conforming to IS- 13871) for chemical resistance, scratch resistance and to prevent rusting and having a size of 60×40×2.9 mm and shall be joined by bead welds (conforming to IS: 822-1970) grinded smooth. Provisions shall be provided for inserting under table storage cabinets and drawers. The work top shall be White Nano-Glass (grade 7) of approved make. Suitable provisions for sink, services, pipe lines, etc. shall be provided wherever necessary. The whole work shall satisfy SEFA standards.
3. **Under table cabinet and drawer combination:** Under table cabinet and drawer combination shall be consisting of L.H. & R.H. side panel, bottom panel, top panel, back panel, front panel & drawer separator made out of 1 mm thick GI/CRCA sheet epoxy coated for chemical resistance, scratch resistance and to prevent rusting. The hinges for the shutter shall be SS304 grade hinges of 180degree openable. Shutter/drawer shall be provided with epoxy powder

Anwar Sadath
24/9/25



coated recessed sections so as to act as handles flushed with face. Suitable locking arrangement by ball catcher/V catcher shall be provided. The cabinets shall be fixed 100mm above floor level providing a foot space. The ball slide for drawer shall be double extension ball bearing of chromate steel with a load capacity of 45 kg UDL per pair. Suitable locking arrangement of SS grade shall be provided. The intermediate horizontal racks provided in the cabinets as per the drawing shall be provided with height adjustable mechanism. The whole cabinet arrangement shall satisfy SEFA standards and all as per drawing and as directed by EIC.

4. **Reagent Racks:** Two height adjustable reagent racks made out of toughened glass of minimum thickness 10mm with frame work of epoxy powder coated steel sections of RHS 100x50x2mm as support. Suitable duct/trunking made of 1 mm thick GI/CRCA sheet epoxy coated for chemical resistance, scratch resistance and to prevent rusting shall be provided for electrical cable management along with the frame. The whole cabinet arrangement shall satisfy SEFA standards.

5. **Plumbing Fixtures and Others:**

- A. **Technical White Nano-Glass:** Counter top sink shall be of White Nano-Glass (grade 7) of approved make with/without drain boards of same material on to the space provided in side/island tables and suitable connections shall be made to the already provided drains by means of SW PVC-U pipes schedule 40, totally leak free complete as shown in the drawings and as directed by the EIC.
- B. **Polypropylene sink:** Providing and fixing counter top sink of polypropylene of approved make with /without drain boards of same material on to the space provided in side/island tables and making suitable connections to the already provided drains by means of SW PVC-U pipes schedule 40, totally leak free complete as shown in the drawings and as directed by the EIC.
- C. **Eye washer:** Eye washer provided shall be angled double headed type having proper grip for holding, and shall be placed near sink with suitable mount and making suitable connections to the already provided water mains as shown in drawing and as directed by EIC.
- D. **Peg Board:** Drying laboratory rack shall be of high-density polypropylene having at least 54 pegs, each having a length of 125mm and diameter 10mm



Anwar Sadath
24/9/25

with load bearing capacity of minimum 4 kg. Each peg board shall have a drip rack at the bottom with suitable arrangements for draining out.

- E. **Swivelling gooseneck type 3-way water tap:** Pillar type 3way water tap with swivelling GOOSENECK Spout shall be made up of PP Handle & Brass with surface protected by Epoxy Powder Coating, of approved colour and shall have a water flow capacity of around 30 L/min at 3 kg/sq.cm pressure & working temperature range of 0-70°C with test pressure 9 kg/sq.cm & max working pressure of 10 kg/sq.cm. Suitable arrangements shall be provided to connect the tap to the existing water mains by means of CPVC pipes.

6. Electricals

All the electrical switches and sockets shall be positioned just below the lower reagent rack. Each running meter of the island table shall necessarily possess two electrical sockets each (220-240V, 6/16 A, 6 pin with 16 A switch) on either side of the island table. All the sockets shall be wired with 4 sq. mm PVC Sheathed unarmored copper conductor stranded FRLS insulated cable. The switches and sockets shall of one of the approved makes. All the sockets on each table shall be wired from separate MCB enclosure to be mounted on the appropriate position of table. Each power circuit shall be wired maximum for two switchboards.

IV. QUALITY ASSURANCE AND TESTING

1. The contractor shall have a history of successful projects of similar size and complexity.
2. **Single Source Responsibility:** The contractor shall provide complete H-Frame assembly, work top, shelves, storage, service fixtures and accessories as a single responsibility.
3. The contractor shall submit test results for SEFA-3 & 8, as indicated in performance criteria from recognized NABL Third Party testing labs, for a min. of any 2 Cabinets & 2 H- Frames of different respective sizes as listed in the BOQ. The contractor shall at his own expense and at no cost to the department carry out all such tests and inspections of goods and related services as specified here.
4. Whenever the supplier is ready to carry out such tests, reasonable advance notice shall be given to the department.
5. Performance Test Results (Chemical Spot Tests):



Anwar Sadath
24/9/25

A. **Testing Procedure:** Chemical spot tests for non-volatile chemicals shall be made by applying 5 drops of each reagent to the surface to be tested and covering with a 3.2 mm diameter watch glass, convex side down to confine the reagent. Spot tests of volatile chemicals shall be tested by placing a cotton ball saturated with reagent on the surface to be tested and covering with an inverted 60 mL wide mouth bottle to retard evaporation. All spot tests shall be conducted in such a manner that the test surface is kept wet throughout the entire test period, and at a temperature of $25 \pm 1.5^\circ \text{C}$. For both methods, leave the reagents on the panel for a period of one hour. At the end of the test period, the reagents shall be flushed from the surface with water, and the surface scrubbed with a soft bristle brush under running water, rinsed and dried. Volatile solvent test areas shall be cleaned with a cotton swab soaked in the solvent used on the test area. Immediately prior to evaluation, 16 to 24 hours after the reagents are removed, the test surface shall be scrubbed with a damp paper towel and dried with paper towels.

B. Test Evaluation:

Evaluation shall be based on the following rating system:

Level 0 - No detectable change.

Level 1 - Slight change in color or gloss.

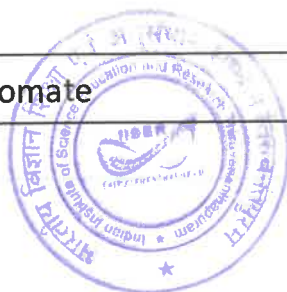
Level 2 - Slight surface etching or severe staining.

Level 3 - Pitting, cratering, swelling, or erosion of coating. Obvious and significant deterioration.

After testing, panel shall show no more than four (4) Level 3 conditions.

Test Reagents

Test No.	Chemical Reagent*	Test Method
1	Amylacetate	Cotton ball & bottle
2	Ethylacetate	Cotton ball & bottle
3	98% acetic acid	Watch glass
4	Acetone	Cotton ball & bottle
5	5% acidic dichromate	Watch glass



Amay Zolte
24/9/25

6	Butanol	Cotton ball & bottle
7	Ethanol	Cotton ball & bottle
8	Methanol	Cotton ball & bottle
9	28% ammonium hydroxide	Watch glass
10	Benzene	Cotton ball & bottle
11	Carbontetrachloride	Cotton ball & bottle
12	Chloroform	Cotton ball & bottle
13	60% Chromic acid	Watch glass
14	Cresol	Cotton ball & bottle
15	Dichloroacetic acid	Cotton ball & bottle
16	Dimethylformamide	Cotton ball & bottle
17	Dioxane	Cotton ball & bottle
18	Diethylether	Cotton ball & bottle
19	37% formaldehyde	Cotton ball & bottle
20	90% Formic acid	Watch glass
21	Furfural	Cotton ball & bottle
22	Gasoline	Cotton ball & bottle
23	37% hydrochloric acid	Watch glass
24	48% hydrofluoric acid	Watch glass
25	3% hydrogen peroxide	Watch glass
26	Iodine tincture	Watch glass
27	Methyl ethyl Ketone	Cotton ball & bottle
28	Methylenechloride	Cotton ball & bottle
29	Monochlorobenzene	Cotton ball & bottle
30	Naphthalene	Cotton ball & bottle
31	20% nitric acid	Watch glass



Amar Sachdev
24/9/25

32	30 % nitric acid	Watch glass
33	70% nitric acid	Watch glass
34	90% phenol	Cotton ball & bottle
35	85% phosphoric acid	Watch glass
36	Saturated silver nitrate	Watch glass
37	10% sodium hydroxide	Watch glass
38	20% sodium hydroxide	Watch glass
39	40% sodium hydroxide	Watch glass
40	Sodium hydroxide flake	Watch glass
41	Saturated sodium sulfide	Watch glass
42	33% sulfuric acid	Watch glass
43	77% sulfuric acid	Watch glass
44	96% sulfuric acid	Watch glass
45	Equal parts 77% sulfuric acid & 70% nitric acid	Watch glass
46	Toluene	Cotton ball & bottle
47	Trichloroethylene	Cotton ball & bottle
48	Xylene	Cotton ball & bottle
49	Saturated zinc chloride	Watch glass

* Where concentrations are indicated, percentages are by weight.

6. Performance Test Results (Heat Resistance):

Hot water (88° C - 96° C) shall be allowed to trickle (with a steady stream at a rate not less than 180 mL per minute) on the finished surface, which shall be set at an angle of 45° from horizontal, for a period of five minutes. After cooling and wiping dry, the finish shall show no visible effect from the hot water treatment.

V. LIST OF APPROVED MAKES

Anurag Sanketh
24/9/25



Below mentioned makes to be used unless/otherwise defined in technical specifications details

Sl. No.	ITEM	MAKES
1	STEEL SECTIONS	SAIL, TATA, OR EQUIVALENT
2	LABORATORY FITTINGS	WATER SAVER, BROEN, BROWN ALL LABTAP, PREMIER POLYMER
3	LABORATORY SINKS/DRIP CUPS	KLLAB, WATER SAVER, BROEN, FRIATEC, PREMIER POLYMER
4	ELECTRICAL SOCKET	LEGRAND/SCHNEIDER/SIEMENS/NORTH-WEST
5	FRLS PVC ISOLATED SINGLE/MULTI CORE STRANDED COPPER CONDUCTOR WIRES/FLEXIBLE WIRES/ARMOURED AND UNARMOURED CABLES	GLOSTER/POLYCAB/FINOLEX/RR KABEL
6	MODULAR (PLATE TYPE) SWITCHES, ELECTRONIC STEP TYPE FAN REGULATOR & POWER, TV, TELEPHONE, & ETHERNET SOCKET (WHITE COLOUR FOR NORMAL AND COLOURED FOR UPS POINTS)	LEGRAND, SIEMENS, MK or Equivalent
7	EYEWASH/SHOWER	WATER SAVER, BROEN, PREMIER POLYMER
8	HINGES	HETTICH, HAFFLE or Equivalent
9	LEGS	HETTICH, HAFFLE
10	LOCKS	HETTICH, HAFFLE
11	DOUBLE EXTENTION BALL SLIDE	HETTICH, HAFFLE
13	WORK TOP	WHITE NANO-GLASS (grade 7)

Anwar Sadath
24/9/25



14	BWP PLYWOOD	GREENPLY, CENTURYPLY, KITPLY
15	GLASS	SAINT GOBAIN, MODI, ASAHI INDIA, GSC, ATUL
16	TECHNICAL CERAMIC	FRIDURIT, MONOLITE IMPERGRESS, KERAPLAN
17	POLYPROPYLENE SINK	AS PER SAMPLE APPROVED

Anwar Sadiq
24/9/25



Annexure -8

(ON COMPANY LETTER HEAD)

Declaration of Local Content

(In case the procurement value is less than or equal to Rs. 10 Crores declaration to be given in Bidder's/Company's letter head and if more than Rs. 10 Crores declaration to be issued from the statutory auditor or cost auditor of the company (in case of companies from a practicing cost accountant or practicing chartered accountant (in respect of suppliers other than companies)

To,
The Director,
Indian Institute of Science Education and Research Thiruvananthapuram,
Maruthamala P.O., Vithura, Thiruvananthapuram, Kerala, India – 695551

Subject: Declaration of local content and compliance of Public Procurement (Preference to Make in India) Order 2017 and its amendments regarding.

Sl No	Name of the goods/service/works	Category of the supplier (Class I / II / III)	Local Content (%)	Location at which value addition is made	Country of Origin	Comply to the above referred rule (Yes / No)
1						
2						
3						

- “Local Content” means the amount of value added in India which shall, be the total value of the item being offered (excluding net domestic indirect taxes) minus the value of the imported content in the item (including all customs duties) as a proportion of the total value, in percent.
- False declarations will be in breach of Code of Integrity under Rule 175(1)(i)(h) of the General Financial Rules for which a bidder or its successors can be debarred for up to two years as per Rule 151(iii) of the General Financial Rules along with such other actions permissible under law.

Date:

Place:

Signature with Date and Stamp of the Bidder



Annexure 9

(ON COMPANY LETTER HEAD)

CERTIFICATE BY THE BIDDER (FOR TENDERS)
(ON COMPANY LETTER HEAD)

I have read the clause regarding restrictions on procurement from a bidder of a country which shares a land border with India. I certify that this bidder is not from such a company or, / if from such a country, has been registered with the Competent Authority (copy of the Registration Certificate enclosed). I hereby certify that this bidder fulfils all requirements in this regard and is eligible to be considered.

Date:

Place:

Signature with Date and Stamp of the Bidder



Annexure _10
CERTIFICATE
(ON COMPANY LETTER HEAD)

I hereby certify that we M/s

_____ (name and address of the firm) is neither blacklisted by any Central/ State Government / Public Undertaking/ Institute nor is any criminal case registered / pending against the firm or its owner / partners anywhere in India.

I also certify that the above information is true and correct in every aspect and in any case at a later date it is found that any details provided above are incorrect, any contract given to the above firm may be summarily terminated and the firm blacklisted.

Date:

Place:

Signature with Date and Stamp of the Bidder



CHECK LIST OF DOCUMENT REQUIRED

<u>Ser</u>	<u>List of documents required</u>	<u>Yes / No</u>
1.	Tender Acceptance Letter as per Annexure 3	
2.	EMD Details	
3.	Brochure/ Catalogue/ Datasheet	
4.	Technical Compliance statement with tender specifications	
5.	BoQ	
6.	Statutory Registration Certificates	
7.	Previous purchase orders (if any)	
8.	Tender document duly signed on all pages along with bidders seal.	
9.	Self-certification regarding local content as per Annexure 8	
10	Declaration of border sharing as per Annexure 9	
11	Declaration for non-blacklisted firm as per Annexure 10	
11	Other documents pertaining to technical aspects	
12.	Any other document as provided in technical specifications	

