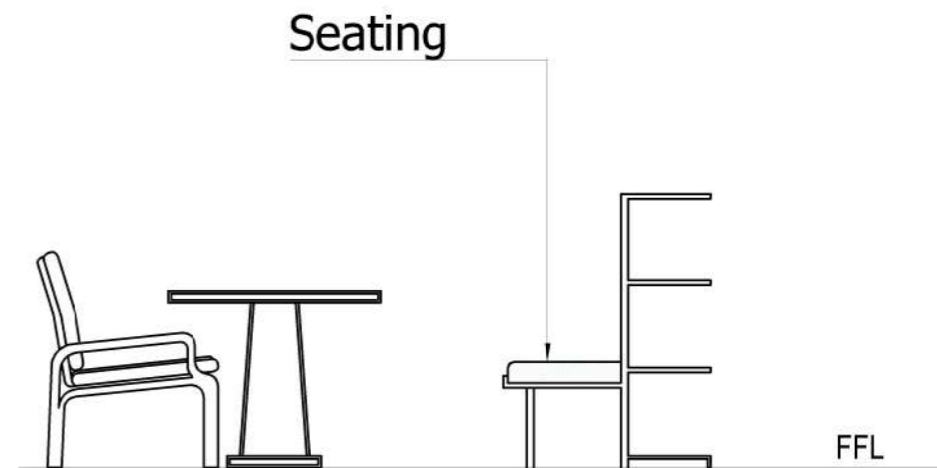
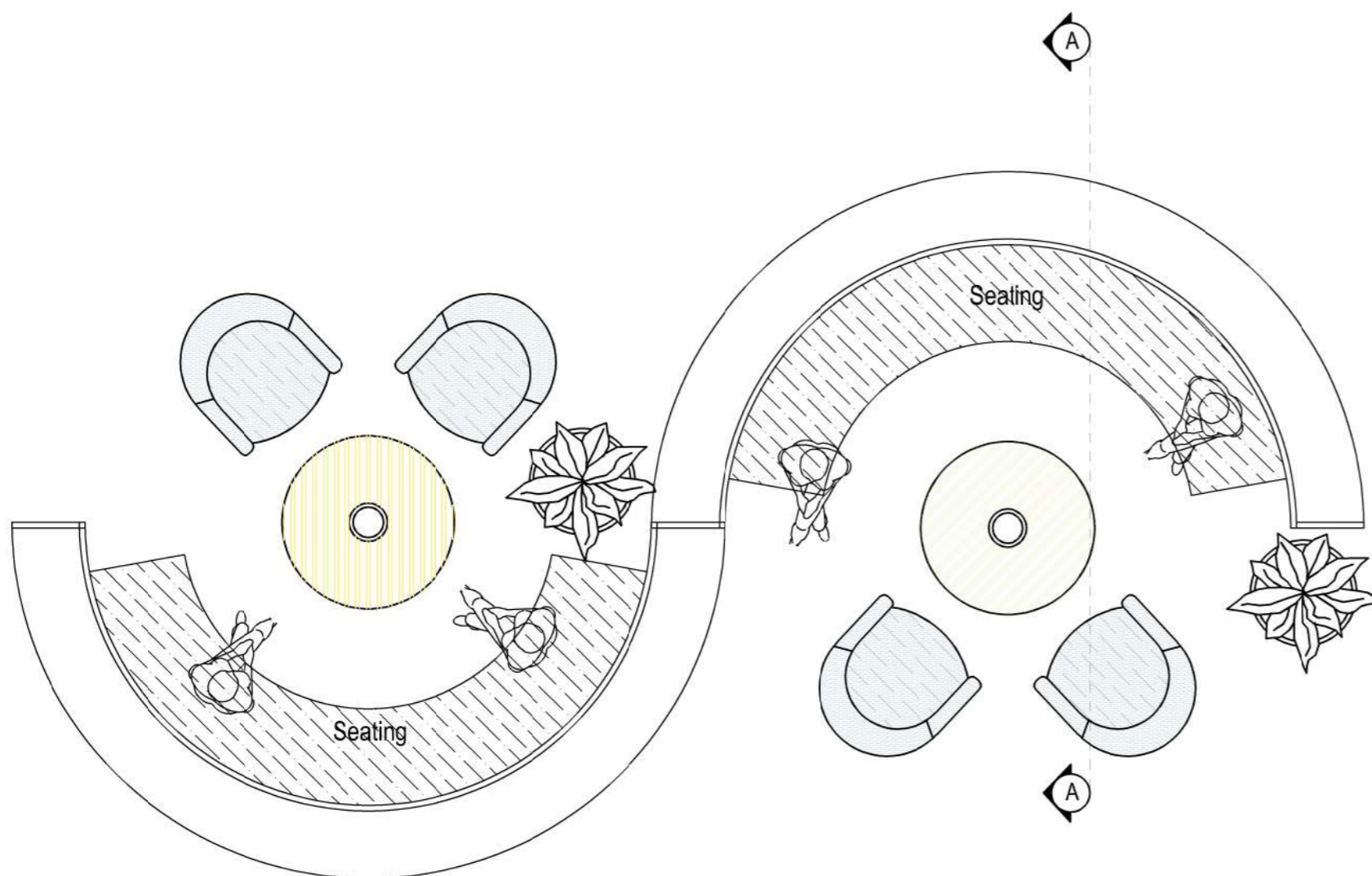




ELEVATION



SECTION AA



PROPOSED INTERIOR DESIGN OF THE CENTRAL LIBRARY AT SECOND FLOOR & THIRD FLOOR OF ADMINISTRATIVE COMPLEX IN IISER THIRUVANANTHAPURAM

Notes:

1. This drawing is the sole property of m/s p.c.rasheed and associates. the rights of reproduction, modification or alteration are reserved by the consultant.
 This drawing is not to be used for any other purpose or any other project.
 2. no dimensions are to be scaled out from the drawing. figured dimensions should be followed.
 3. check all measurements and levels before commencing the work. inform the consultant before starting the construction.

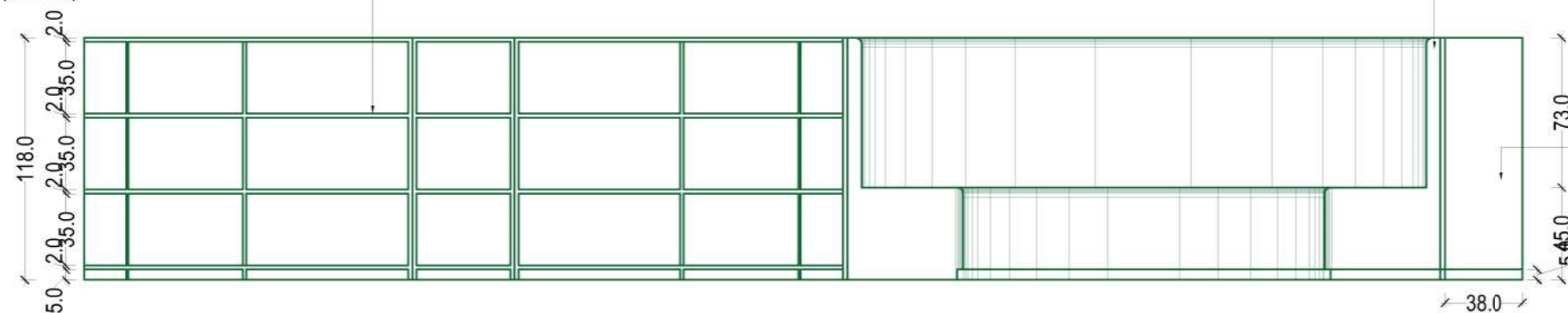
REMARKS:

1. Dimensions are in Meters
 2. Do not scale out the drawing
 3. Columns, Beams sizes as per structural details
 4. Latente for masonry is 20cm thick, unfinished size (The size shown in the drawing)
 5. Plastering thickness 1.5cm (Unless specified)

Consultant:

P.C. RASHEED AND ASSOCIATES.
 WINDHOLE ROAD, THIRUVANANTHAPURAM
 KERALA STATE, INDIA-695001, INDIA
 0471-2528888, 0471-2528889, 0471-2528890
 0471-2528891, 0471-2528892, 0471-2528893
 0471-2528894, 0471-2528895, 0471-2528896
 0471-2528897, 0471-2528898, 0471-2528899
 0471-2528900, 0471-2528901, 0471-2528902
 0471-2528903, 0471-2528904, 0471-2528905
 0471-2528906, 0471-2528907, 0471-2528908
 0471-2528909, 0471-2528910, 0471-2528911
 0471-2528912, 0471-2528913, 0471-2528914
 0471-2528915, 0471-2528916, 0471-2528917
 0471-2528918, 0471-2528919, 0471-2528920
 0471-2528921, 0471-2528922, 0471-2528923
 0471-2528924, 0471-2528925, 0471-2528926
 0471-2528927, 0471-2528928, 0471-2528929
 0471-2528930, 0471-2528931, 0471-2528932
 0471-2528933, 0471-2528934, 0471-2528935
 0471-2528936, 0471-2528937, 0471-2528938
 0471-2528939, 0471-2528940, 0471-2528941
 0471-2528942, 0471-2528943, 0471-2528944
 0471-2528945, 0471-2528946, 0471-2528947
 0471-2528948, 0471-2528949, 0471-2528950
 0471-2528951, 0471-2528952, 0471-2528953
 0471-2528954, 0471-2528955, 0471-2528956
 0471-2528957, 0471-2528958, 0471-2528959
 0471-2528960, 0471-2528961, 0471-2528962
 0471-2528963, 0471-2528964, 0471-2528965
 0471-2528966, 0471-2528967, 0471-2528968
 0471-2528969, 0471-2528970, 0471-2528971
 0471-2528972, 0471-2528973, 0471-2528974
 0471-2528975, 0471-2528976, 0471-2528977
 0471-2528978, 0471-2528979, 0471-2528980
 0471-2528981, 0471-2528982, 0471-2528983
 0471-2528984, 0471-2528985, 0471-2528986
 0471-2528987, 0471-2528988, 0471-2528989
 0471-2528990, 0471-2528991, 0471-2528992
 0471-2528993, 0471-2528994, 0471-2528995
 0471-2528996, 0471-2528997, 0471-2528998
 0471-2528999, 0471-2529000, 0471-2529001
 0471-2529002, 0471-2529003, 0471-2529004
 0471-2529005, 0471-2529006, 0471-2529007
 0471-2529008, 0471-2529009, 0471-2529010
 0471-2529011, 0471-2529012, 0471-2529013
 0471-2529014, 0471-2529015, 0471-2529016
 0471-2529017, 0471-2529018, 0471-2529019
 0471-2529020, 0471-2529021, 0471-2529022
 0471-2529023, 0471-2529024, 0471-2529025
 0471-2529026, 0471-2529027, 0471-2529028
 0471-2529029, 0471-2529030, 0471-2529031
 0471-2529032, 0471-2529033, 0471-2529034
 0471-2529035, 0471-2529036, 0471-2529037
 0471-2529038, 0471-2529039, 0471-2529040
 0471-2529041, 0471-2529042, 0471-2529043
 0471-2529044, 0471-2529045, 0471-2529046
 0471-2529047, 0471-2529048, 0471-2529049
 0471-2529050, 0471-2529051, 0471-2529052
 0471-2529053, 0471-2529054, 0471-2529055
 0471-2529056, 0471-2529057, 0471-2529058
 0471-2529059, 0471-2529060, 0471-2529061
 0471-2529062, 0471-2529063, 0471-2529064
 0471-2529065, 0471-2529066, 0471-2529067
 0471-2529068, 0471-2529069, 0471-2529070
 0471-2529071, 0471-2529072, 0471-2529073
 0471-2529074, 0471-2529075, 0471-2529076
 0471-2529077, 0471-2529078, 0471-2529079
 0471-2529080, 0471-2529081, 0471-2529082
 0471-2529083, 0471-2529084, 0471-2529085
 0471-2529086, 0471-2529087, 0471-2529088
 0471-2529089, 0471-2529090, 0471-2529091
 0471-2529092, 0471-2529093, 0471-2529094
 0471-2529095, 0471-2529096, 0471-2529097
 0471-2529098, 0471-2529099, 0471-2529100
 0471-2529101, 0471-2529102, 0471-2529103
 0471-2529104, 0471-2529105, 0471-2529106
 0471-2529107, 0471-2529108, 0471-2529109
 0471-2529110, 0471-2529111, 0471-2529112
 0471-2529113, 0471-2529114, 0471-2529115
 0471-2529116, 0471-2529117, 0471-2529118
 0471-2529119, 0471-2529120, 0471-2529121
 0471-2529122, 0471-2529123, 0471-2529124
 0471-2529125, 0471-2529126, 0471-2529127
 0471-2529128, 0471-2529129, 0471-2529130
 0471-2529131, 0471-2529132, 0471-2529133
 0471-2529134, 0471-2529135, 0471-2529136
 0471-2529137, 0471-2529138, 0471-2529139
 0471-2529140, 0471-2529141, 0471-2529142
 0471-2529143, 0471-2529144, 0471-2529145
 0471-2529146, 0471-2529147, 0471-2529148
 0471-2529149, 0471-2529150, 0471-2529151
 0471-2529152, 0471-2529153, 0471-2529154
 0471-2529155, 0471-2529156, 0471-2529157
 0471-2529158, 0471-2529159, 0471-2529160
 0471-2529161, 0471-2529162, 0471-2529163
 0471-2529164, 0471-2529165, 0471-2529166
 0471-2529167, 0471-2529168, 0471-2529169
 0471-2529170, 0471-2529171, 0471-2529172
 0471-2529173, 0471-2529174, 0471-2529175
 0471-2529176, 0471-2529177, 0471-2529178
 0471-2529179, 0471-2529180, 0471-2529181
 0471-2529182, 0471-2529183, 0471-2529184
 0471-2529185, 0471-2529186, 0471-2529187
 0471-2529188, 0471-2529189, 0471-2529190
 0471-2529191, 0471-2529192, 0471-2529193
 0471-2529194, 0471-2529195, 0471-2529196
 0471-2529197, 0471-2529198, 0471-2529199
 0471-2529200, 0471-2529201, 0471-2529202
 0471-2529203, 0471-2529204, 0471-2529205
 0471-2529206, 0471-2529207, 0471-2529208
 0471-2529209, 0471-2529210, 0471-2529211
 0471-2529212, 0471-2529213, 0471-2529214
 0471-2529215, 0471-2529216, 0471-2529217
 0471-2529218, 0471-2529219, 0471-2529220
 0471-2529221, 0471-2529222, 0471-2529223
 0471-2529224, 0471-2529225, 0471-2529226
 0471-2529227, 0471-2529228, 0471-2529229
 0471-2529230, 0471-2529231, 0471-2529232
 0471-2529233, 0471-2529234, 0471-2529235
 0471-2529236, 0471-2529237, 0471-2529238
 0471-2529239, 0471-2529240, 0471-2529241
 0471-2529242, 0471-2529243, 0471-2529244
 0471-2529245, 0471-2529246, 0471-2529247
 0471-2529248, 0471-2529249, 0471-2529250
 0471-2529251, 0471-2529252, 0471-2529253
 0471-2529254, 0471-2529255, 0471-2529256
 0471-2529257, 0471-2529258, 0471-2529259
 0471-2529260, 0471-2529261, 0471-2529262
 0471-2529263, 0471-2529264, 0471-2529265
 0471-2529266, 0471-2529267, 0471-2529268
 0471-2529269, 0471-2529270, 0471-2529271
 0471-2529272, 0471-2529273, 0471-2529274
 0471-2529275, 0471-2529276, 0471-2529277
 0471-2529278, 0471-2529279, 0471-2529280
 0471-2529281, 0471-2529282, 0471-2529283
 0471-2529284, 0471-2529285, 0471-2529286
 0471-2529287, 0471-2529288, 0471-2529289
 0471-2529290, 0471-2529291, 0471-2529292
 0471-2529293, 0471-2529294, 0471-2529295
 0471-2529296, 0471-2529297, 0471-2529298
 0471-2529299, 0471-2529300, 0471-2529301
 0471-2529302, 0471-2529303, 0471-2529304
 0471-2529305, 0471-2529306, 0471-2529307
 0471-2529308, 0471-2529309, 0471-2529310
 0471-2529311, 0471-2529312, 0471-2529313
 0471-2529314, 0471-2529315, 0471-2529316
 0471-2529317, 0471-2529318, 0471-2529319
 0471-2529320, 0471-2529321, 0471-2529322
 0471-2529323, 0471-2529324, 0471-2529325
 0471-2529326, 0471-2529327, 0471-2529328
 0471-2529329, 0471-2529330, 0471-2529331
 0471-2529332, 0471-2529333, 0471-2529334
 0471-2529335, 0471-2529336, 0471-2529337
 0471-2529338, 0471-2529339, 0471-2529340
 0471-2529341, 0471-2529342, 0471-2529343
 0471-2529344, 0471-2529345, 0471-2529346
 0471-2529347, 0471-2529348, 0471-2529349
 0471-2529350, 0471-2529351, 0471-2529352
 0471-2529353, 0471-2529354, 0471-2529355
 0471-2529356, 0471-2529357, 0471-2529358
 0471-2529359, 0471-2529360, 0471-2529361
 0471-2529362, 0471-2529363, 0471-2529364
 0471-2529365, 0471-2529366, 0471-2529367
 0471-2529368, 0471-2529369, 0471-2529370
 0471-2529371, 0471-2529372, 0471-2529373
 0471-2529374, 0471-2529375, 0471-2529376
 0471-2529377, 0471-2529378, 0471-2529379
 0471-2529380, 0471-2529381, 0471-2529382
 0471-2529383, 0471-2529384, 0471-2529385
 0471-2529386, 0471-2529387, 0471-2529388
 0471-2529389, 0471-2529390, 0471-2529391
 0471-2529392, 0471-2529393, 0471-2529394
 0471-2529395, 0471-2529396, 0471-2529397
 0471-2529398, 0471-2529399, 0471-2529400
 0471-2529401, 0471-2529402, 0471-2529403
 0471-2529404, 0471-2529405, 0471-2529406
 0471-2529407, 0471-2529408, 0471-2529409
 0471-2529410, 0471-2529411, 0471-2529412
 0471-2529413, 0471-2529414, 0471-2529415
 0471-2529416, 0471-2529417, 0471-2529418
 0471-2529419, 0471-2529420, 0471-2529421
 0471-2529422, 0471-2529423, 0471-2529424
 0471-2529425, 0471-2529426, 0471-2529427
 0471-2529428, 0471-2529429, 0471-2529430
 0471-2529431, 0471-2529432, 0471-2529433
 0471-2529434, 0471-2529435, 0471-2529436
 0471-2529437, 0471-2529438, 0471-2529439
 0471-2529440, 0471-2529441, 0471-2529442
 0471-2529443, 0471-2529444, 0471-2529445
 0471-2529446, 0471-2529447, 0471-2529448
 0471-2529449, 0471-2529450, 0471-2529451
 0471-2529452, 0471-2529453, 0471-2529454
 0471-2529455, 0471-2529456, 0471-2529457
 0471-2529458, 0471-2529459, 0471-2529460
 0471-2529461, 0471-2529462, 0471-2529463
 0471-2529464, 0471-2529465, 0471-2529466
 0471-2529467, 0471-2529468, 0471-2529469
 0471-2529470, 0471-2529471, 0471-2529472
 0471-2529473, 0471-2529474, 0471-2529475
 0471-2529476, 0471-2529477, 0471-2529478
 0471-2529479, 0471-2529480, 0471-2529481
 0471-2529482, 0471-2529483, 0471-2529484
 0471-2529485, 0471-2529486, 0471-2529487
 0471-2529488, 0471-2529489, 0471-2529490
 0471-2529491, 0471-2529492, 0471-2529493
 0471-2529494, 0471-2529495, 0471-2529496
 0471-2529497, 0471-2529498, 0471-2529499
 0471-2529500, 0471-2529501, 0471-2529502
 0471-2529503, 0471-2529504, 0471-2529505
 0471-2529506, 0471-2529507, 0471-2529508
 0471-2529509, 0471-2529510, 0471-2529511
 0471-2529512, 0471-2529513, 0471-2529514
 0471-2529515, 0471-2529516, 0471-2529517
 0471-2529518, 0471-2529519, 0471-2529520
 0471-2529521, 0471-2529522, 0471-2529523
 0471-2529524, 0471-2529525, 0471-2529526
 0471-2529527, 0471-2529528, 0471-2529529
 0471-2529530, 0471-2529531, 0471-2529532
 0471-2529533, 0471-2529534, 0471-2529535
 0471-2529536, 0471-2529537, 0471-2529538
 0471-2529539, 0471-2529540, 0471-2529541
 0471-2529542, 0471-2529543, 0471-2529544
 0471-2529545, 0471-2529546, 0471-2529547
 0471-2529548, 0471-2529549, 0471-2529550
 0471-2529551, 0471-2529552, 0471-2529553
 0471-2529554, 0471-2529555, 0471-2529556
 0471-2529557, 0471-2529558, 0471-2529559
 0471-2529560, 0471-2529561, 0471-2529562
 0471-2529563, 0471-2529564, 0471-2529565
 0471-2529566, 0471-2529567, 0471-2529568
 0471-2529569, 0471-2529570, 0471-2529571
 0471-2529572, 0471-2529573, 0471-2529574
 0471-2529575, 0471-2529576, 0471-2529577
 0471-2529578, 0471-2529579, 0471-2529580
 0471-2529581, 0471-2529582, 0471-2529583
 0471-2529584, 0471-2529585, 0471-2529586
 0471-2529587, 0471-2529588, 0471-2529589
 0471-2529590, 0471-2529591, 0471-2529592
 0471-2529593, 0471-2529594, 0471-2529595
 0471-2529596, 0471-2529597, 0471-2529598
 0471-2529599, 0471-2529600, 0471-2529601
 0471-2529602, 0471-2529603, 0471-2529604
 0471-2529605, 0471-2529606, 0471-2529607
 0471-2529608, 0471-2529609, 0471-2529610
 0471-2529611, 0471-2529612, 0471-2529613
 0471-2529614, 0471-2529615, 0471-2529616
 0471-2529617, 0471-2529618, 0471-2529619
 0471-2529620, 0471-2529621, 0471-2529622
 0471-2529623, 0471-2529624, 0471-2529625
 0471-2529626, 0471-2529627, 0471-2529628
 0471-2529629, 0471-2529630, 0471-2529631
 0471-2529632, 0471-2529633, 0471-2529634
 0471-2529635, 0471-2529636, 0471-2529637
 0471-2529638, 0471-2529639, 0471-2529640
 0471-2529641, 0471-2529642, 0471-2529643
 0471-2529644, 0471-2529645, 0471-2529646
 0471-2529647, 0471-2529648, 0471-2529649
 0471-2529650, 0471-2529651, 0471-

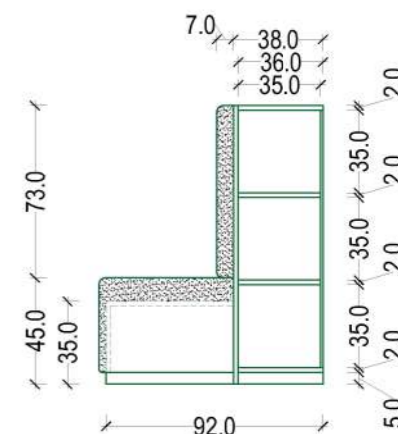
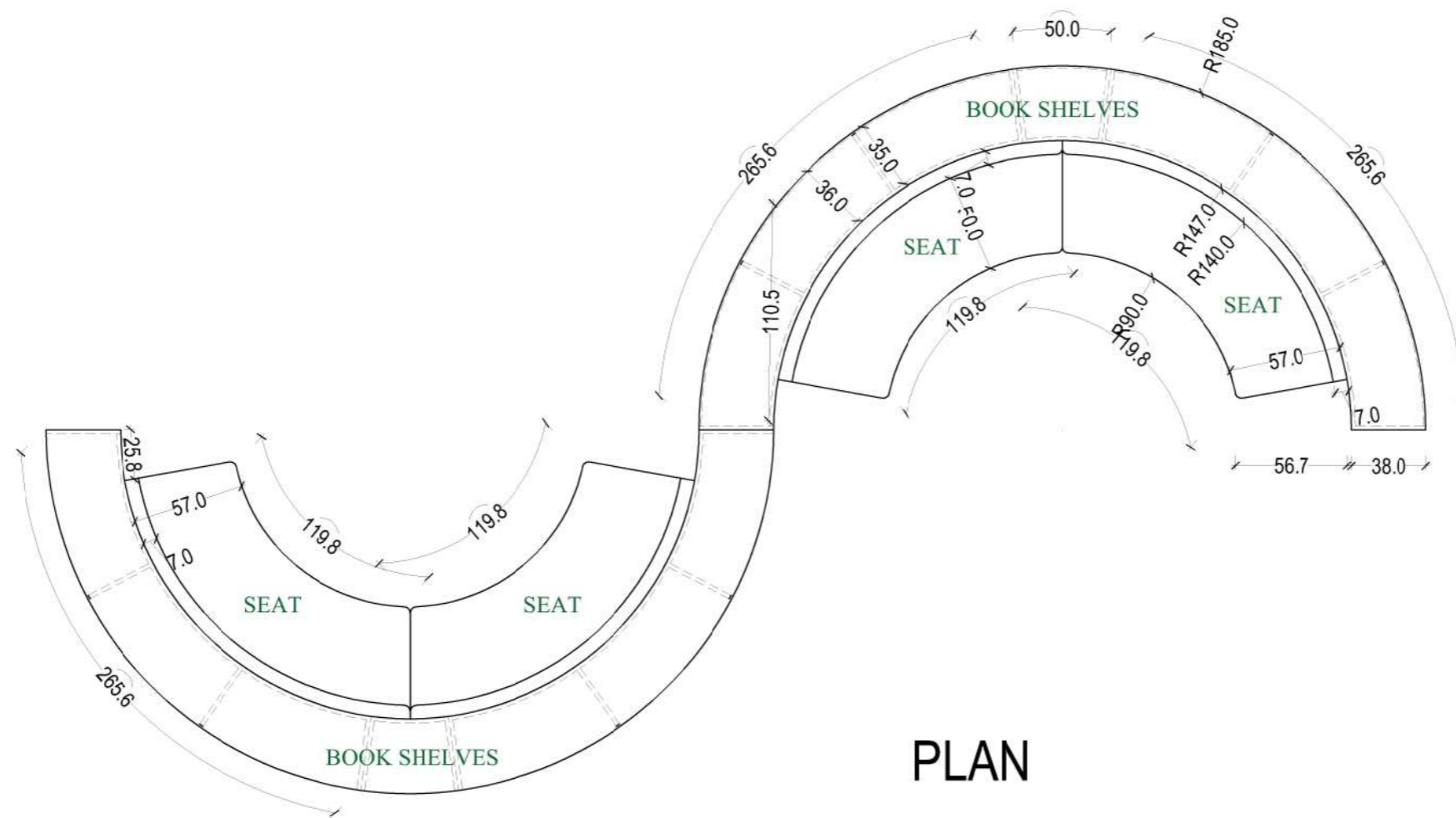
18mm thick marine 710 grade BWP plywood, laminated with 1mm thick mica (633SUD Sunse beech- greenlam), edges treated with 2mm thick pvc edge band 655P (REHAU)



High density foam for cushions, outer covering with art leather (recommended leading brand "Roseli") of colour- Tan.

18mm thick marine 710 grade BWP plywood, laminated with 1mm thick mica (107- SAT wool-greenlam), edges treated with 2mm thick pvc edge band 110207 (REHAU)

ELEVATION



SECTION

PLAN

PROPOSED INTERIOR DESIGN OF THE CENTRAL LIBRARY AT SECOND FLOOR & THIRD FLOOR OF ADMINISTRATIVE COMPLEX IN IISER THIRUVANANTHAPURAM

Notes:

1. This drawing is the sole property of m/s p.c.rasheed and associates. the rights of reproduction, modification or alteration are reserved by the consultant.
2. This drawing is not to be used for any other purpose or any other project.
3. All dimensions are to be scaled out from the drawing. Squared dimensions should be followed.
4. Check all measurements and levels before commencing the work. Inform the consultant before starting the construction.

REMARKS:

1. Dimensions are in Meters
2. Do not scale out the drawing
3. Columns, Beams sizes as per structural details
4. Laterite for masonry is 20cm thick, unfinished size (The size shown in the drawing)
5. Plastering thickness 1.5cm (Unless specified)

Consultant:

P.C. RASHEED AND ASSOCIATES.
 CONSULTANTS & ENGINEERS
 KARAIKUDI ROAD, KACHIPPAZHI, ERNAKULAM P.O.,
 DISTRICT-ERNAKULAM, KERALA
 TEL: 0476-273886, 273887
 EMAIL: p.c.rasheed@pcraa.com, rasheedpcraa@gmail.com
 MOBILE: 9847244444, 9847244443

CHEF CONSULTANT:

Er P.C.ABDUL RASHEED B-Tech,FIIISLA,FIIV.
 REGISTERED ENGINEER-A
 REGN NO CI-3140/2000/69/EA

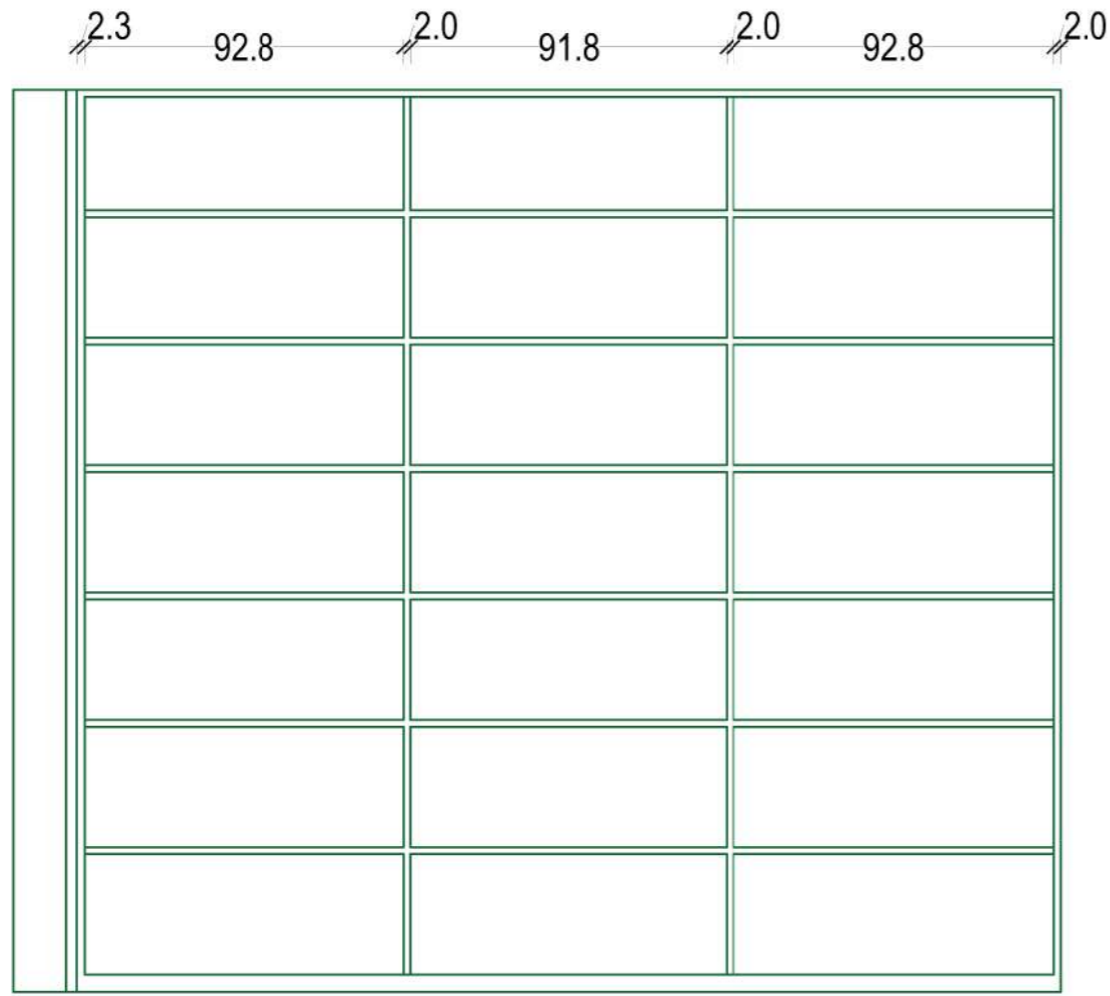
Drawn By:
 Ar. Navaf Muhammed
 Ar. Ridha k
 Er.Treertha T
 Er.Noufan VP

TITLE: S Book shelf cum seating

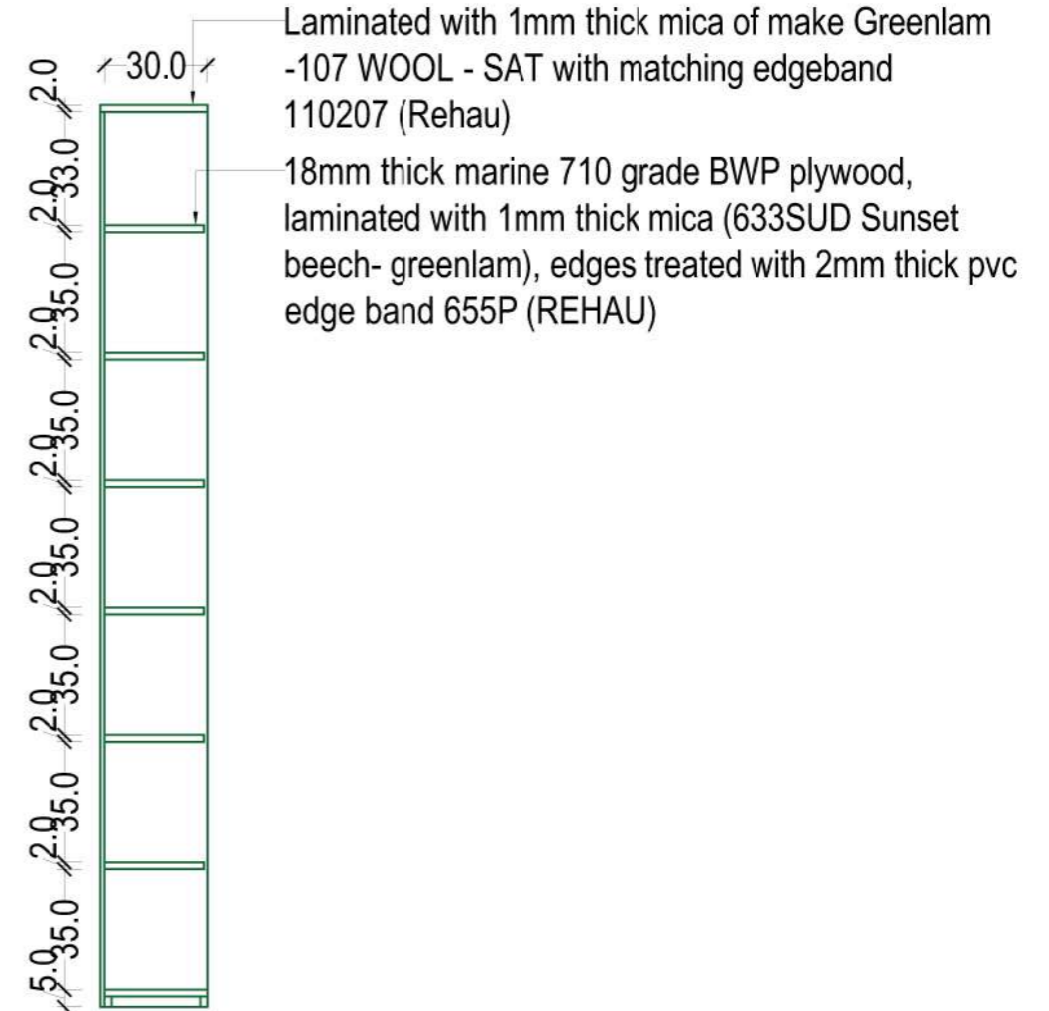
Scale: 1:100 Date: 29/01/2026

CLIENT:
 IISER Thiruvananthapuram

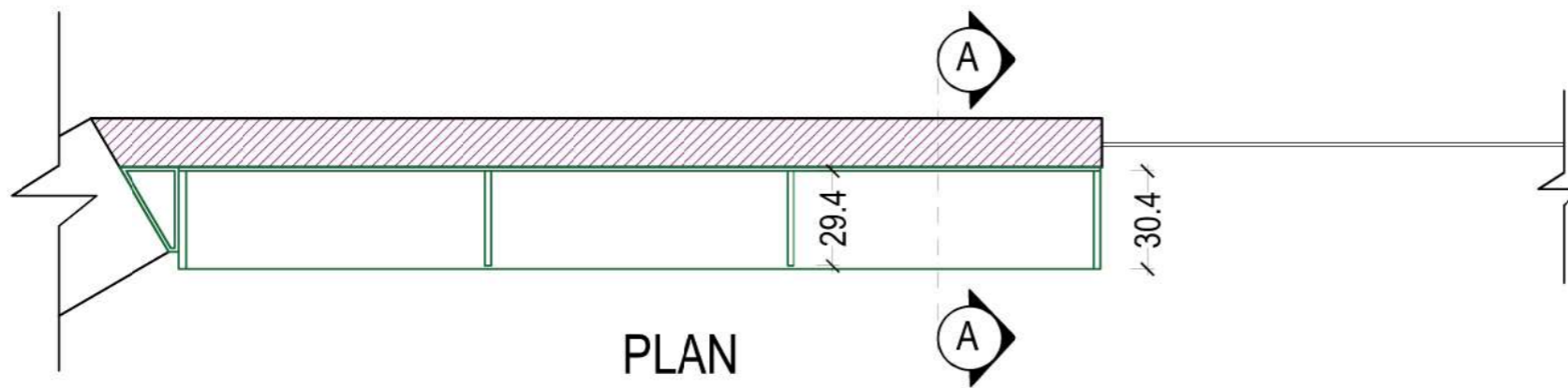
DWG NO.
EDR
02 B



ELEVATION



SECTION AA



PLAN
BOOK SHELF

PROPOSED INTERIOR DESIGN OF THE CENTRAL LIBRARY AT SECOND FLOOR & THIRD FLOOR OF ADMINISTRATIVE COMPLEX IN IISER THIRUVANANTHAPURAM

Notes:
 1. This drawing is the sole property of m/s p.c.rasheed and associates. the rights of reproduction, modification or alteration are reserved by the consultant.
 2. This drawing is not to be used for any other purpose or any other project.
 3. No dimensions are to be scaled out from the drawing. Squared dimensions should be followed.
 4. Check all measurements and levels before commencing the work. Inform the consultant before starting the construction.

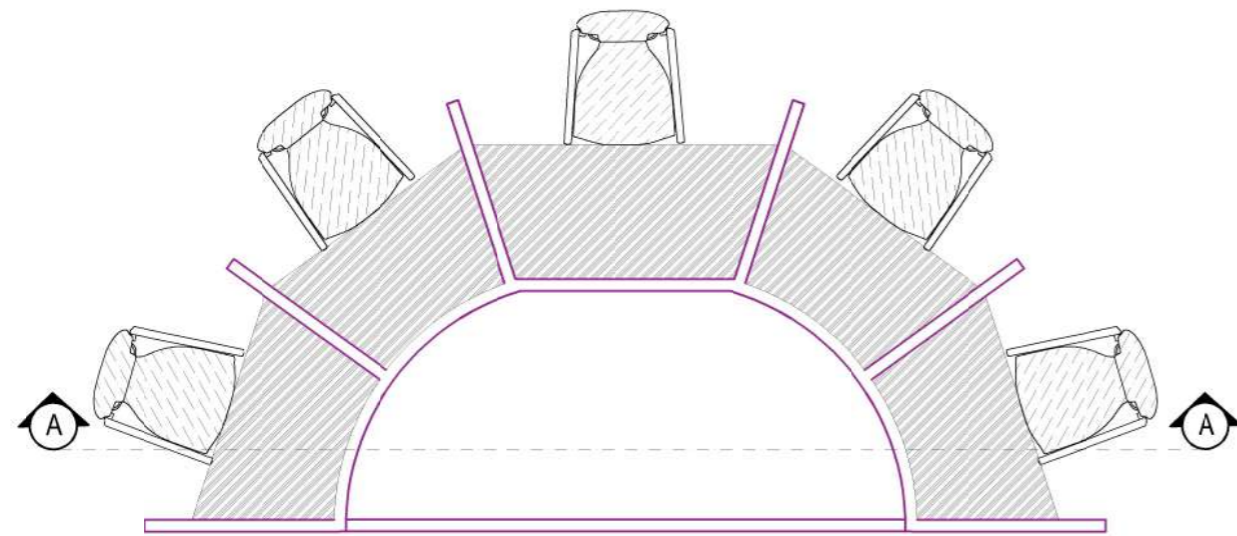
REMARKS:
 1. Dimensions are in Meters
 2. Do not scale out the drawing
 3. Columns, Beams sizes as per structural details
 4. Latelite for masonry is 20cm thick, unfinished size (The size shown in the drawing)
 5. Plastering thickness 1.5cm (Unless specified)

Consultant:
P.C. RASHEED AND ASSOCIATES.
 ENGINEERS & ARCHITECTS
 Karthar, Topal, Kanchibana, Ernakulam P.O.,
 Dist:Kochi-682016, Kerala
 Email: pcrasheedandassociates@gmail.com
 pcrasheed@pccra.com
 Mob: 91 9895866641, 91 9897666641

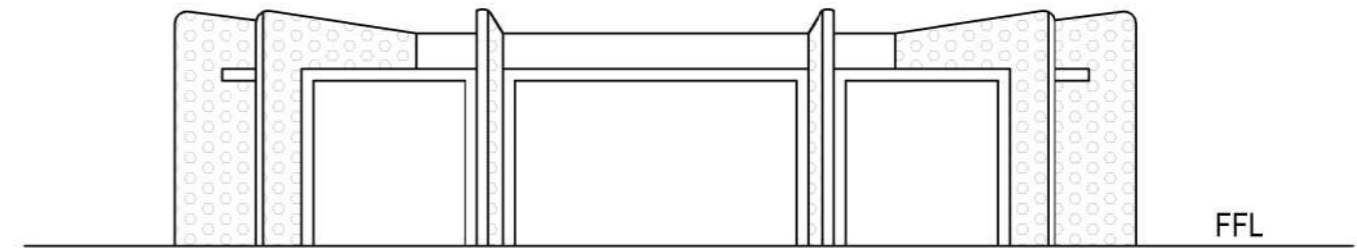
CHEF CONSULTANT:
Er P.C.ABDUL RASHEED B-Tech,FIIISLA,FIIV.
 REGISTERED ENGINEER-A
 REGN NO CI-3140/2000/69/EA

Drawn By:
 Ar. Naval Muhammed
 Ar. Ridha k
 Er.Treetha T
 Er.Noufan VP
CLIENT:
 IISER Thiruvananthapuram
TITLE: LINEAR BOOKSHELF 2
Scale: 1:100
Date: 29/01/2026

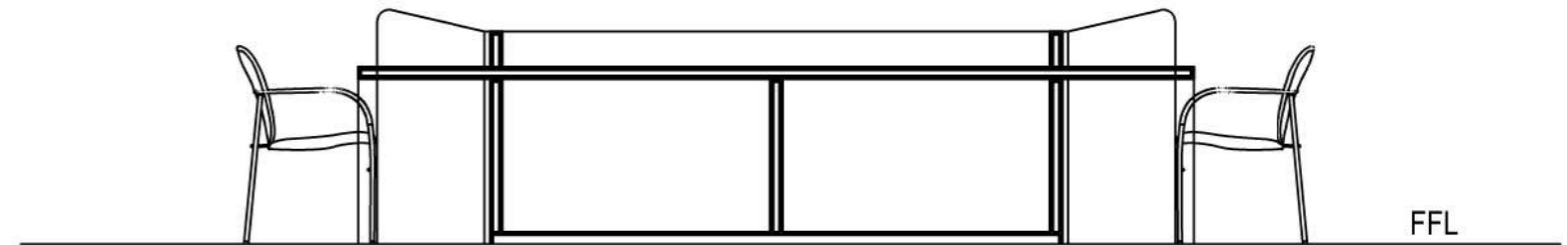
DWG NO.
EDR
03



PLAN



ELEVATION



SECTION AA

PROPOSED INTERIOR DESIGN OF THE CENTRAL LIBRARY AT SECOND FLOOR & THIRD FLOOR OF ADMINISTRATIVE COMPLEX IN IISER THIRUVANANTHAPURAM

Notes:

1. This drawing is the sole property of m/c p.c.rasheed and associates, the rights of reproduction, modification or alteration are reserved by the consultant.
 2. This drawing is not to be used for any other purpose or any other project.
 3. No dimensions are to be scaled out from the drawing, figured dimensions should be followed.
 4. Check all measurements and levels before commencing the work. Inform the consultant before starting the construction.

REMARKS:

1. Dimensions are in Meters
 2. Do not scale out the drawing
 3. Columns, Beams sizes as per structural details
 4. Latente for masonry is 20cm thick, unfinished size (The size shown in the drawing)
 5. Plastering thickness 1.5cm (Unless specified)

Consultant:

P.C. RASHEED AND ASSOCIATES.
 P. C. RASHEED & ASSOCIATES
 20/10/2014, Kachalappu, Ernakulam P.O.,
 682016 Kerala
 Email: p.c.rasheedandassociates@gmail.com
 p.c.rasheed@p.c.rasheed.com
 Mobile: 9847244443, +91 9847244443

CHEF CONSULTANT:

Er P.C.ABDUL RASHEED B-Tech,FIJISLA,FIIV.
 REGISTERED ENGINEER-A
 REGN NO CI-3140/2000/69/EA

Drawn By:

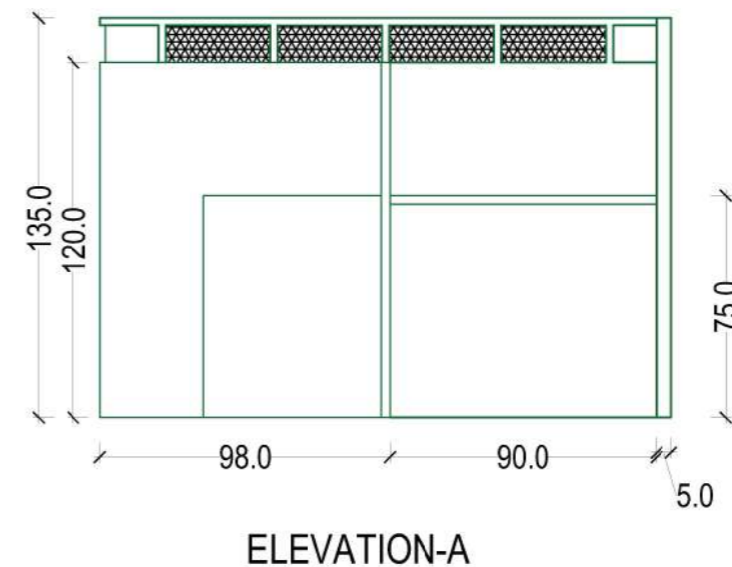
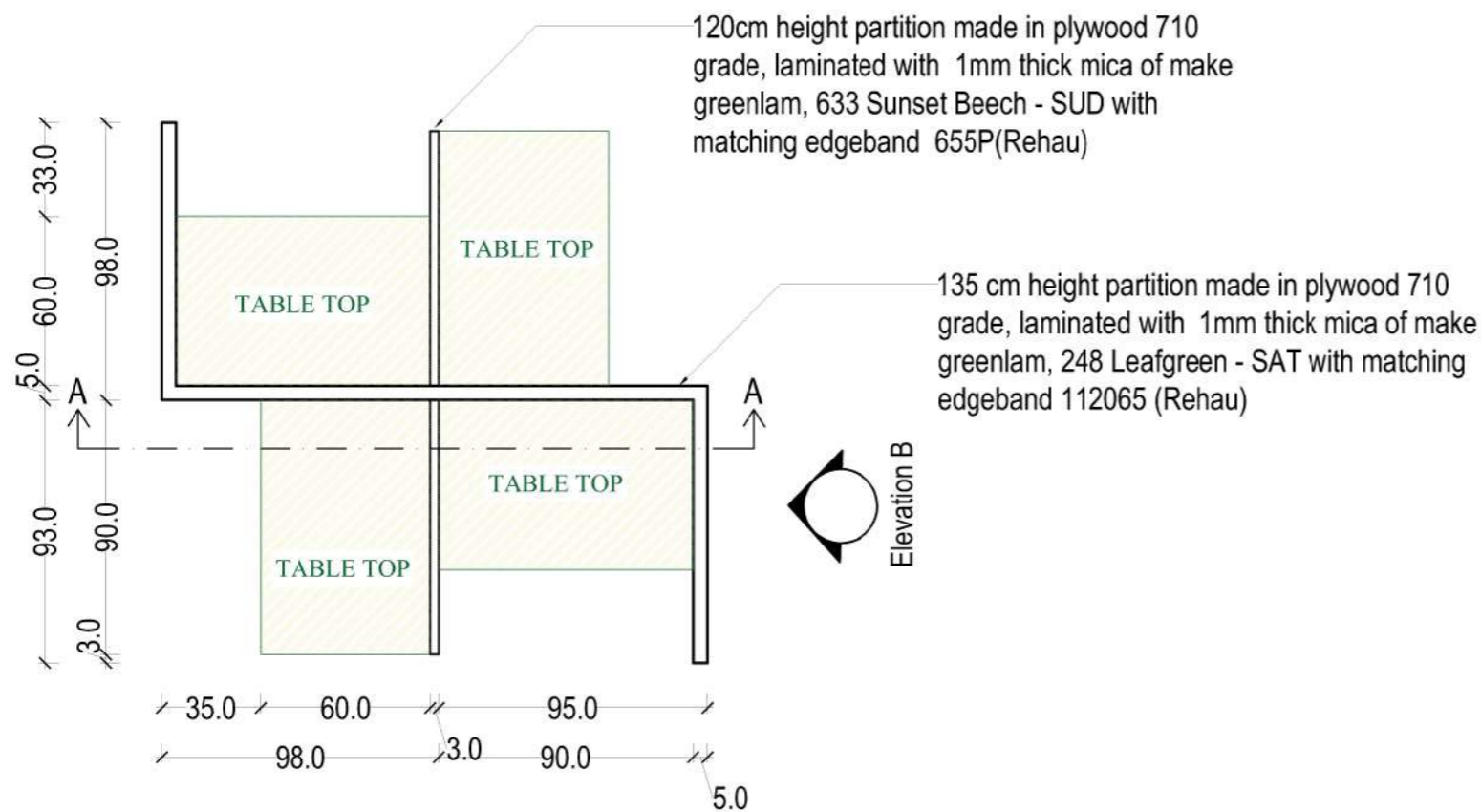
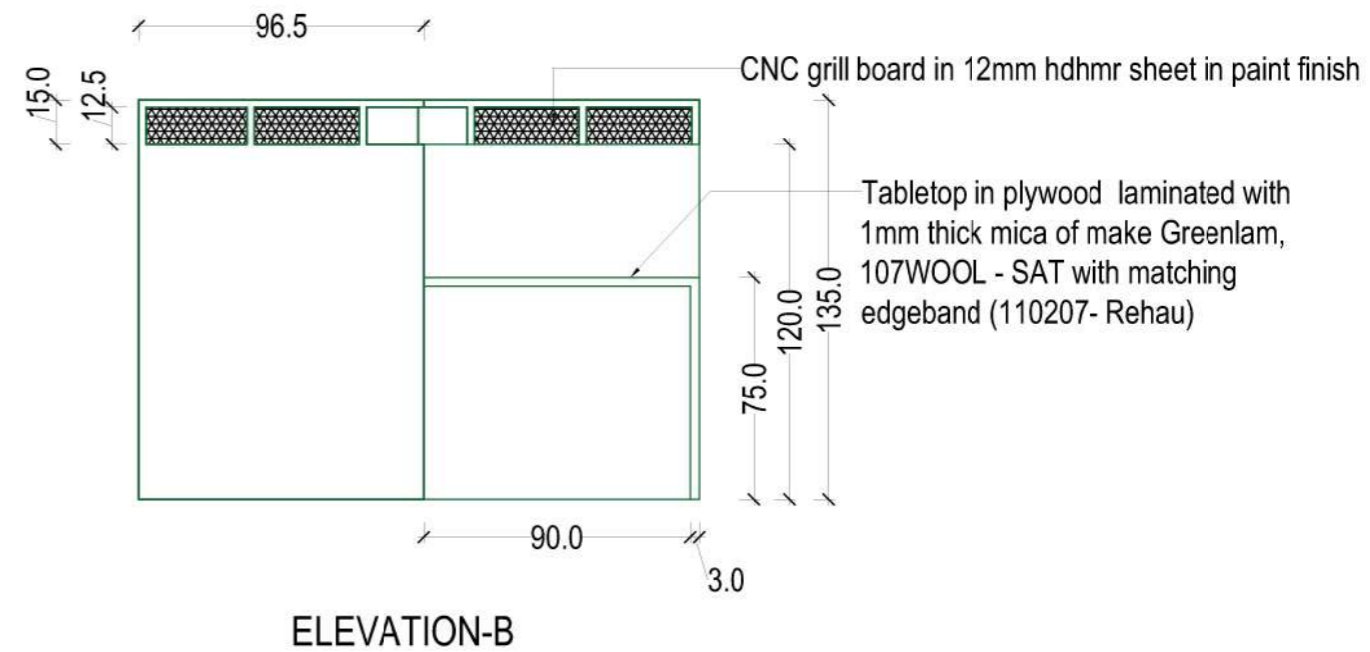
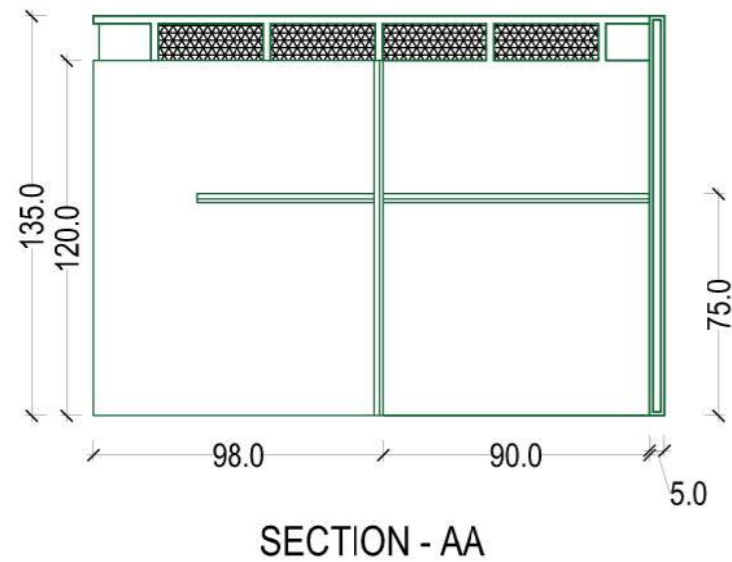
Ar. Navaf Muhammed
 Ar. Ridha k
 Er.Treertha T
 Er.Noufan VP

TITLE: SEMI-CIRCLE TABLE

Scale: 1:100 Date: 29/01/2026
 CLIENT: IISER Thiruvananthapuram

DWG NO.

EDR
04 A



PLAN

120cm height partition made in plywood 710 grade, laminated with 1mm thick mica of make greenlam, 633 Sunset Beech - SUD with matching edgeband 655P(Rehau)

135 cm height partition made in plywood 710 grade, laminated with 1mm thick mica of make greenlam, 248 Leafgreen - SAT with matching edgeband 112065 (Rehau)

Elevation B

PROPOSED INTERIOR DESIGN OF THE CENTRAL LIBRARY AT SECOND FLOOR & THIRD FLOOR OF ADMINISTRATIVE COMPLEX IN IISER THIRUVANANTHAPURAM

Notes:

1. This drawing is the sole property of m/s p.c.rasheed and associates. The rights of reproduction, modification or alteration are reserved by the consultant. This drawing is not to be used for any other purpose or any other project.
2. All dimensions are to be scaled out from the drawing. Squared dimensions should be followed.
3. Check all measurements and levels before commencing the work. Inform the consultant before starting the construction.

REMARKS:

1. Dimensions are in Meters
2. Do not scale out the drawing
3. Columns, Beams sizes as per structural details
4. Latente for masonry is 20cm thick, unfinished size (The size shown in the drawing)
5. Plastering thickness 1.5cm (Unless specified)

Consultant:

P.C. RASHEED AND ASSOCIATES.
REGISTERED ENGINEER - A
 REGN NO CI-3140/2000/69/EA

CHEF CONSULTANT:

Er P.C.ABDUL RASHEED B-Tech,FIIISLA,FIIV.
 REGISTERED ENGINEER-A
 REGN NO CI-3140/2000/69/EA

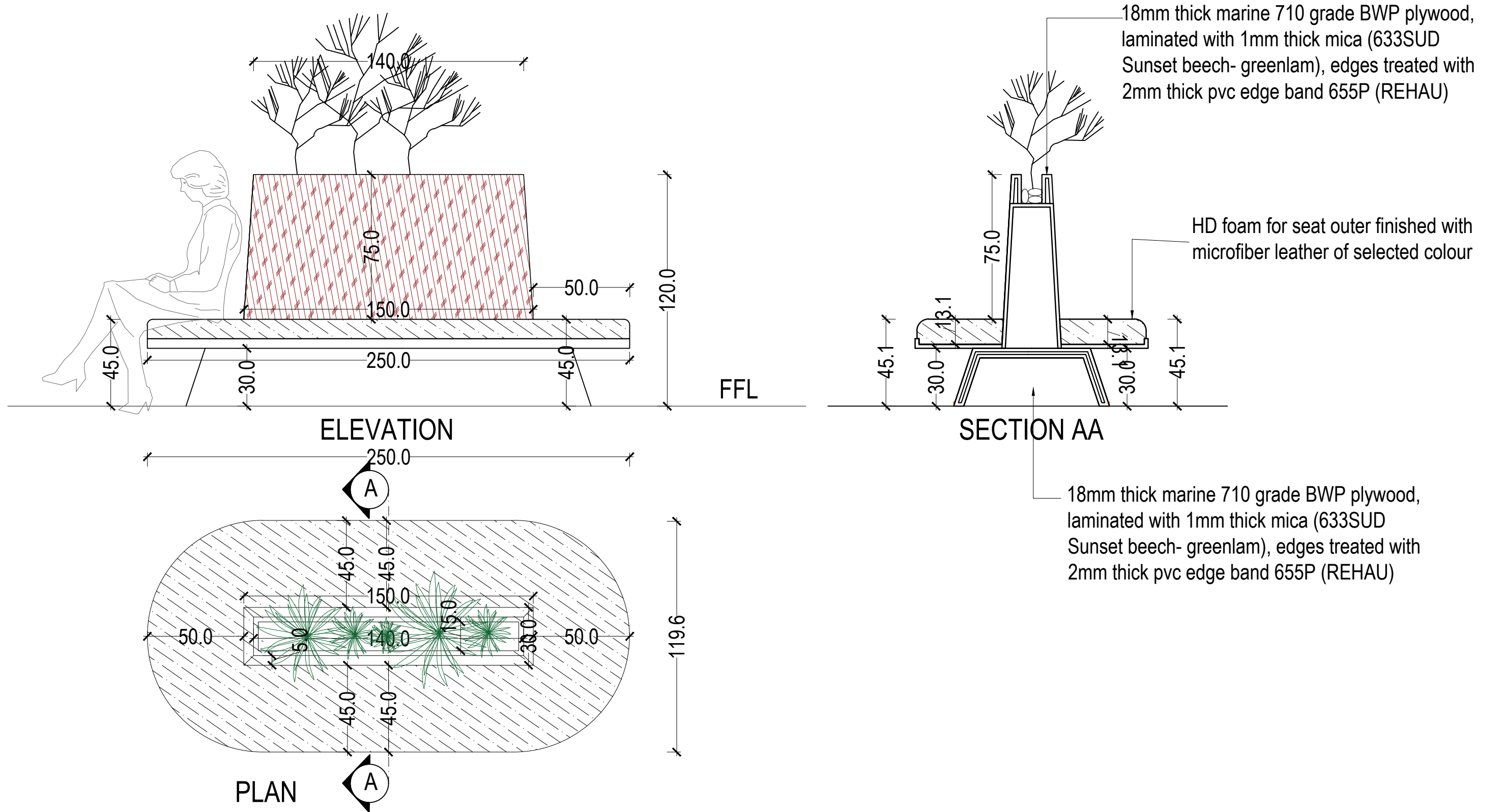
Drawn By:
 Ar. Navaf Muhammed
 Ar. Ridha k
 Er.Treetha T
 Er.Noofan VP

TITLE: STUDY CUBICLE

Scale: 1:100
 Date: 29/01/2026

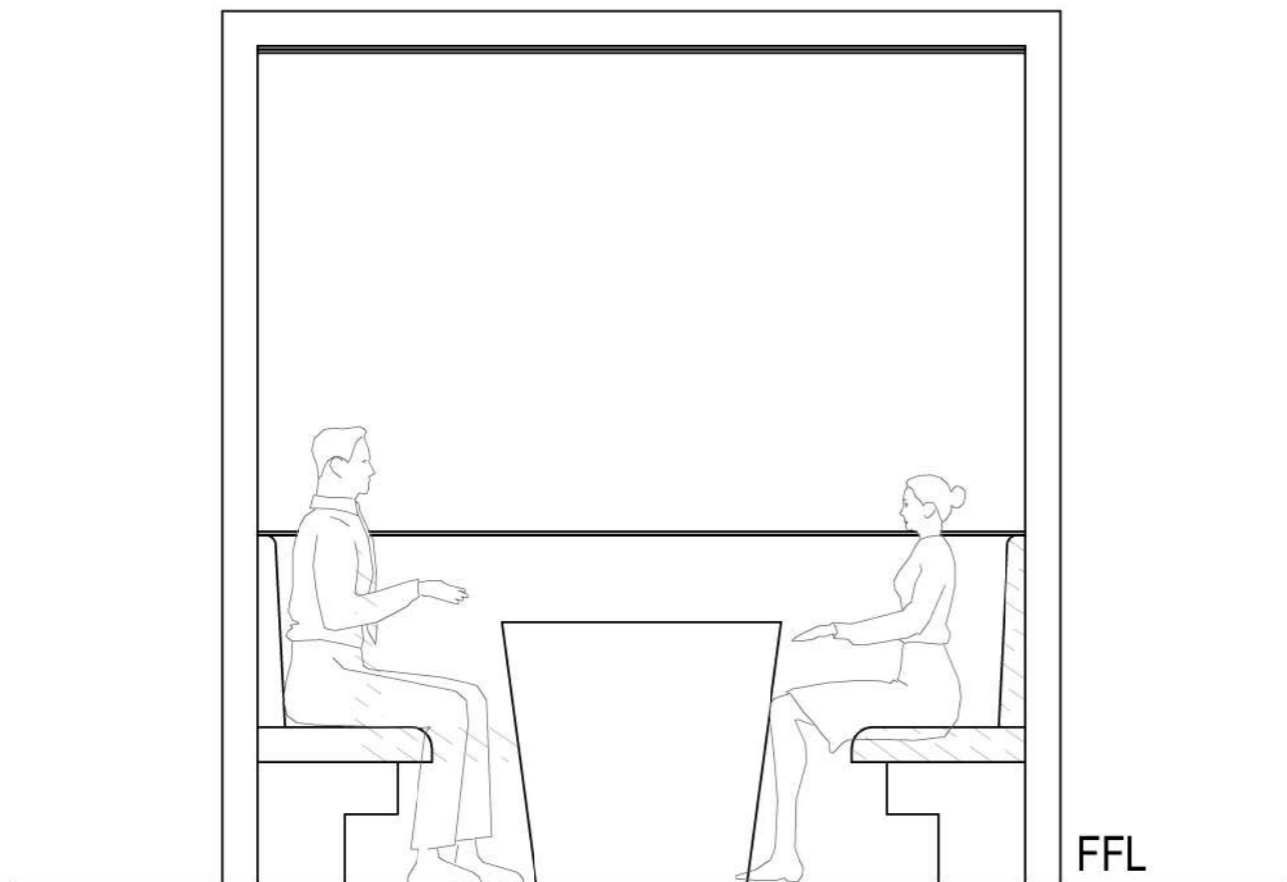
CLIENT:
 IISER Thiruvananthapuram

DWG NO.
EDR
05

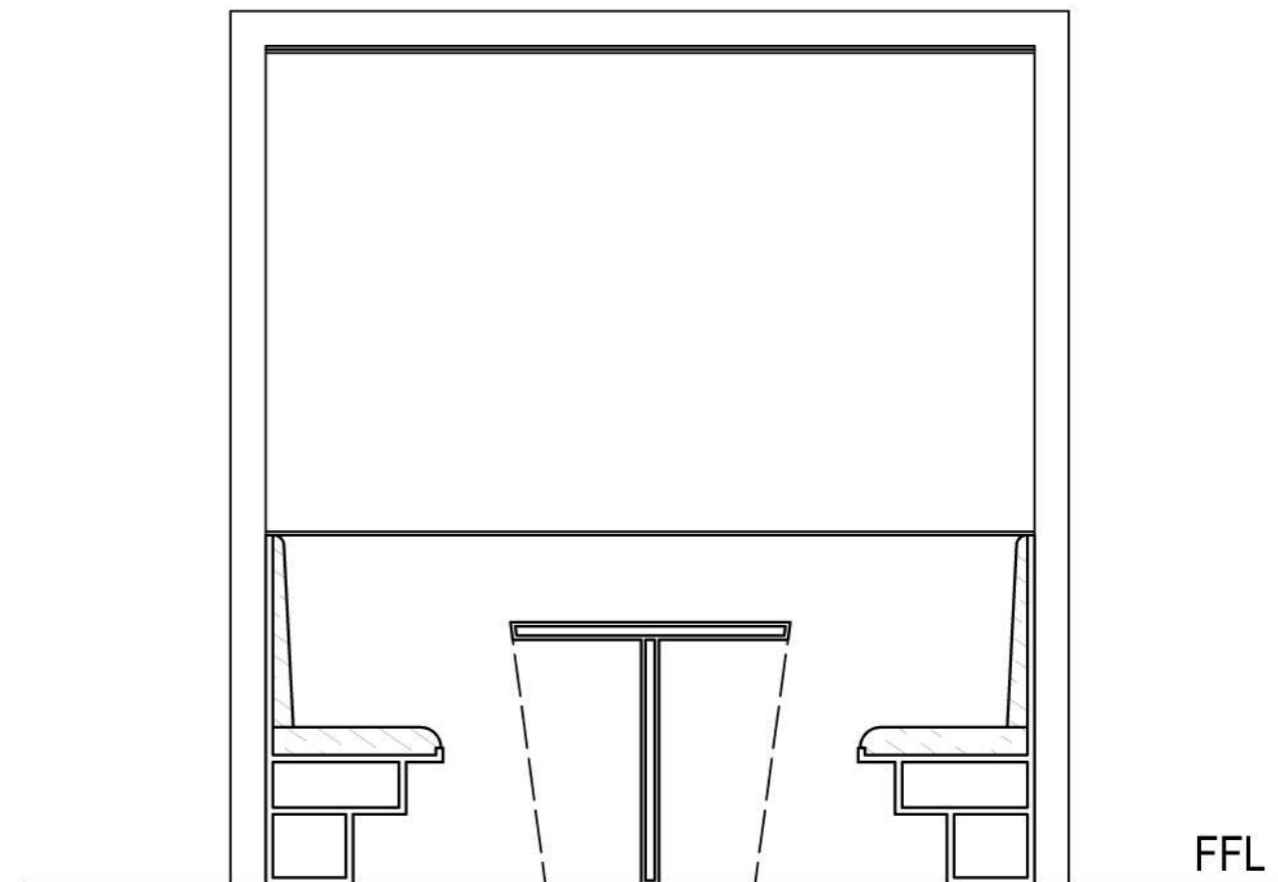


PROPOSED INTERIOR DESIGN OF THE CENTRAL LIBRARY AT SECOND FLOOR & THIRD FLOOR OF ADMINISTRATIVE COMPLEX IN IISER THIRUVANANTHAPURAM

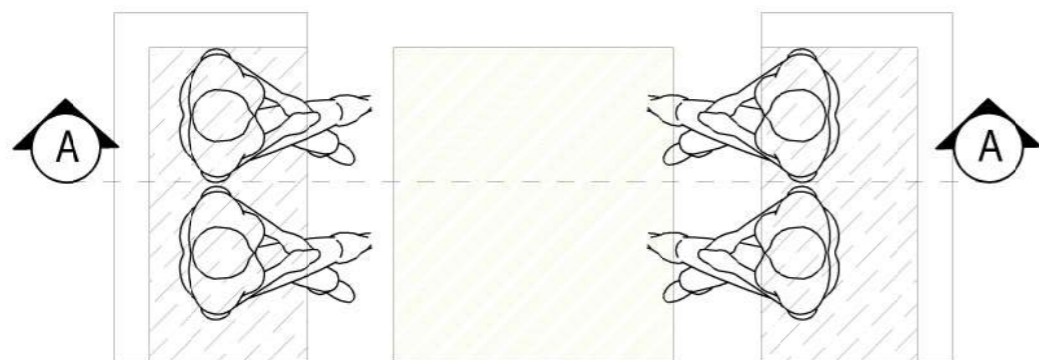
<p>Notes:</p> <ol style="list-style-type: none"> This drawing is the sole property of m/s p.c.rasheed and associates, the rights of reproduction, modification or alteration are reserved by the consultant. This drawing is not to be used for any other purpose or any other project. no dimensions are to be scaled out from the drawing, figured dimensions should be followed. check all measurements and levels before commencing the work intimate the consultant before starting the construction. 	<p>REMARKS:</p> <ol style="list-style-type: none"> Dimensions are in Meters Do not scale out the drawing Columns, Beams sizes as per structural details Laterite for masonry is 20cm thick, unfinished size (The size shown in the drawing) Plastering thickness 1.5cm (Unless specified) 	<p>Consultant: P.C. RASHEED AND ASSOCIATES.</p> <p><small>REGD OFFICE: 10/1, KALATHUR, KANNUR DISTRICT, KERALA</small></p> <p><small>CONTACT: 9447814464</small></p>	<p>CHIEF CONSULTANT: Er P.C.ABDUL RASHEED B-Tech,FIISLA,FIIV. REGISTERED ENGINEER-A REGN NO CI-3140/2000/69/EA</p>	<p>Drawn By: Ar. Naval Muhammed Ar. Ridha K Er.Theertha T Er.Noufan VP</p>	<p>TITLE: SEATING CLUSTER</p>	<p>DWG NO. EDR 06</p>
				<p>CLIENT: IISER Thiruvananthapuram</p>	<p>Scale: 1:100</p>	



ELEVATION



SECTION AA



PLAN

PROPOSED INTERIOR DESIGN OF THE CENTRAL LIBRARY AT SECOND FLOOR & THIRD FLOOR OF ADMINISTRATIVE COMPLEX IN IISER THIRUVANANTHAPURAM

Notes:
 1. This drawing is the sole property of m/s p.c.rasheed and associates. the rights of reproduction, modification or alteration are reserved by the consultant.
 2. This drawing is not to be used for any other purpose or any other project.
 3. no dimensions are to be scaled out from the drawing. figured dimensions should be followed.
 4. check all measurements and levels before commencing the work. inform the consultant before starting the construction.

REMARKS:
 1. Dimensions are in Meters
 2. Do not scale out the drawing
 3. Columns, Beams sizes as per structural details
 4. Laterite for masonry is 20cm thick, unfinished size (The size shown in the drawing)
 5. Plastering thickness 1.5cm (Unless specified)

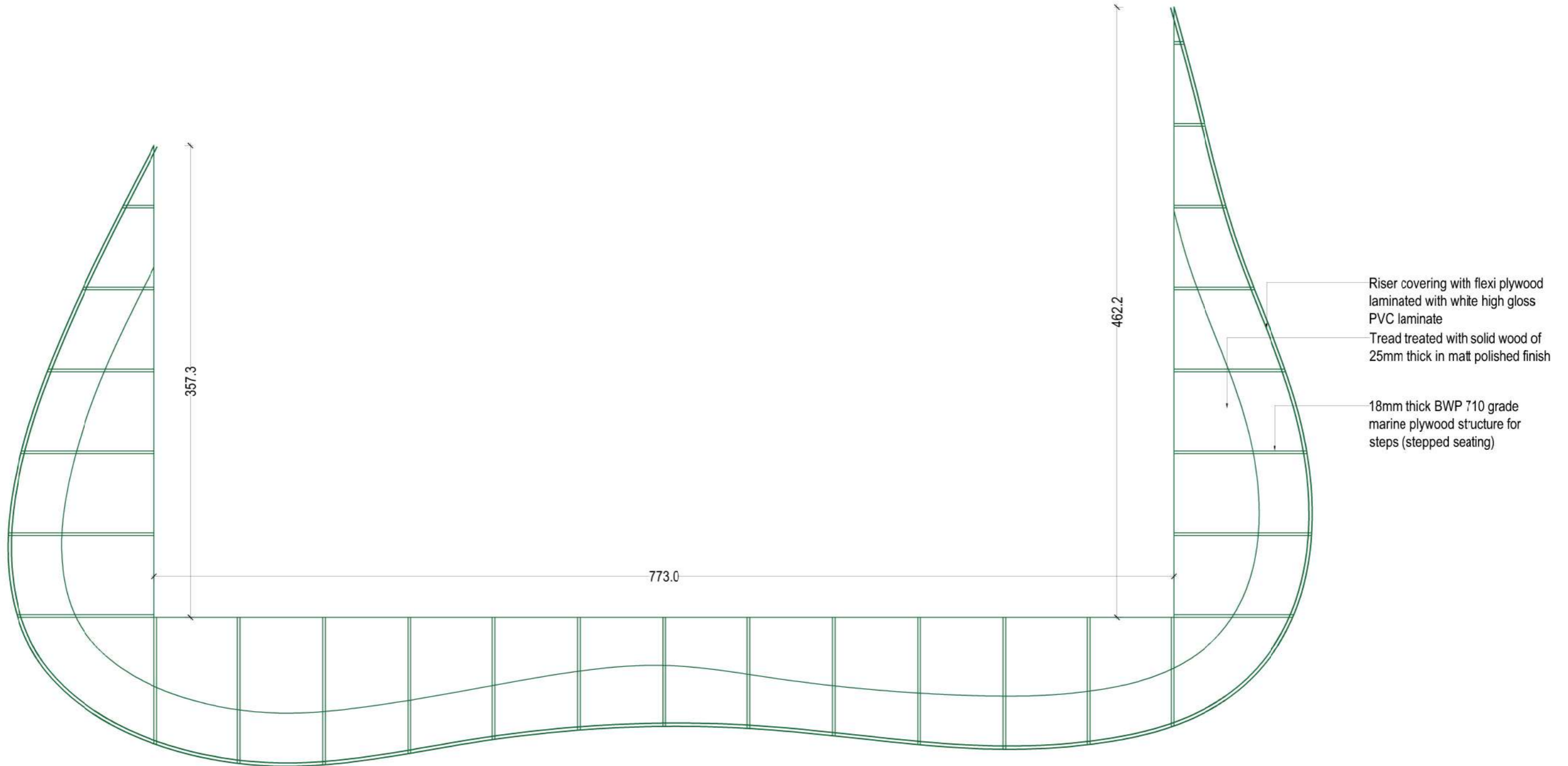
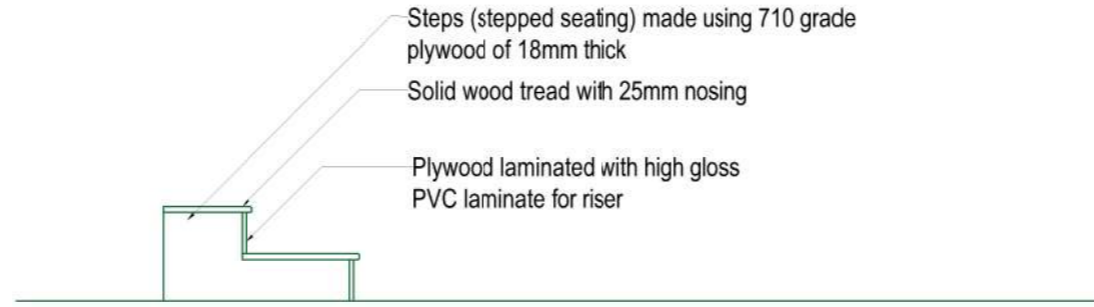
Consultant:
P.C. RASHEED AND ASSOCIATES.
 202 | 0077 | 304 | 07011001010
 Karthar, Triv., Kanchipuram, Erode Region P.O.,
 Dist: Tamil Nadu - 626004
 Email: p.c.rasheed@pcraa.com
 p.c.rasheed@pcraa.com
 Mob: 91 9895846461, 91 9897442461

CHEF CONSULTANT:
Er P.C.ABDUL RASHEED B-Tech, FIILSLA, FIIV.
 REGISTERED ENGINEER-A
 REGN NO CI-3140/2000/69/EA

Drawn By:
 Ar. Naval Muhammed
 Ar. Ridha k
 Er. Treertha T
 Er. Noufan VP

TITLE: STUDY HUB
Scale: 1:100
Date: 29/01/2026

DWG NO.
EDR
08 A



PROPOSED INTERIOR DESIGN OF THE CENTRAL LIBRARY AT SECOND FLOOR & THIRD FLOOR OF ADMINISTRATIVE COMPLEX IN IISER THIRUVANANTHAPURAM

Notes:
 1. This drawing is the sole property of m/s p.c.rasheed and associates. the rights of reproduction, modification or alteration are reserved by the consultant.
 2. This drawing is not to be used for any other purpose or any other project.
 3. No dimensions are to be scaled out from the drawing. Squared dimensions should be followed.
 4. Check all measurements and levels before commencing the work. Inform the consultant before starting the construction.

REMARKS:
 1. Dimensions are in Meters
 2. Do not scale out the drawing
 3. Columns, Beams sizes as per structural details
 4. Laterite for masonry is 20cm thick, unfinished size (The size shown in the drawing)
 5. Plastering thickness 1.5cm (Unless specified)

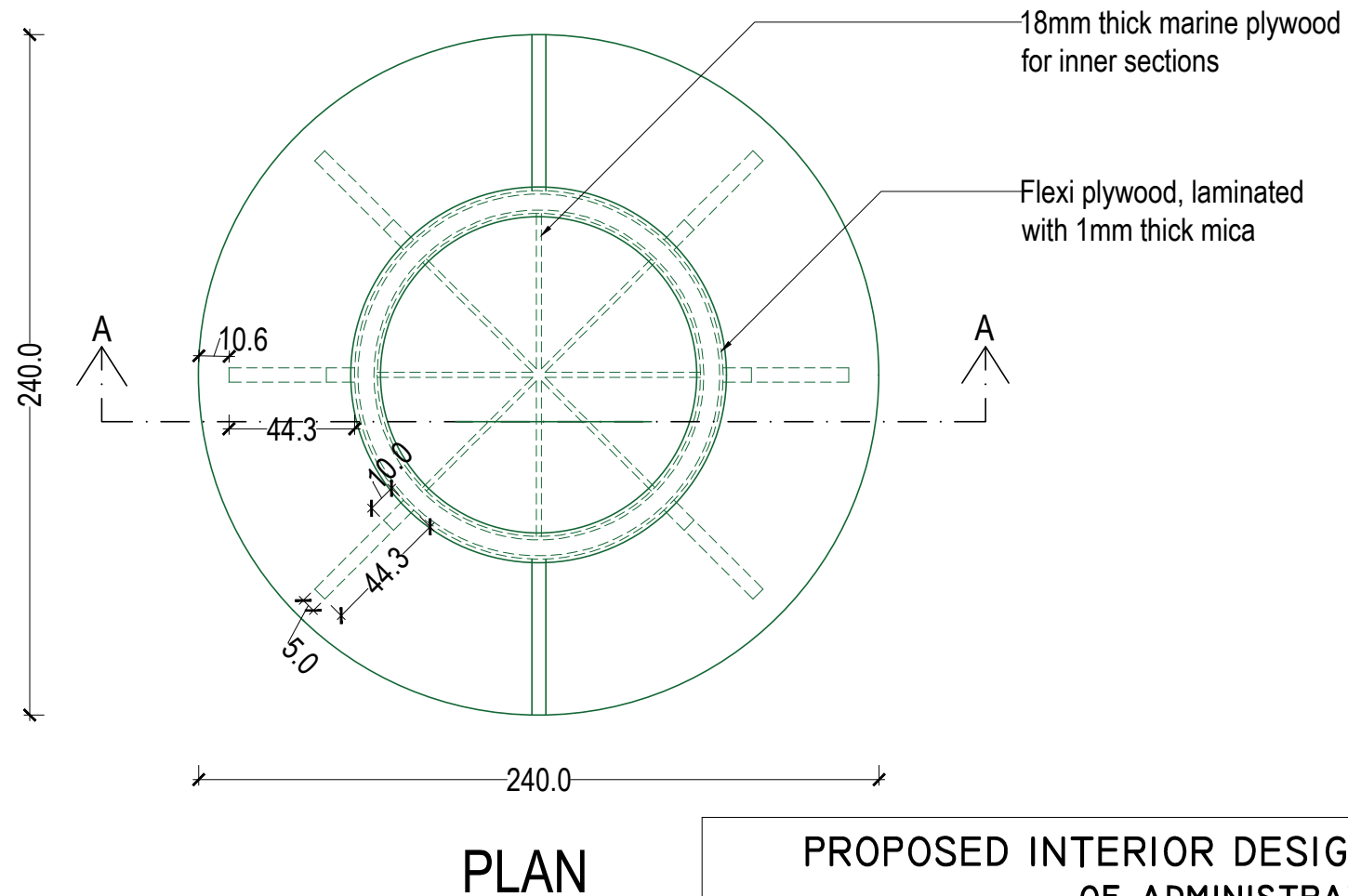
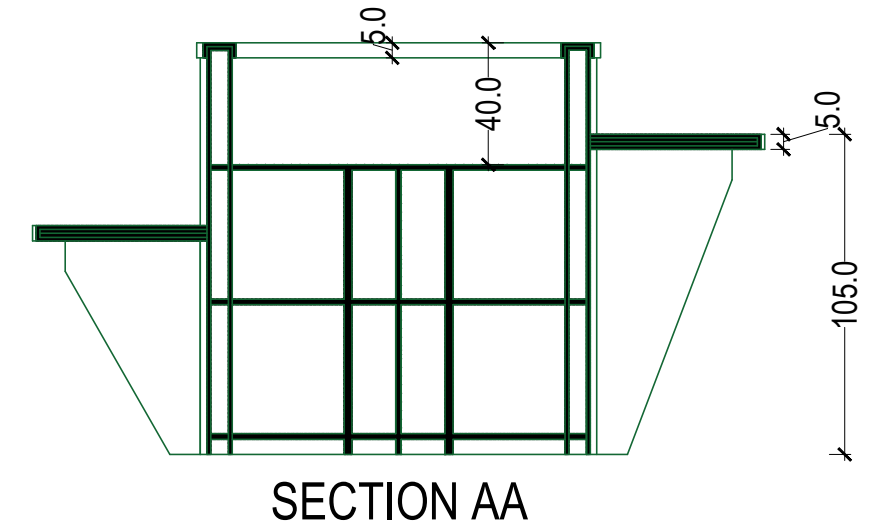
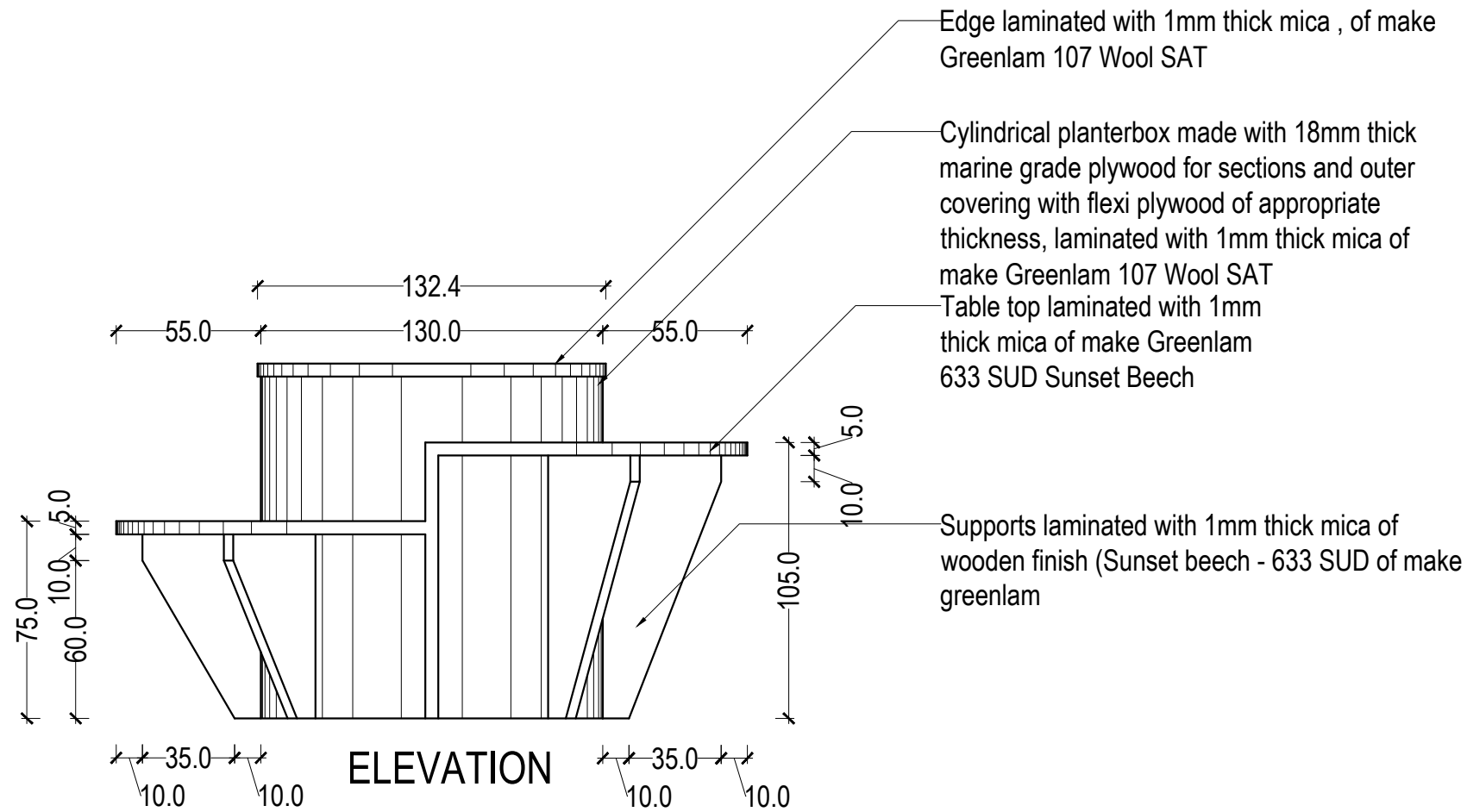
Consultant:
P.C. RASHEED AND ASSOCIATES.
 WINDHOLE ROAD TRIVANDRUM
 KERALA INDIA, 682029, TRIVANDRUM P.O.,
 DISTRICT-ERNAKULAM, KERALA
 TEL: 9846-873886, 9846-873887
 EMAIL: p.c.rasheed@pcraa.com, rasheedpc@pcraa.com
 MOBILE: 9846244444, 9846244443

CHEF CONSULTANT:
Er P.C.ABDUL RASHEED B-Tech,FIIISLA,FIIV.
 REGISTERED ENGINEER-A
 REGN NO CI-3140/2000/69/EA

Drawn By:
 Ar. Navaf Muhammed
 Ar. Ridha k
 Er. Treetha T
 Er. Noufan VP
CLIENT:
 IISER Thiruvananthapuram

TITLE: STEPPED SEATING
Scale: 1:100
Date: 29/01/2026

DWG NO.
EDR
09 B



PROPOSED INTERIOR DESIGN OF THE CENTRAL LIBRARY AT SECOND FLOOR & THIRD FLOOR OF ADMINISTRATIVE COMPLEX IN IISER THIRUVANANTHAPURAM

Notes:
 1. This drawing is the sole property of M/s P.C. Rasheed and Associates, the rights of reproduction, modification or alteration are reserved by the consultant.
 2. This drawing is not to be used for any other purpose or any other project.
 3. No dimensions are to be scaled out from the drawing, figured dimensions should be followed.
 4. Check all measurements and levels before commencing the work.
 Intimate the consultant before starting the construction.

REMARKS:
 1. Dimensions are in Meters
 2. Do not scale out the drawing
 3. Columns, Beams sizes as per structural details
 4. Laterite for masonry is 20cm thick, unfinished size (The size shown in the drawing)
 5. Plastering thickness 1.5cm (Unless specified)

Consultant:
P.C. RASHEED AND ASSOCIATES.
 10/10, 1st Floor, K. P. Road, Thiruvananthapuram - 695 015, Kerala
 Phone: +91 9846464641, +91 9497144641

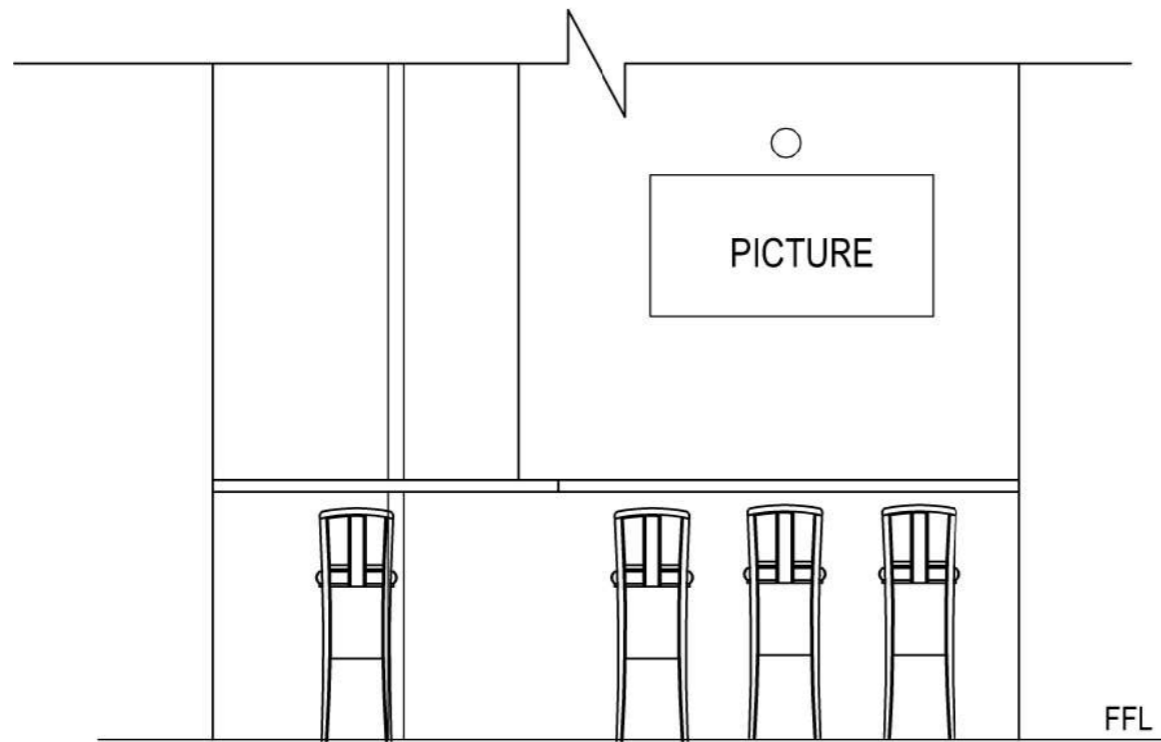
CHIEF CONSULTANT:
Er P.C.ABDUL RASHEED B-Tech, FIISLA, FIIV.
 REGISTERED ENGINEER-A
 REGN NO CI-3140/2000/69/EA

Drawn By:
 Ar. Naval Muhammed
 Ar. Ridha K
 Er.Theertha T
 Er.Noufan VP

TITLE: CIRCULAR TABLE
Scale: 1:100
Date: 29/01/2026
CLIENT: IISER Thiruvananthapuram

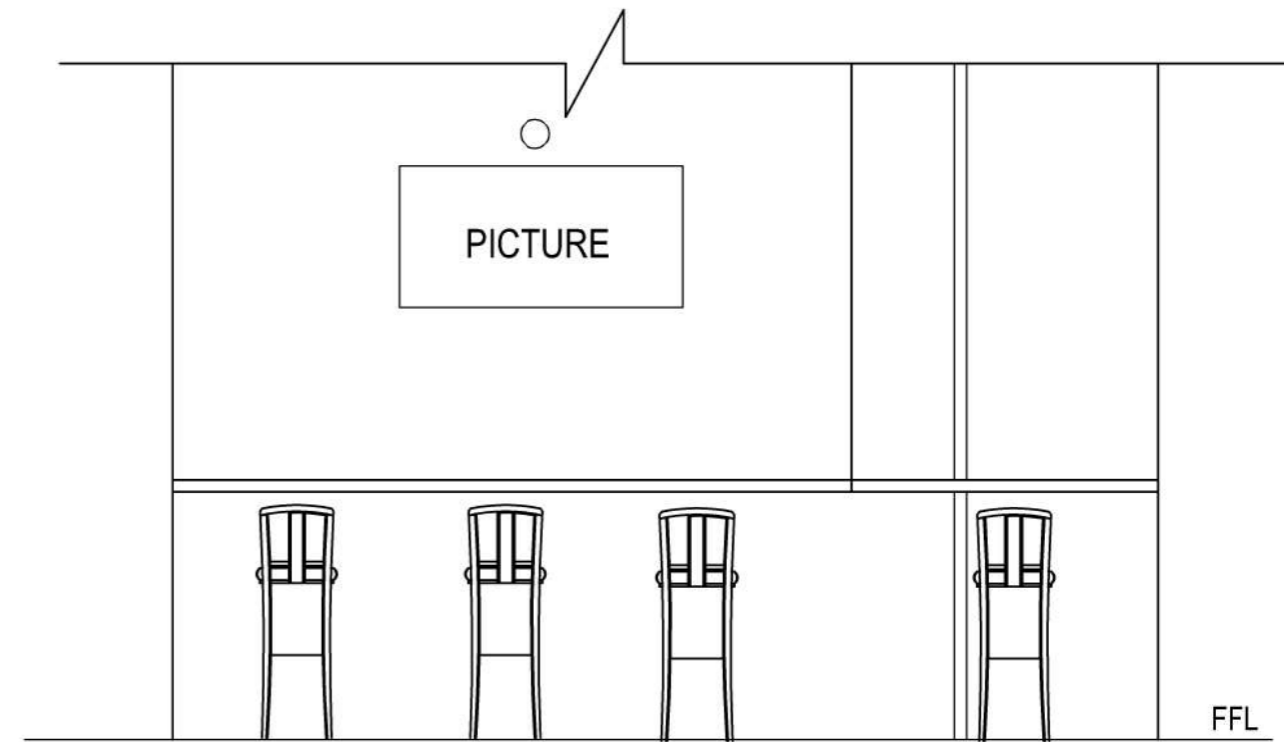
DWG NO.
EDR
10B

HIGH TABLE 1

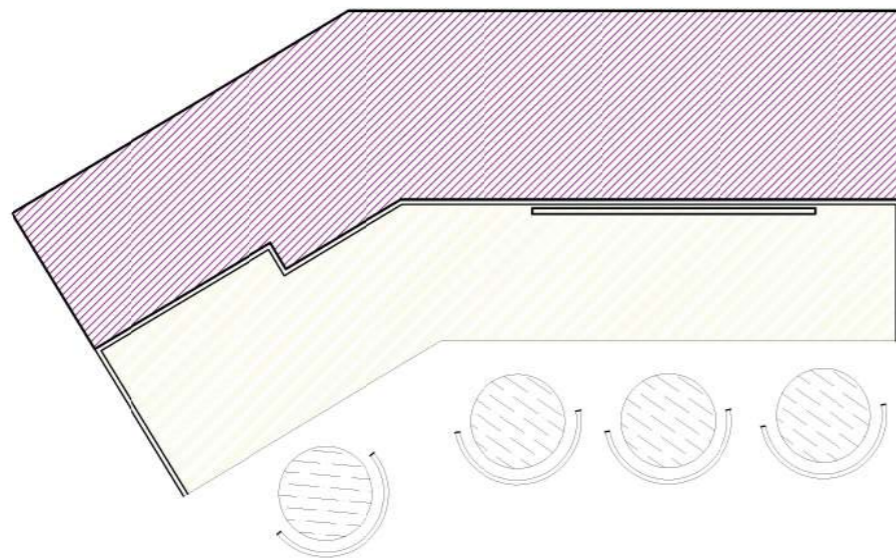


ELEVATION

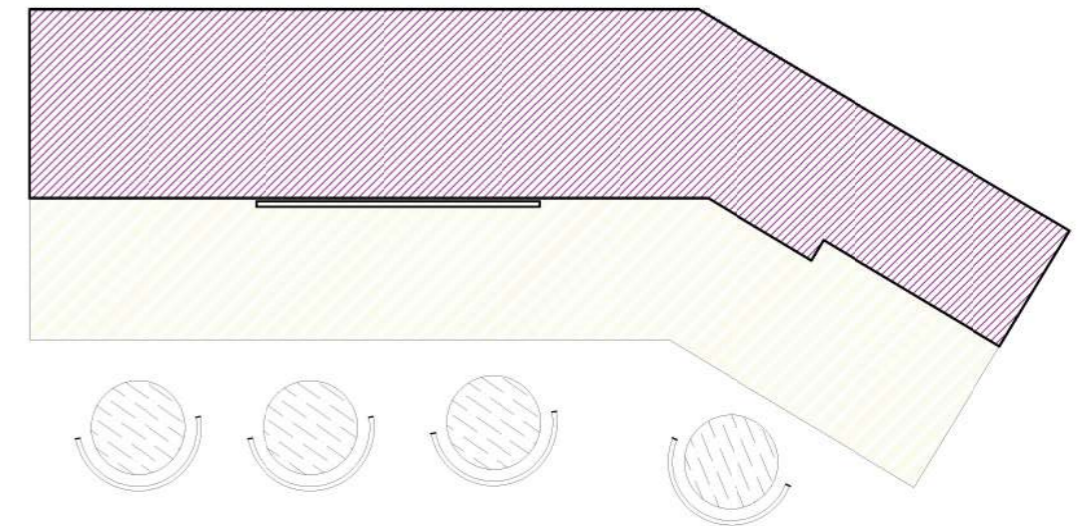
HIGH TABLE 2



ELEVATION



PLAN



PLAN

PROPOSED INTERIOR DESIGN OF THE CENTRAL LIBRARY AT SECOND FLOOR & THIRD FLOOR OF ADMINISTRATIVE COMPLEX IN IISER THIRUVANANTHAPURAM

Notes:

1. This drawing is the sole property of m/c p.c.rasheed and associates. the rights of reproduction, modification or alteration are reserved by the consultant.
 This drawing is not to be used for any other purpose or any other project.
 2. no dimensions are to be scaled out from the drawing. figured dimensions should be followed.
 3. check all measurements and levels before commencing the work. inform the consultant before starting the construction.

REMARKS:

1. Dimensions are in Meters
 2. Do not scale out the drawing
 3. Columns, Beams sizes as per structural details
 4. Latelite for masonry is 20cm thick, unfinished size (The size shown in the drawing)
 5. Plastering thickness 1.5cm (Unless specified)

Consultant:

P.C. RASHEED AND ASSOCIATES.
 20/11/2017 400 11/2017/2017
 Rasheed Road, Kachalappu, Ernakulam P.O.,
 Kerala-682006, Kerala
 Contact: 9847644444, 9847644444
 Email: p.c.rasheed@pcraa.com
 www.pcraa.com

CHEF CONSULTANT:

Er P.C.ABDUL RASHEED B-Tech,FIILSLA,FIIV.
 REGISTERED ENGINEER-A
 REGN NO CI-3140/2000/69/EA

Drawn By:

Ar. Navaf Muhammed
 Ar. Ridha k
 Er.Treertha T
 Er.Noofan VP

TITLE: HIGH TABLE

Scale: 1:100

Date: 29/01/2026

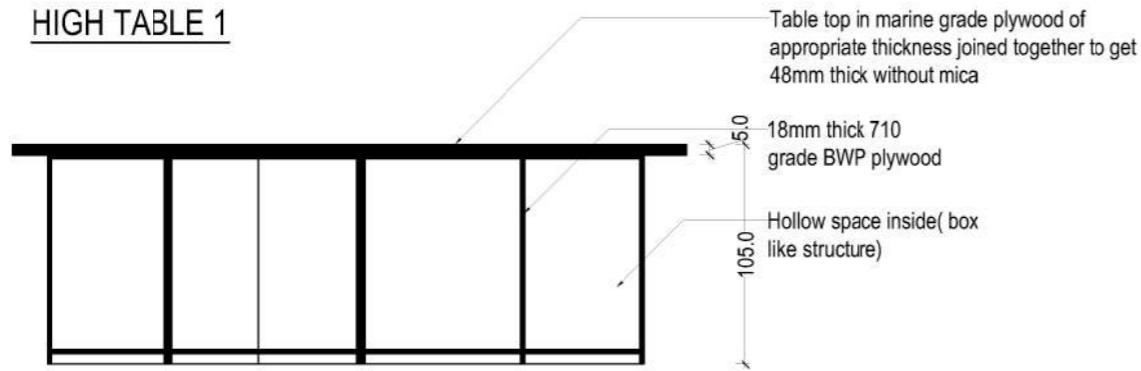
CLIENT:

IISER Thiruvananthapuram

DWG NO.

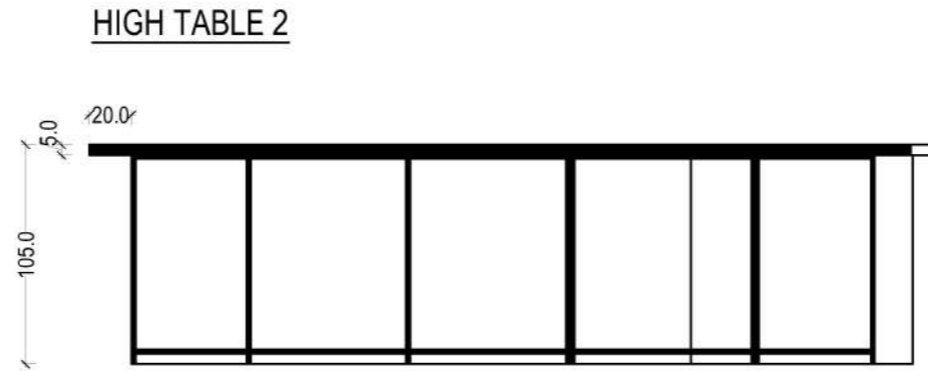
**EDR
 12A**

HIGH TABLE 1

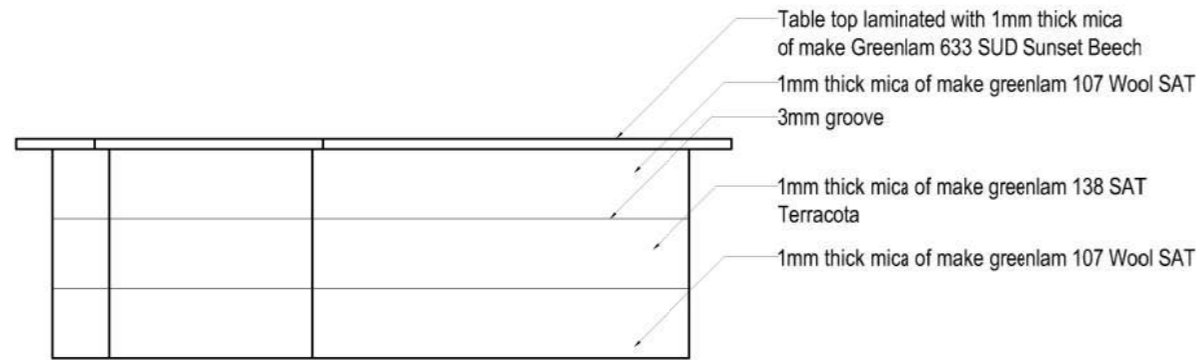


SECTION AA

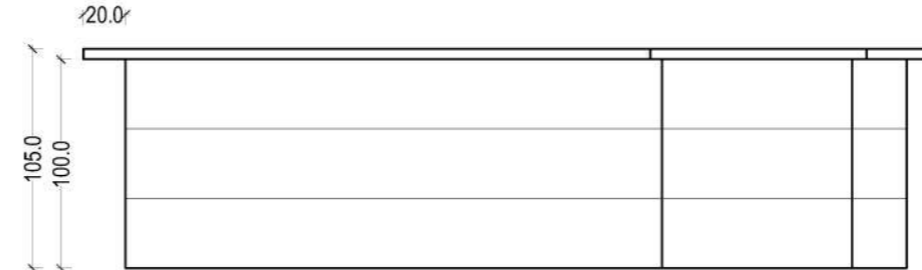
HIGH TABLE 2



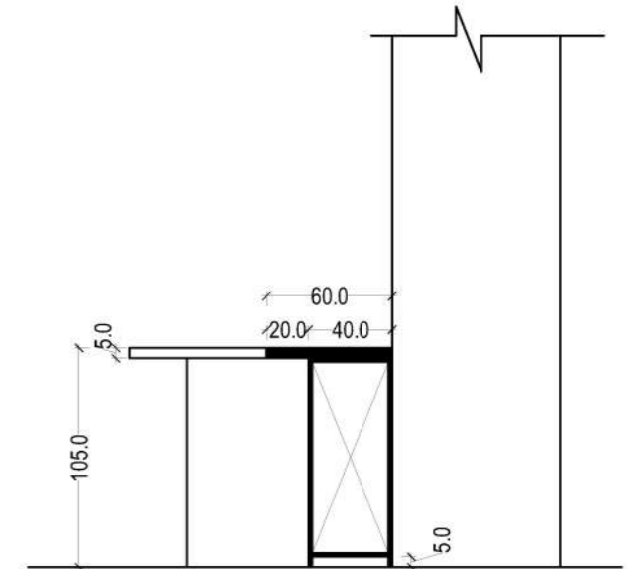
SECTION BB



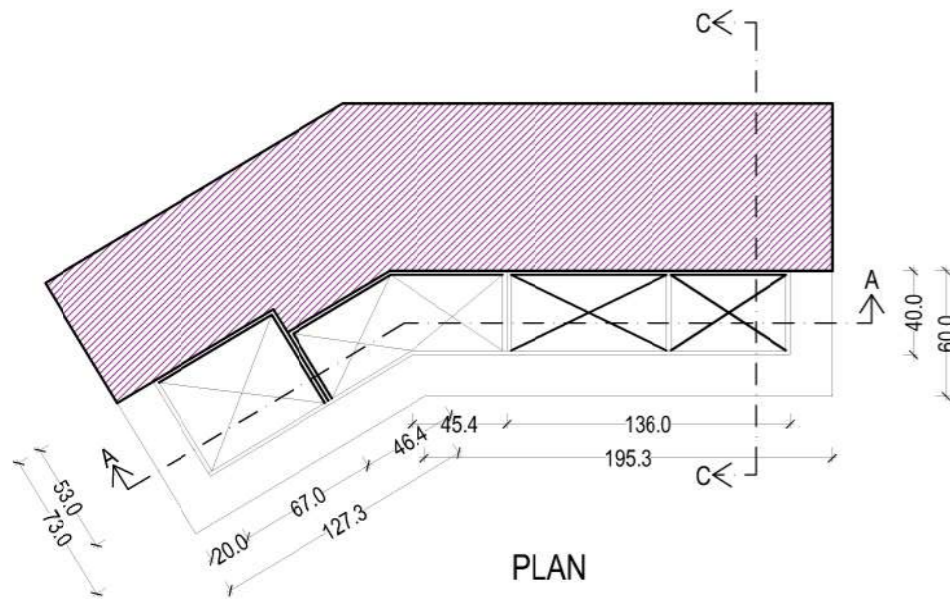
ELEVATION



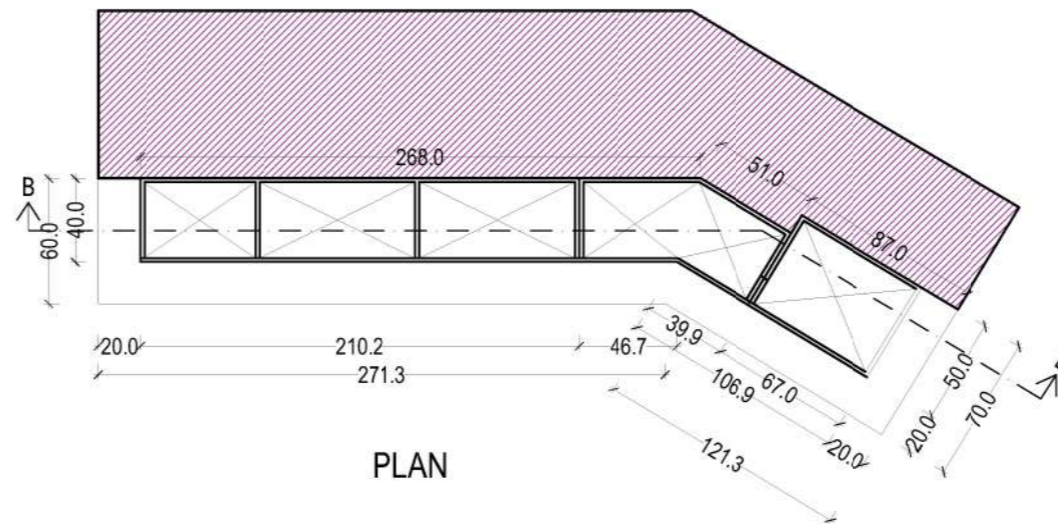
ELEVATION



SECTION CC



PLAN



PLAN

PROPOSED INTERIOR DESIGN OF THE CENTRAL LIBRARY AT SECOND FLOOR & THIRD FLOOR OF ADMINISTRATIVE COMPLEX IN IISER THIRUVANANTHAPURAM

Notes:
 1. This drawing is the sole property of m/s p.c.rasheed and associates. the rights of reproduction, modification or alteration are reserved by the consultant.
 2. This drawing is not to be used for any other purpose or any other project.
 3. All dimensions are to be scaled out from the drawing. Squared dimensions should be followed.
 4. Check all measurements and levels before commencing the work. Inform the consultant before starting the construction.

REMARKS:
 1. Dimensions are in Meters
 2. Do not scale out the drawing
 3. Columns, Beams sizes as per structural details
 4. Latente for masonry is 20cm thick, unfinished size (The size shown in the drawing)
 5. Plastering thickness 1.5cm (Unless specified)

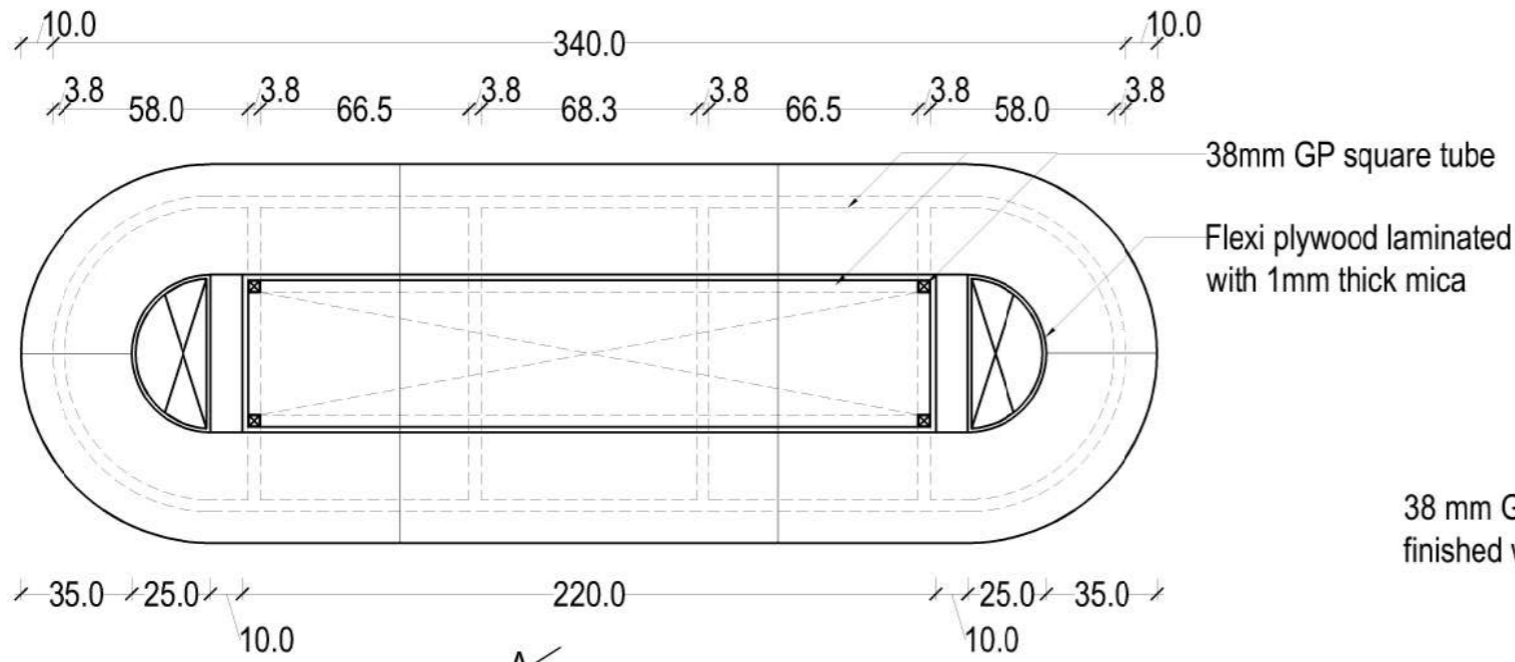
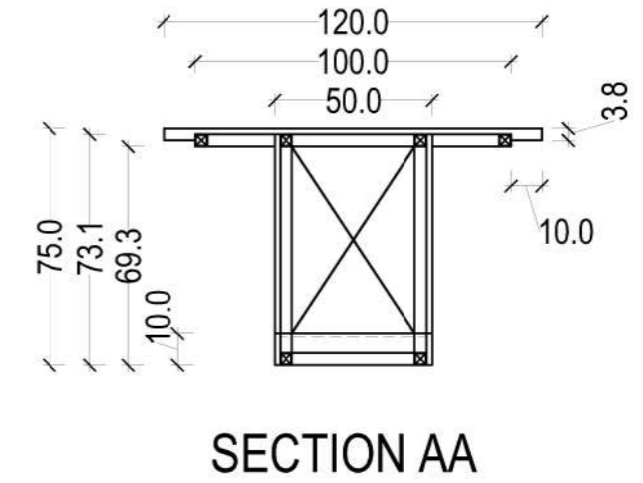
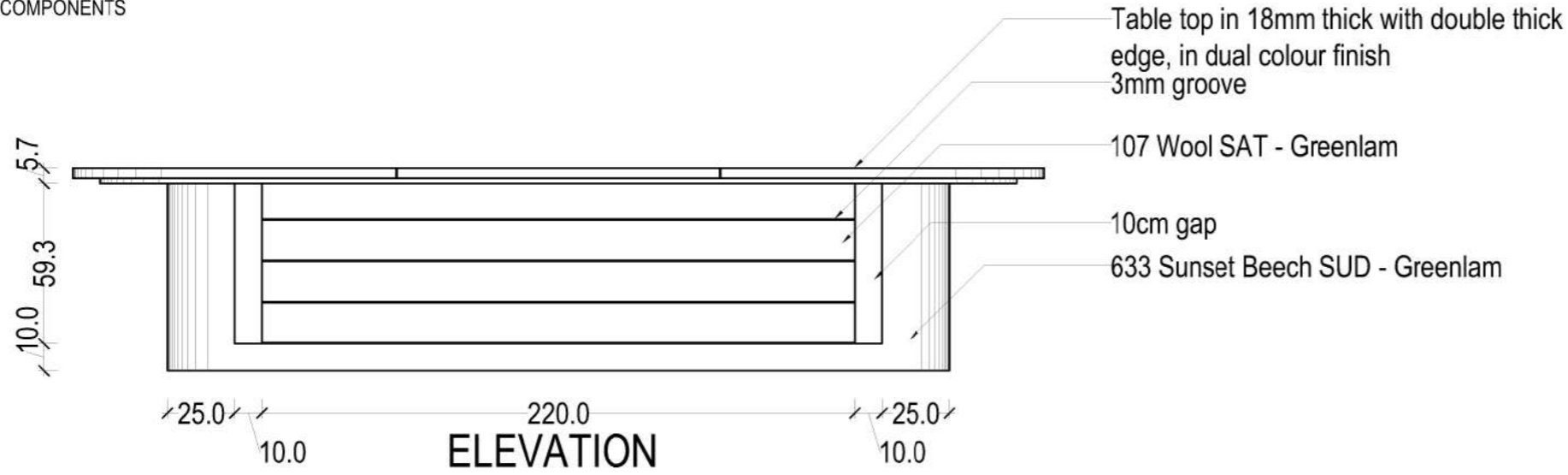
Consultant:
P.C. RASHEED AND ASSOCIATES.
 ENGINEERS ARCHITECTS INTERIORS
 Karthikeyan Street, Kumbakonam, Tamil Nadu 612402
 Contact: 94421-73109-84464
 Email: pcrasheedandassociates@gmail.com
 pcrasheedandassociates@gmail.com
 Web: 91-9952844641, 91-9952844641

CHEF CONSULTANT:
Er P.C.ABDUL RASHEED B-Tech,FIIISLA,FIIV
 REGISTERED ENGINEER-A
 REGN NO CI-3140/2000/69/EA

Drawn By:
 Ar. Navaf Muhammed
 Ar. Ridha k
 Er. Treertha T
 Er. Noufan VP

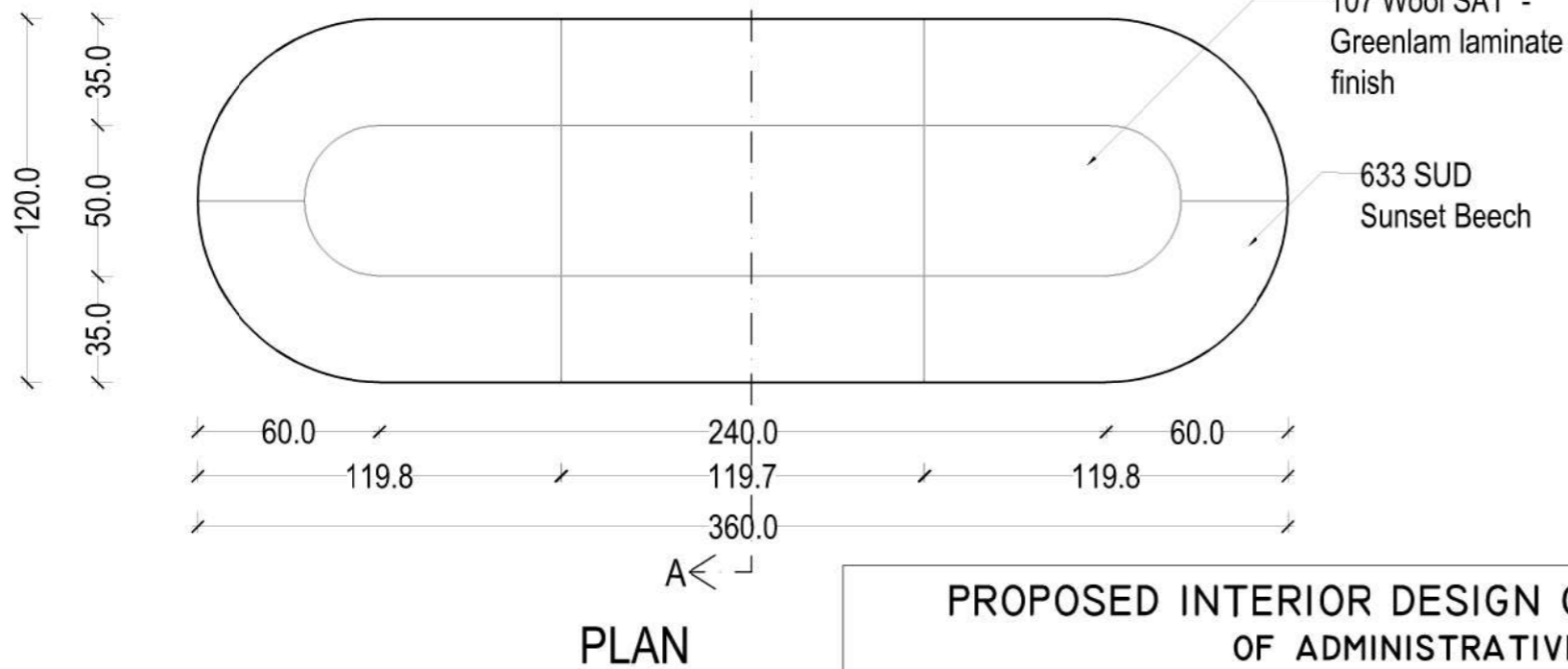
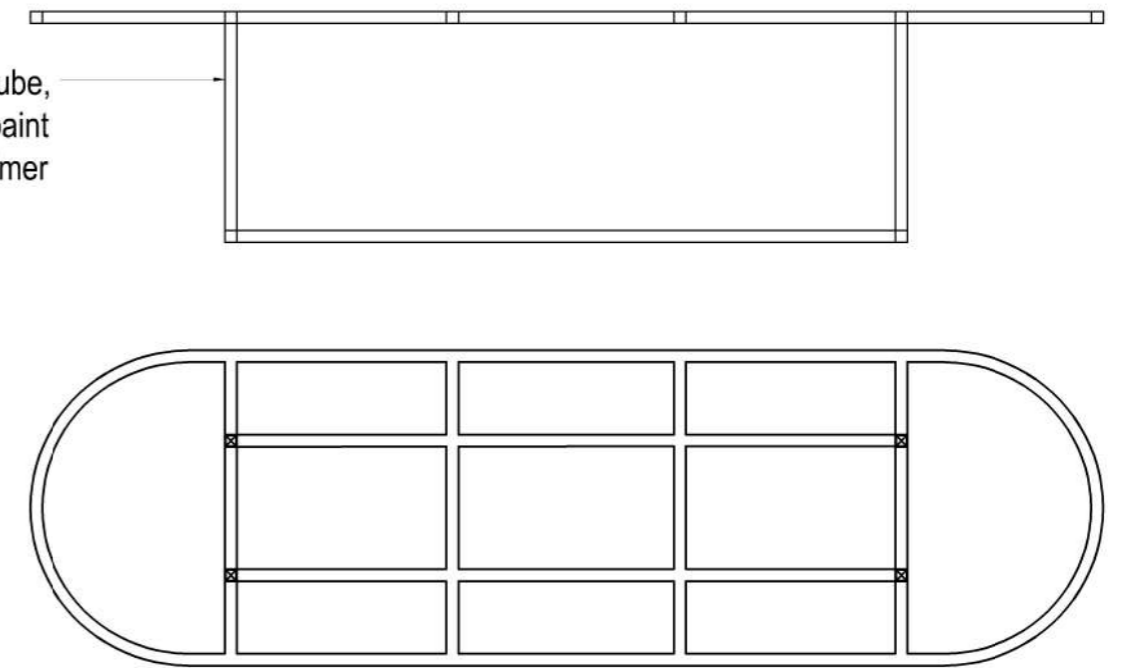
TITLE: HIGH TABLE
 Scale: 1:100
 Date: 29/01/2026
 CLIENT: IISER Thiruvananthapuram

DWG NO. **EDR 12B**



METAL FRAME WORK

38 mm GP square tube, finished with black paint after primer



PROPOSED INTERIOR DESIGN OF THE CENTRAL LIBRARY AT SECOND FLOOR & THIRD FLOOR OF ADMINISTRATIVE COMPLEX IN IISER THIRUVANANTHAPURAM

Notes:
1. This drawing is the sole property of m/s p.c.rasheed and associates. The rights of reproduction, modification or alteration are reserved by the consultant.
2. This drawing is not to be used for any other purpose or any other project.
3. No dimensions are to be scaled out from the drawing. Squared dimensions should be followed.
4. Check all measurements and levels before commencing the work. Inform the consultant before starting the construction.

REMARKS:
1. Dimensions are in Meters
2. Do not scale out the drawing
3. Columns, Beams sizes as per structural details
4. Latente for masonry is 20cm thick, unfinished size (The size shown in the drawing)
5. Plastering thickness 1.5cm (Unless specified)

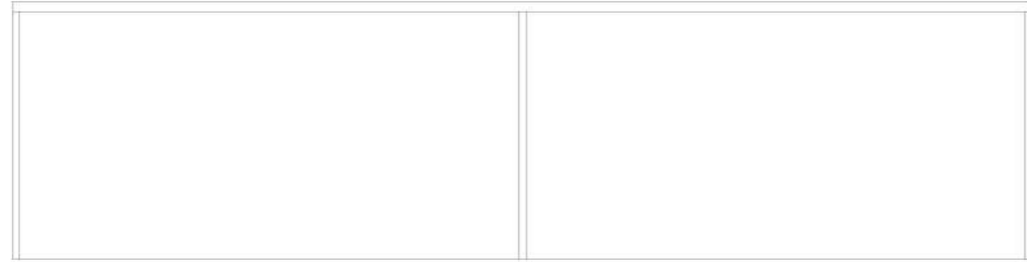
Consultant:
P.C. RASHEED AND ASSOCIATES.
P. C. RASHEED & ASSOCIATES
REGD OFFICE: 10/1, KALANJAYAPURAM, THIRUVANANTHAPURAM
CONTACT: 9947110101, 9947110102
EMAIL: pcrasheed@pccra.com

CHEF CONSULTANT:
Er P.C.ABDUL RASHEED B-Tech,FIILSLA,FIIV.
REGISTERED ENGINEER-A
REGN NO CI-3140/2000/69/EA

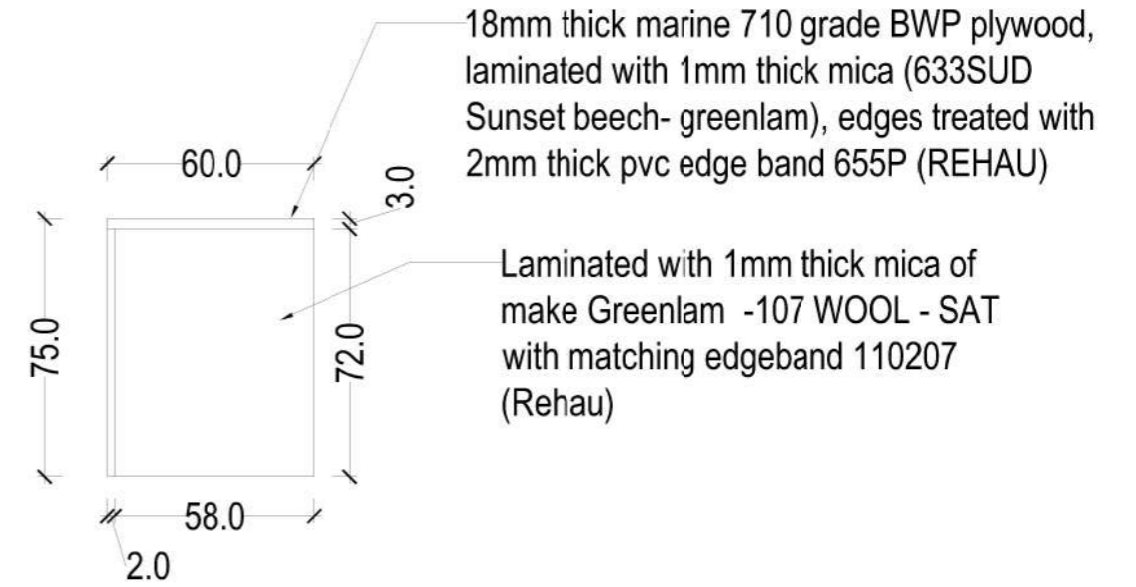
Drawn By:
Ar. Navaf Muhammed
Ar. Ridha k
Er. Treertha T
Er. Noufan VP
CLIENT:
IISER Thiruvananthapuram

TITLE: DISCUSSION TABLE
Scale: 1:100
Date: 29/01/2026

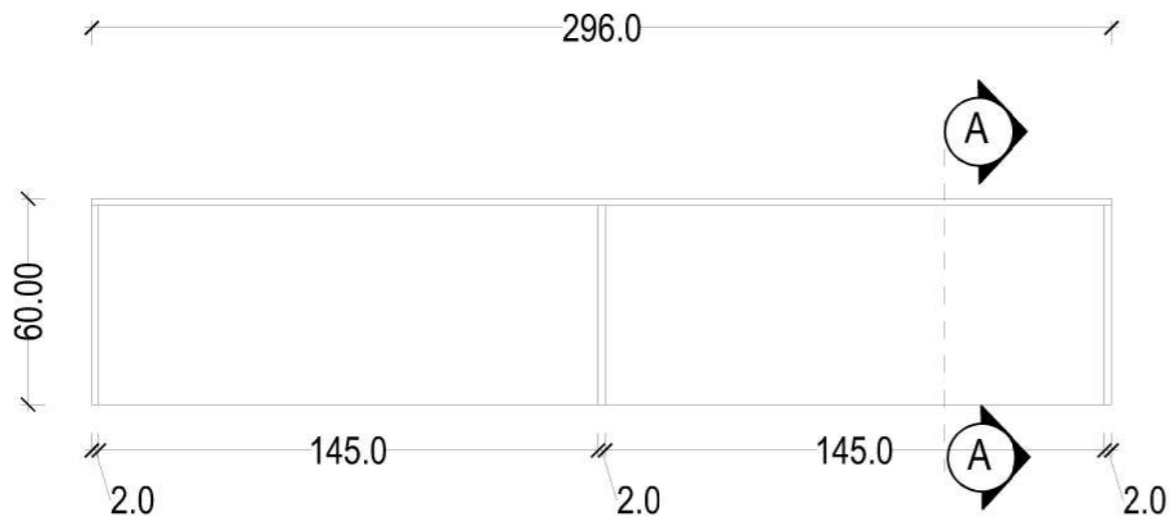
DWG NO.
EDR
13



ELEVATION



SECTION AA



PLAN

PROPOSED INTERIOR DESIGN OF THE CENTRAL LIBRARY AT SECOND FLOOR & THIRD FLOOR OF ADMINISTRATIVE COMPLEX IN IISER THIRUVANANTHAPURAM

Notes:
 1. This drawing is the sole property of m/c p.c.rasheed and associates. the rights of reproduction, modification or alteration are reserved by the consultant.
 2. This drawing is not to be used for any other purpose or any other project.
 3. No dimensions are to be scaled out from the drawing. Squared dimensions should be followed.
 4. Check all measurements and levels before commencing the work. Inform the consultant before starting the construction.

REMARKS:
 1. Dimensions are in Meters
 2. Do not scale out the drawing
 3. Columns, Beams sizes as per structural details
 4. Latente for masonry is 20cm thick, unfinished size (The size shown in the drawing)
 5. Plastering thickness 1.5cm (Unless specified)

Consultant:
P.C. RASHEED AND ASSOCIATES.
 202 | 00000 304 000100010
 Karthar, Topal, Kanchibana, Ernakulam P.O.,
 Kerala-670309- Kanan
 Email: pcrasheedandassociates@gmail.com
 pcrasheed@pqrmail.com
 Mob: 91 9895866641, 91 9897461361

CHEF CONSULTANT:
Er P.C.ABDUL RASHEED B-Tech,FIILSLA,FIIV.
 REGISTERED ENGINEER-A
 REGN NO CI-3140/2000/69/EA

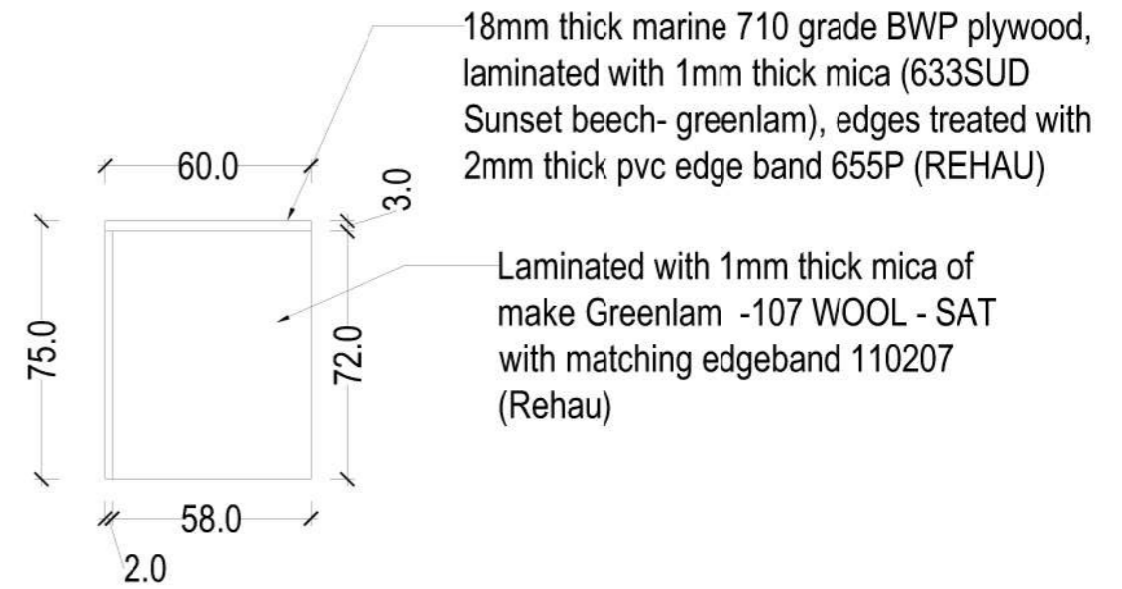
Drawn By:
 Ar. Naval Muhammed
 Ar. Ridha k
 Er.Treertha T
 Er.Noufan VP

TITLE: STAFF TABLE 1
Scale: 1:100
Date: 29/01/2026
CLIENT: IISER Thiruvananthapuram

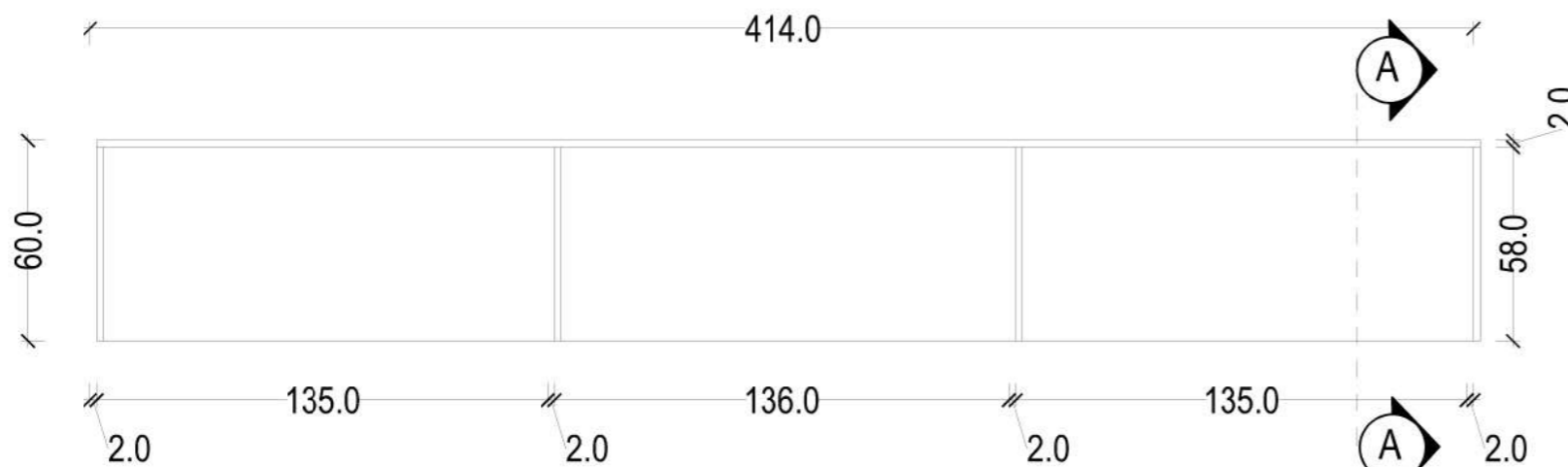
DWG NO.
EDR
15



ELEVATION



SECTION AA



PLAN

PROPOSED INTERIOR DESIGN OF THE CENTRAL LIBRARY AT SECOND FLOOR & THIRD FLOOR OF ADMINISTRATIVE COMPLEX IN IISER THIRUVANANTHAPURAM

Notes:
 1. This drawing is the sole property of m/c p.c.rasheed and associates. the rights of reproduction, modification or alteration are reserved by the consultant.
 2. This drawing is not to be used for any other purpose or any other project.
 3. All dimensions are to be scaled out from the drawing. Squared dimensions should be followed.
 4. Check all measurements and levels before commencing the work. Inform the consultant before starting the construction.

REMARKS:
 1. Dimensions are in Meters
 2. Do not scale out the drawing
 3. Columns, Beams sizes as per structural details
 4. Latente for masonry is 20cm thick, unfinished size (The size shown in the drawing)
 5. Plastering thickness 1.5cm (Unless specified)

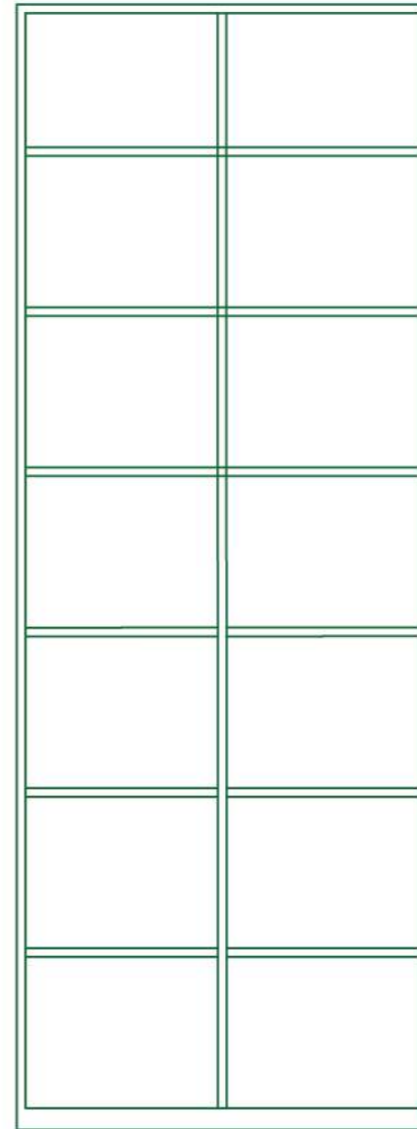
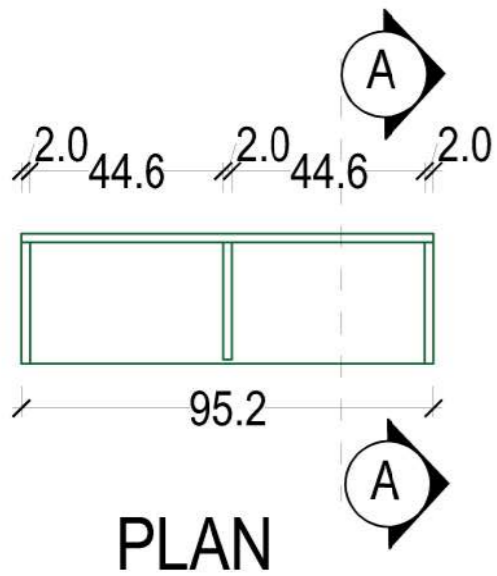
Consultant:
P.C. RASHEED AND ASSOCIATES.
 P. C. RASHEED & ASSOCIATES
 202 | OFFICE 304 B | BHOJANAPURAM
 Kuttuvayal, Thiruvananthapuram, Kerala, India
 Phone: +91 9447210199 - 844641
 Email: p.c.rasheed@pcraa.com, p.c.rasheed@pcraa.in
 Website: www.pcraa.com, www.pcraa.in

CHEF CONSULTANT:
Er P.C.ABDUL RASHEED B-Tech,FIILSLA,FIIV.
 REGISTERED ENGINEER-A
 REGN NO CI-3140/2000/69/EA

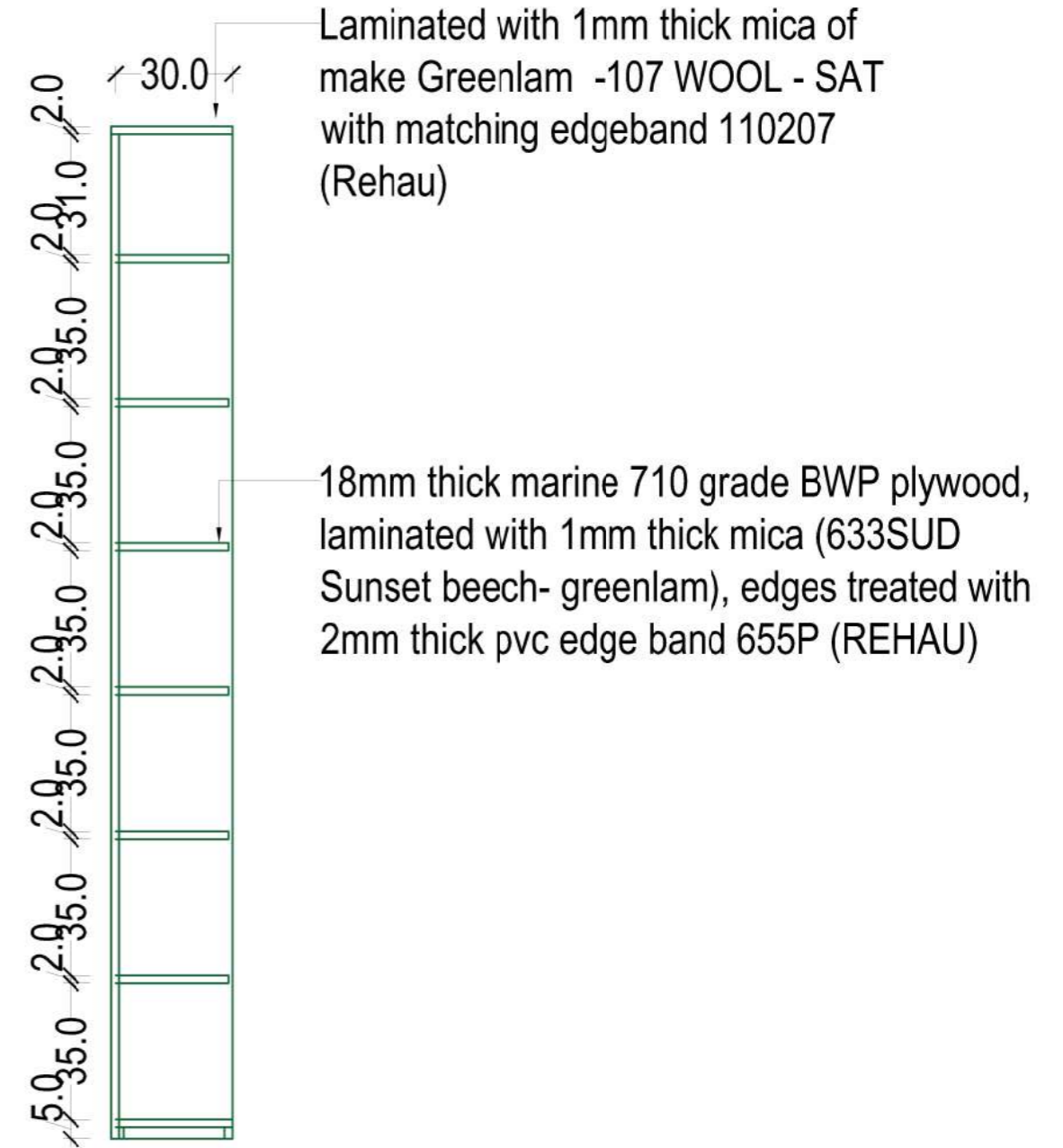
Drawn By:
 Ar. Navaj Muhammed
 Ar. Ridha k
 Er.Treetha T
 Er.Noufan VP

TITLE: STAFF TABLE 2
Scale: 1:100
Date: 29/01/2026
CLIENT: IISER Thiruvananthapuram

DWG NO.
EDR
16



ELEVATION



SECTION AA

PROPOSED INTERIOR DESIGN OF THE CENTRAL LIBRARY AT SECOND FLOOR & THIRD FLOOR OF ADMINISTRATIVE COMPLEX IN IISER THIRUVANANTHAPURAM

Notes:

1. This drawing is the sole property of m/s p.c.rasheed and associates, the rights of reproduction, modification or alteration are reserved by the consultant. This drawing is not to be used for any other purpose or any other project.
2. no dimensions are to be scaled out from the drawing. Squared dimensions should be followed.
3. check all measurements and levels before commencing the work. Inform the consultant before starting the construction.

REMARKS:

1. Dimensions are in Meters
2. Do not scale out the drawing
3. Columns, Beams sizes as per structural details
4. Latente for masonry is 20cm thick, unfinished size (The size shown in the drawing)
5. Plastering thickness 1.5cm (Unless specified)

Consultant:

P.C. RASHEED AND ASSOCIATES.
 ENGINEERS ARCHITECTS
 Karthar, Topi, Kanchipuram, Erode District, Tamil Nadu
 Contact: 97898 44444
 Email: pcrasheedandassociates@gmail.com
 pcrasheed@pccra.com
 Web: www.pccra.com, www.pccra.net

CHEF CONSULTANT:

Er P.C.ABDUL RASHEED B-Tech,FIJISLA,FIIV.
 REGISTERED ENGINEER-A
 REGN NO CI-3140/2000/69/EA

Drawn By:
 Ar. Naval Muhammed
 Ar. Ridha k
 Er.Treertha T
 Er.Noufan VP

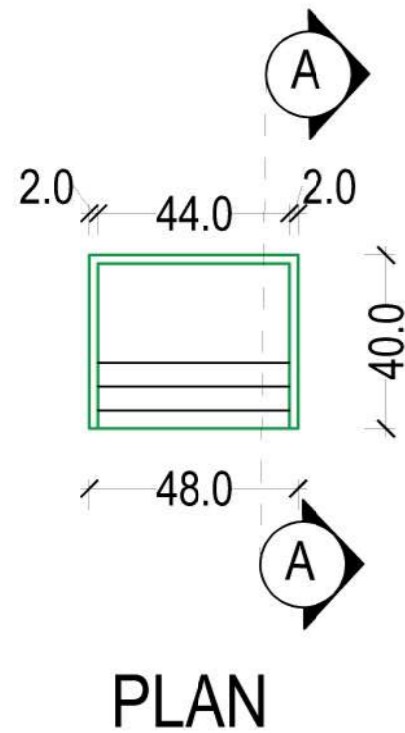
TITLE: LINEAR BOOK SHELF 3

Scale: 1:100 Date: 29/01/2026

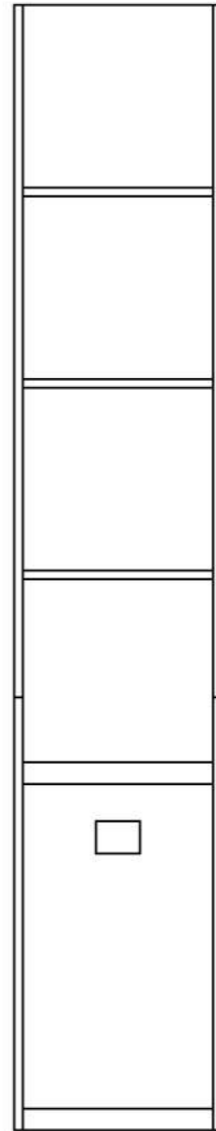
CLIENT:
 IISER Thiruvananthapuram

DWG NO.
EDR

18

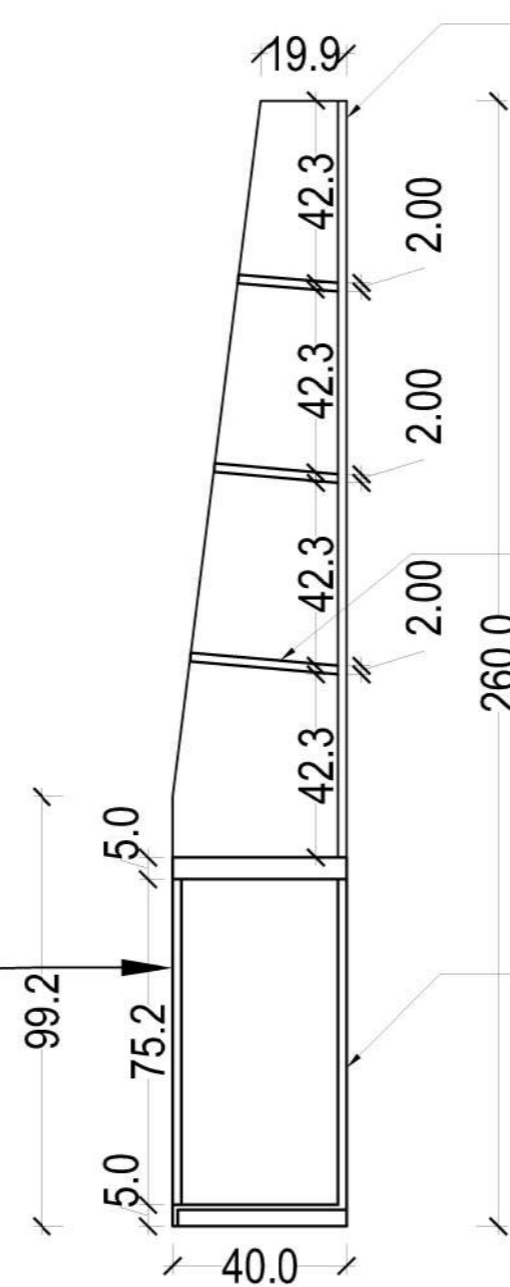


ELEVATION



SECTION AA

Openable shutter



18mm thick plywood laminated with 1mm thick mica of make greenlam - 138 SAT Terracotta

Laminated with 1mm thick mica of make Greenlam -107 WOOL - SAT with matching edgeband 110207 (Rehau)

18mm thick plywood laminated with 1mm thick mica of make greenlam - 138 SAT Terracotta

PROPOSED INTERIOR DESIGN OF THE CENTRAL LIBRARY AT SECOND FLOOR & THIRD FLOOR OF ADMINISTRATIVE COMPLEX IN IISER THIRUVANANTHAPURAM

Notes:
 1. This drawing is the sole property of m/s p.c.rasheed and associates. the rights of reproduction, modification or alteration are reserved by the consultant.
 2. This drawing is not to be used for any other purpose or any other project.
 3. No dimensions are to be scaled out from the drawing. Squared dimensions should be followed.
 4. Check all measurements and levels before commencing the work. Inform the consultant before starting the construction.

REMARKS:
 1. Dimensions are in Meters
 2. Do not scale out the drawing
 3. Columns, Beams sizes as per structural details
 4. Latente for masonry is 20cm thick, unfinished size (The size shown in the drawing)
 5. Plastering thickness 1.5cm (Unless specified)

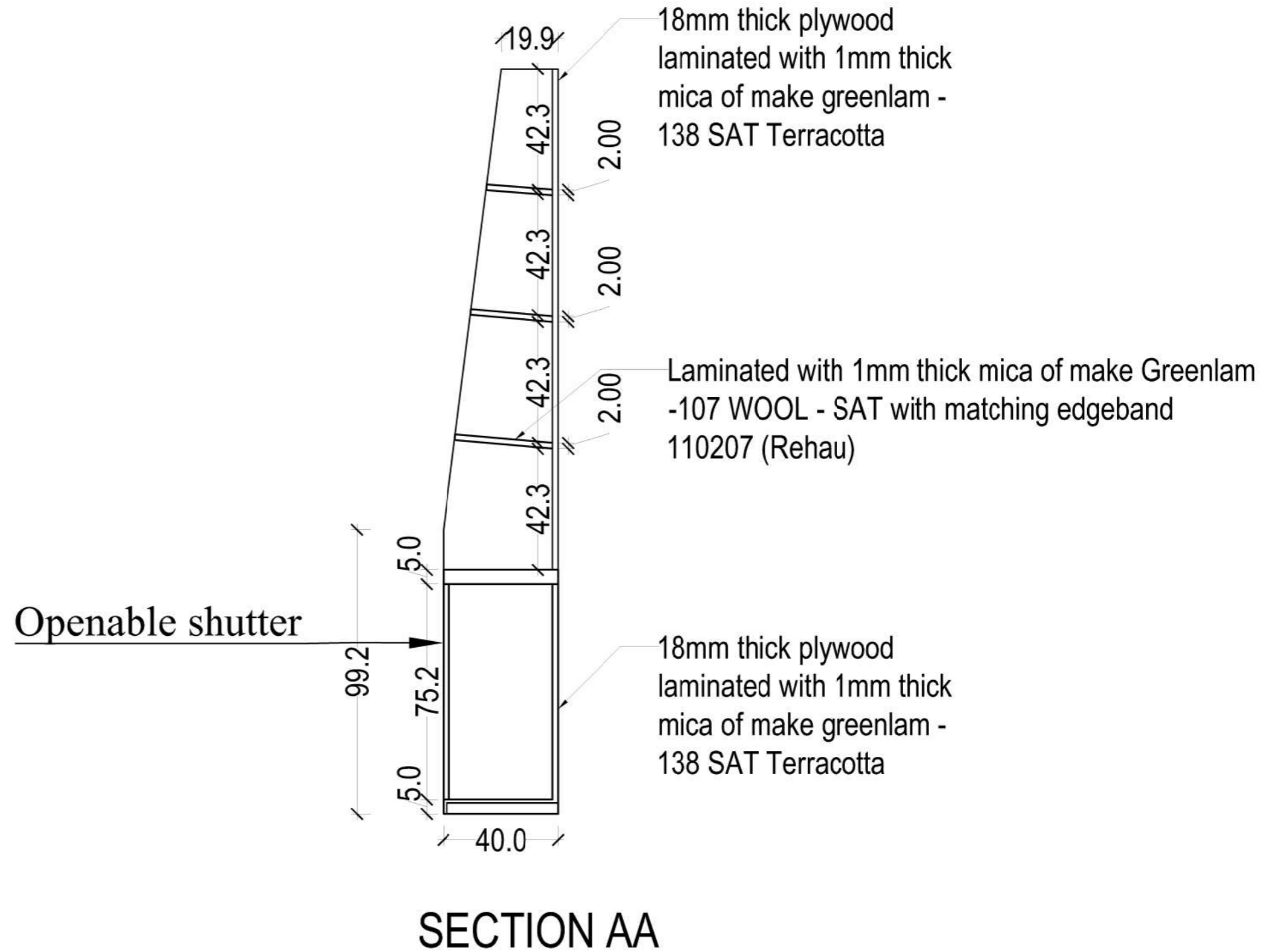
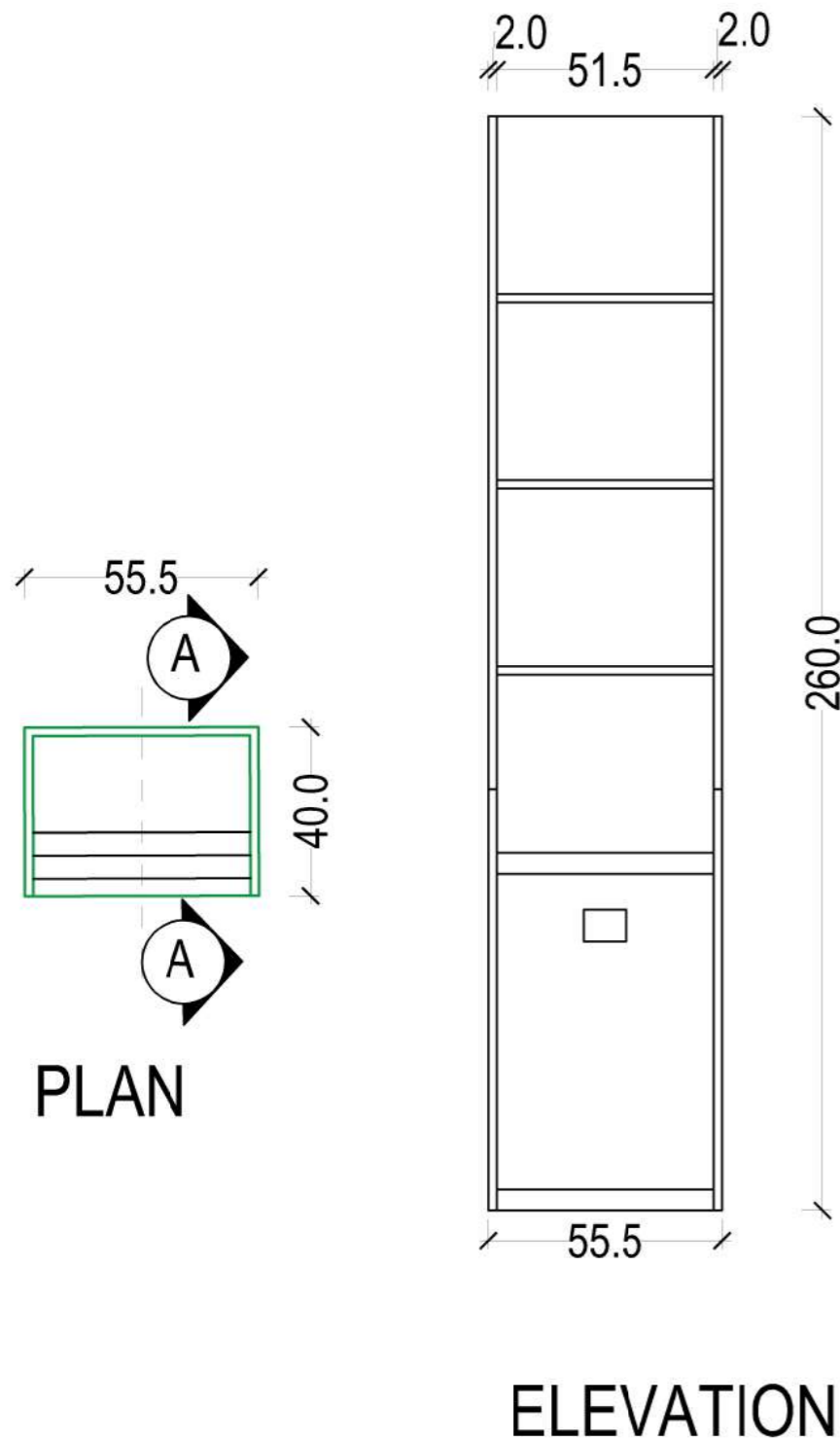
Consultant:
P.C. RASHEED AND ASSOCIATES.
 202 | 0000 304 00000000
 Karoor, Triv., Kanchi, Erode, Tirupur, TN.
 044-4731000-4444
 Email: pcrasheed@pcraa.com
 pcrasheed@pcraa.com
 Web: 01-280584641, 01-280744141

CHEF CONSULTANT:
Er P.C.ABDUL RASHEED B-Tech,FIJISLA,FIIV.
 REGISTERED ENGINEER-A
 REGN NO CI-3140/2000/69/EA

Drawn By:
 Ar. Naval Muhammed
 Ar. Ridha k
 Er.Treertha T
 Er.Noufan VP

TITLE: COLUMN BOOK SHELF NO 4
Scale: 1:100
Date: 29/01/2026
CLIENT: IISER Thiruvananthapuram

DWG NO.
EDR
19



PROPOSED INTERIOR DESIGN OF THE CENTRAL LIBRARY AT SECOND FLOOR & THIRD FLOOR OF ADMINISTRATIVE COMPLEX IN IISER THIRUVANANTHAPURAM

Notes:

1. This drawing is the sole property of m/p.c.rasheed and associates. the rights of reproduction, modification or alteration are reserved by the consultant.
 2. This drawing is not to be used for any other purpose or any other project.
 3. All dimensions are to be scaled out from the drawing. Squared dimensions should be followed.
 4. Check all measurements and levels before commencing the work. Inform the consultant before starting the construction.

REMARKS:

1. Dimensions are in Meters
 2. Do not scale out the drawing
 3. Columns, Beams sizes as per structural details
 4. Latente for masonry is 20cm thick, unfinished size (The size shown in the drawing)
 5. Plastering thickness 1.5cm (Unless specified)

Consultant:

P.C. RASHEED AND ASSOCIATES.
 202 | 0000 | 304 | 00110010
 Karobor, Trivir, Kanchipuram, Tamilnadu 601305, India
 Contact: 97898 4731039 - 84464
 Email: p.c.rasheed@pcraa.com, pcraa@pcraa.com
 Web: www.pcraa.com, www.pcraa.in

CHIEF CONSULTANT:

Er P.C.ABDUL RASHEED B-Tech,FIILSLA,FIIV.
 REGISTERED ENGINEER-A
 REGN NO CI-3140/2000/69/EA

Drawn By:
 Ar. Navaf Muhammed
 Ar. Ridha k
 Er.Treertha T
 Er.Noufan VP

TITLE: COLUMN BOOK SHELF 5

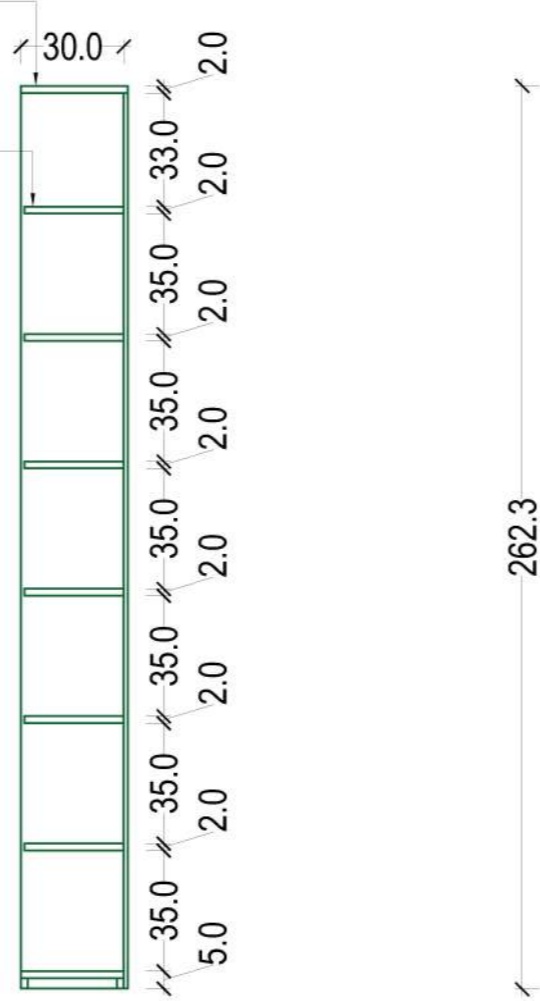
Scale: 1:100

Date: 29/01/2026

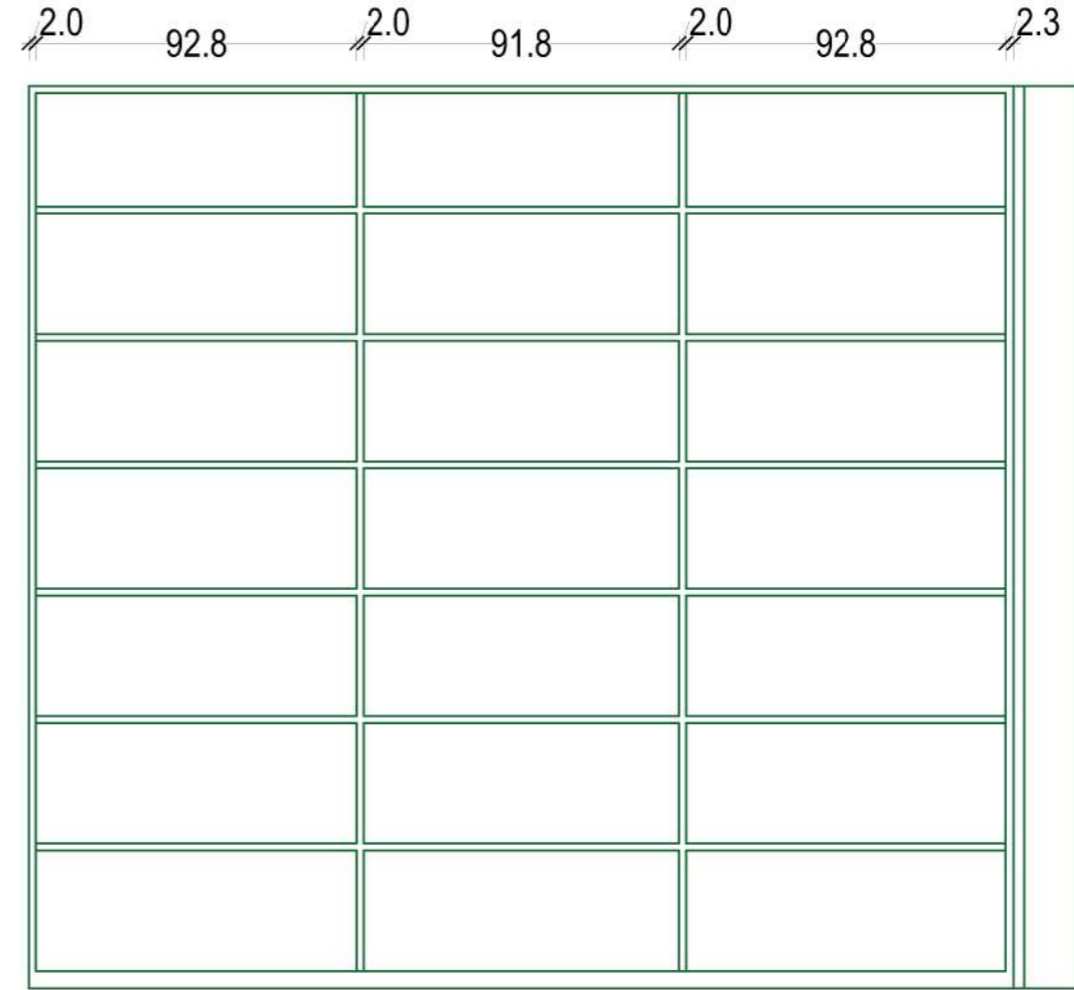
CLIENT:
 IISER Thiruvananthapuram

DWG NO.
EDR
20

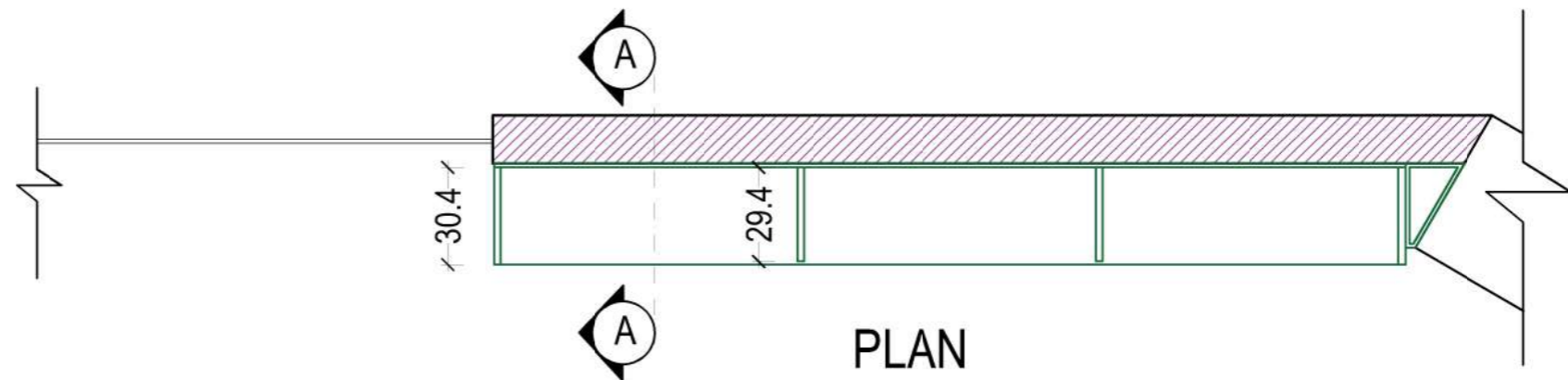
Laminated with 1mm thick mica of make Greenlam -107 WOOL - SAT with matching edgeband 110207 (Rehau)
 18mm thick marine 710 grade BWP plywood, laminated with 1mm thick mica (633SUD Sunset beech- greenlam), edges treated with 2mm thick pvc edge band 655P (REHAU)



SECTION AA



ELEVATION



PLAN
BOOK SHELF

PROPOSED INTERIOR DESIGN OF THE CENTRAL LIBRARY AT SECOND FLOOR & THIRD FLOOR OF ADMINISTRATIVE COMPLEX IN IISER THIRUVANANTHAPURAM

Notes:
 1. This drawing is the sole property of m/s p.c.rasheed and associates. the rights of reproduction, modification or alteration are reserved by the consultant.
 2. This drawing is not to be used for any other purpose or any other project.
 3. All dimensions are to be scaled out from the drawing. Squared dimensions should be followed.
 4. Check all measurements and levels before commencing the work. Inform the consultant before starting the construction.

REMARKS:
 1. Dimensions are in Meters
 2. Do not scale out the drawing
 3. Columns, Beams sizes as per structural details
 4. Latelite for masonry is 20cm thick, unfinished size (The size shown in the drawing)
 5. Plastering thickness 1.5cm (Unless specified)

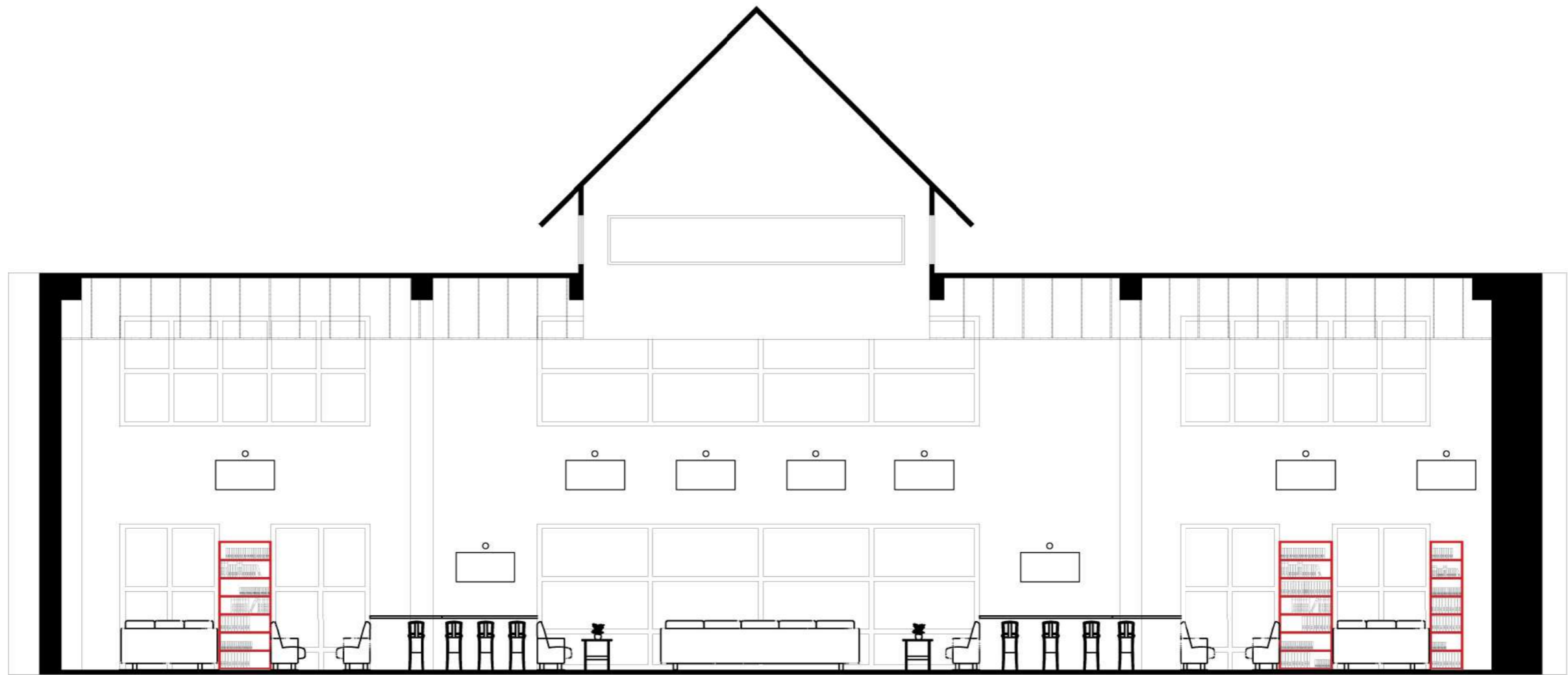
Consultant:
P.C. RASHEED AND ASSOCIATES.
 08210888304 08210888304
 Harshar, Topal, Kanchibana, Enayakottam P.O.,
 Chittoor-517105- Andhra
 Email: pcrasheedandassociates@gmail.com
 pcrasheedandassociates@gmail.com
 Web: 91 9959566641, 91 9957646181

CHEF CONSULTANT:
Er P.C.ABDUL RASHEED B-Tech,FIIISLA,FIIV.
 REGISTERED ENGINEER-A
 REGN NO CI-3140/2000/69/EA

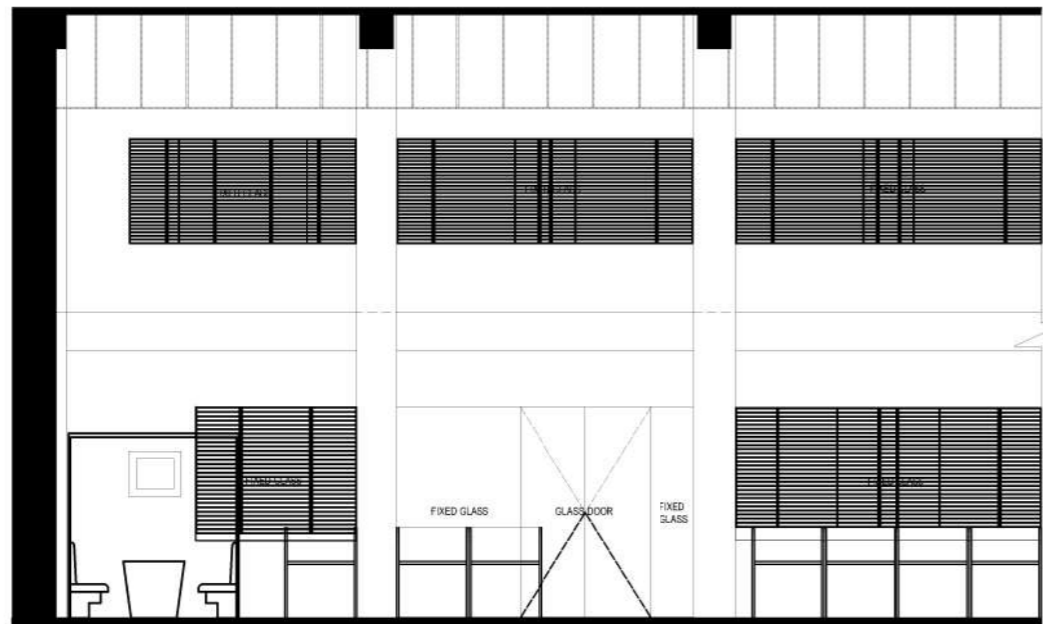
Drawn By:
 Ar. Navaj Muhammed
 Ar. Ridha k
 Er.Treetha T
 Er.Noufan VP
CLIENT:
 IISER Thiruvananthapuram

TITLE: LINEAR BOOKSHELF 2
Scale: 1:100
Date: 29/01/2026

DWG NO.
EDR
21



ELEVATION A



ELEVATION B



ELEVATION C

PROPOSED INTERIOR DESIGN OF THE CENTRAL LIBRARY AT SECOND FLOOR & THIRD FLOOR OF ADMINISTRATIVE COMPLEX IN IISER THIRUVANANTHAPURAM

Notes:
 1. This drawing is the sole property of m/s p.c.rasheed and associates. The rights of reproduction, modification or alteration are reserved by the consultant.
 2. This drawing is not to be used for any other purpose or any other project.
 3. No dimensions are to be scaled out from the drawing. Squared dimensions should be followed.
 4. Check all measurements and levels before commencing the work. Inform the consultant before starting the construction.

REMARKS:
 1. Dimensions are in Meters
 2. Do not scale out the drawing
 3. Columns, Beams sizes as per structural details
 4. Latente for masonry is 20cm thick, unfinished size (The size shown in the drawing)
 5. Plastering thickness 1.5cm (Unless specified)

Consultant:
P.C. RASHEED AND ASSOCIATES.
 202 B STREET, 3RD FLOOR, ENNAYAKKONTHI, KOLLAM-686001, KERALA
 TEL: 0476-2531058, 2531059
 EMAIL: pcrasheedandassociates@gmail.com
 pcrasheedandassociates@gmail.com
 MOBILE: 9745958664, 9745958665

CHEF CONSULTANT:
Er P.C.ABDUL RASHEED B-Tech,FIJISLA,FIIV
 REGISTERED ENGINEER-A
 REGN NO CI-3140/2000/69/EA

Drawn By:
 Ar. Navaf Muhammed
 Ar. Ridha k
 Er.Treetha T
 Er.Noufan VP
CLIENT:
 IISER Thiruvananthapuram

TITLE: ELEVATION A, B, C
Scale: 1:100
Date: 29/01/2026

DWG NO.
EDR
22